

1panel 面板

V4.0 版本 操作指南

西安金箍棒信息技术服务有限公司

西安市碑林区雁塔北路 67 号红锋商务大厦 4 层

目录

一、商品说明	1
1、版本说明	1
2、安全加固	1
二、操作指南	1
1、lpanel 面板信息	1
2、安全组开放相应的 TCP 端口 20453	2
3、登录 lpanel 面板	2
4、lpanel 面板更新	3
5、lpanel 面板命令行操作	4
6、lpanel 配置信息	8
7、常规错误如何排查	9
8、lpanel 官方链接信息	10
9、教学视频	10
三、技术支持	11
1、售后服务	11
2、服务范围	11

一、商品说明

1、版本说明

此镜像为 lpanel 面板镜像，系统：Aliyun（兼容 CentOS），更新时间 2024 年 8 月。您可以一键快速搭建自己的 lpanel 面板服务器。

2、安全加固

为进一步提升云服务的安全性，我公司对镜像产品实施了全面的安全加固，共计完成 88 项基线加固措施。这些精细化的安全改进，不仅确保我们的镜像产品严格符合等保 2.0 的安全标准，更在防御外部攻击、内部漏洞修复、数据加密保护等多个安全维度上实现了显著增强，为您的数据的安全存储与业务的平稳运行提供坚实保障。选择我们的镜像产品，意味着您将获得一个经过深度安全加固、符合高标准安全要求的云端解决方案，让您的业务在安全的护航下稳健运行。

如您的业务环境有其他安全需求，请与客服联系，我们可为您提供一对一定制服务。

二、操作指南

1、lpanel 面板信息

包含三部分，公网 IP 地址、用户名、密码。

外网地址：[http://公网 IP:20453/eecl1a3729a](http://公网IP:20453/eecl1a3729a)

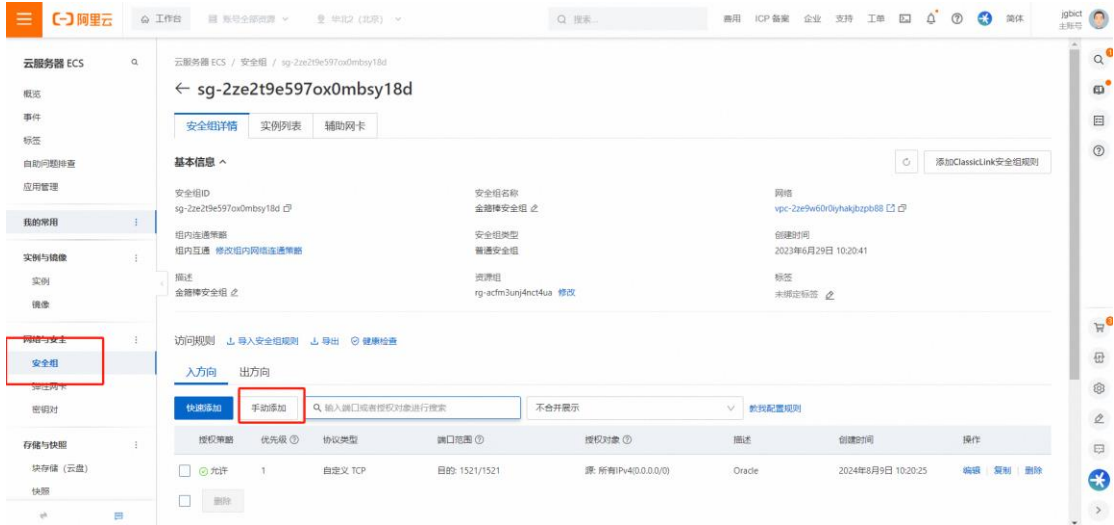
面板用户：5f5d8d62a1

面板密码：ee6c69cf10

```
[lPanel Log]: 请用浏览器访问面板:  
[lPanel Log]: 外网地址: http://公网IP:20453/eecl1a3729a  
[lPanel Log]: 面板用户: 5f5d8d62a1  
[lPanel Log]: 面板密码: ee6c69cf10
```

2、安全组开放相应的 TCP 端口 20453

点击阿里云 ecs，点击安全组，入方向，手动添加



允许 TCP、端口 20453、允许所有 IPv4, 保存即可。

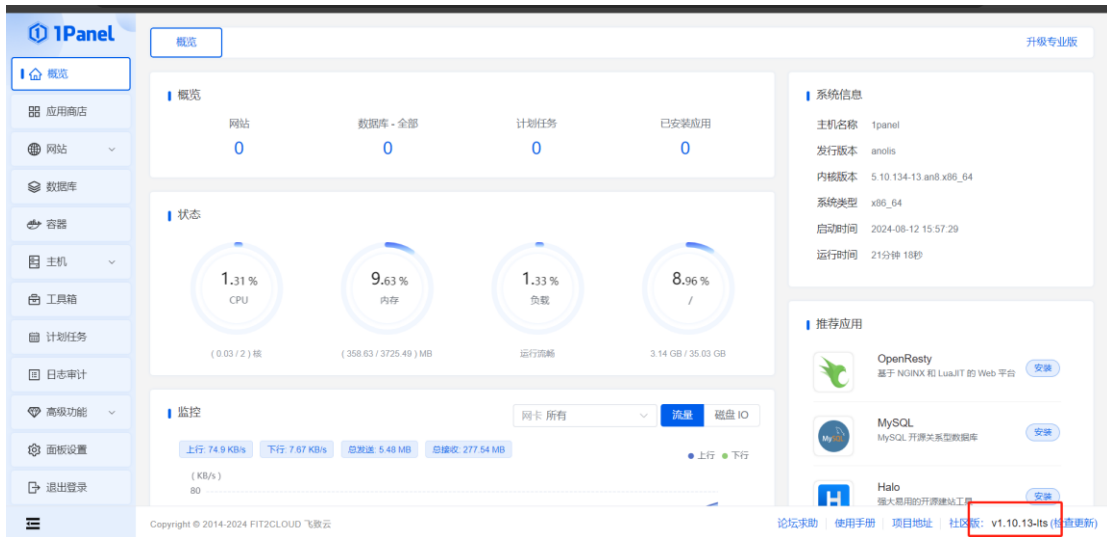


3、登录 lpanel 面板

打开浏览器，输入链接地址，以及账户名、密码。

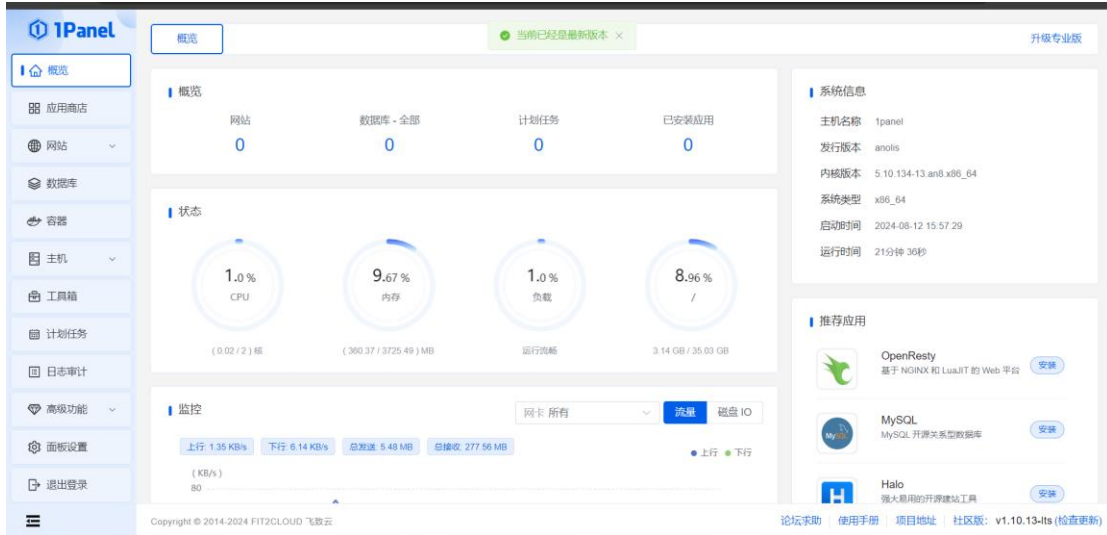


面板版本为 v1.10.13-its



4、1panel 面板更新

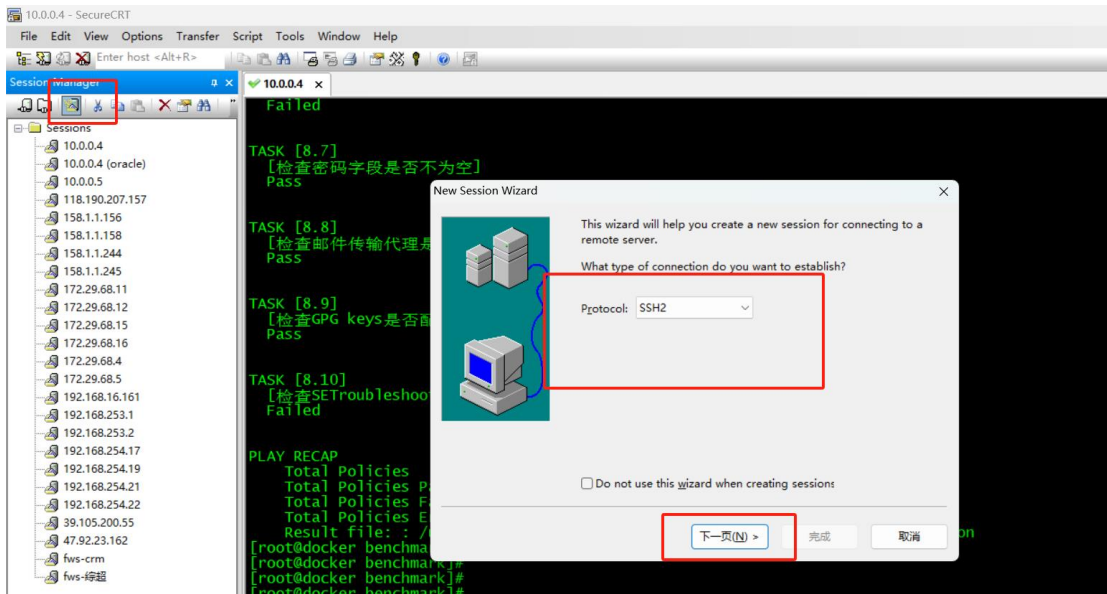
点击检查更新，面板版本为 v1.10.13-its 已经为目前最新版。

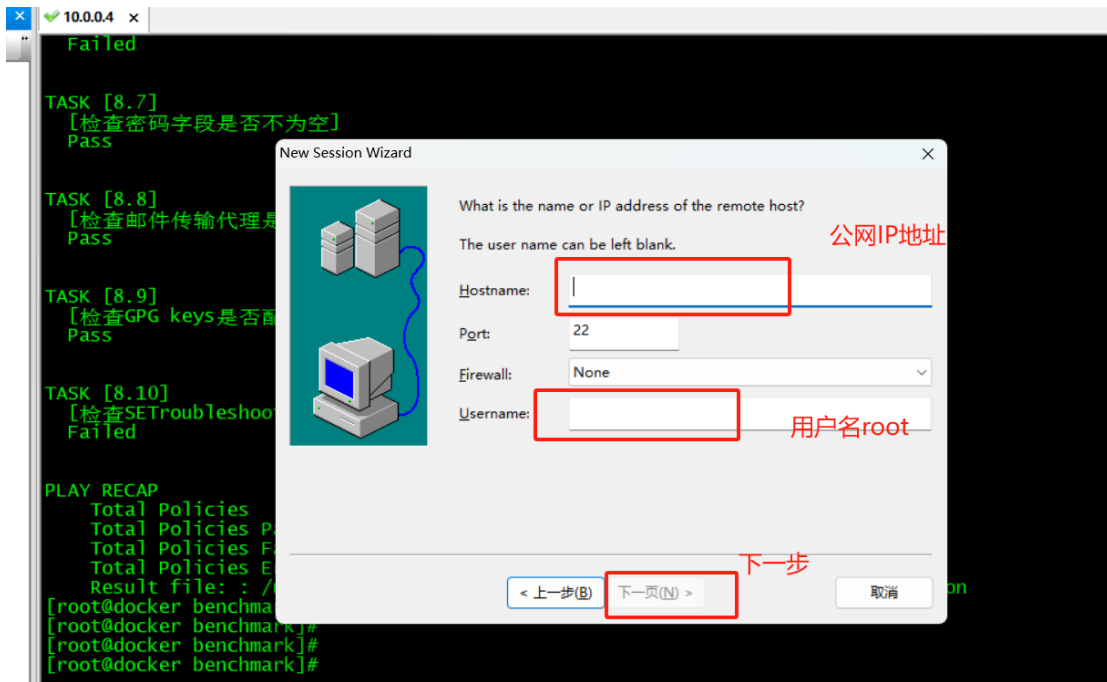


5、1panel 面板命令行操作

使用 (Crt、putty、xshell 等远程工具进行链接)。

选择 ssh 协议、输入公网地址以及账户名密码，进行远程链接。





双击链接即可

执行如下命令

```
[root@lpanel ~]# lpctl --help
lPanel 控制脚本
Commands:
  status          查看 lPanel 服务运行状态
  start           启动 lPanel 服务
  stop            停止 lPanel 服务
  restart         重启 lPanel 服务
  uninstall       卸载 lPanel 服务
  user-info       获取 lPanel 用户信息
  listen-ip       切换 lPanel 监听 IP
  version         查看 lPanel 版本信息
  update          修改 lPanel 系统信息
  reset           重置 lPanel 系统信息
  restore         恢复 lPanel 服务及数据
```

```
[root@lpanel ~]# [root@lpanel ~]# lpctl --help
lPanel 控制脚本

Usage:
./lpctl [COMMAND] [ARGS...]
./lpctl --help

Commands:
status          查看 lPanel 服务运行状态
start          启动 lPanel 服务
stop           停止 lPanel 服务
restart        重启 lPanel 服务
uninstall      卸载 lPanel 服务
user-info      获取 lPanel 用户信息
listen-ip      切换 lPanel 监听 IP
version        查看 lPanel 版本信息
update         修改 lPanel 系统信息
reset          重置 lPanel 系统信息
restore        恢复 lPanel 服务及数据
[root@lpanel ~]#
```

查看 lPanel 服务运行状态

lpctl status

```
[root@lpanel ~]# lpctl status
● lpanel.service - lPanel, a modern open source linux panel
   Loaded: loaded (/etc/systemd/system/lpanel.service; enabled; vendor preset: disabled)
   Active: active (running) since Mon 2024-08-12 16:16:08 CST; 4min 18s ago
     Main PID: 19035 (lpanel)
       Tasks: 5 (limit: 23588)
      Memory: 129.9M
     CGroup: /system.slice/lpanel.service
             └─19035 /usr/bin/lpanel

 8月 12 16:18:44 lpanel lpanel[19035]: [GIN] 2024/08/12 - 16:18:44 | 200 | 19.317836ms | 10.0.0.112 | GET | "/api/8
 8月 12 16:18:44 lpanel lpanel[19035]: [GIN] 2024/08/12 - 16:18:44 | 200 | 194.500796ms | 10.0.0.112 | GET | "/api/8
 8月 12 16:18:44 lpanel lpanel[19035]: [GIN] 2024/08/12 - 16:18:44 | 200 | 18.676022ms | 10.0.0.112 | POST | "/api/8
 8月 12 16:18:47 lpanel lpanel[19035]: [GIN] 2024/08/12 - 16:18:47 | 200 | 7.259068ms | 10.0.0.112 | GET | "/api/8
 8月 12 16:18:56 lpanel lpanel[19035]: [GIN] 2024/08/12 - 16:18:56 | 200 | 11.995442ms | 10.0.0.112 | GET | "/api/8
 8月 12 16:19:02 lpanel lpanel[19035]: [GIN] 2024/08/12 - 16:19:02 | 200 | 8.53831ms | 10.0.0.112 | GET | "/api/8
 8月 12 16:19:04 lpanel lpanel[19035]: [GIN] 2024/08/12 - 16:19:04 | 200 | 173.181518ms | 10.0.0.112 | GET | "/api/8
 8月 12 16:19:05 lpanel lpanel[19035]: [GIN] 2024/08/12 - 16:19:05 | 200 | 21.290218ms | 10.0.0.112 | GET | "/api/8
 8月 12 16:19:20 lpanel lpanel[19035]: [GIN] 2024/08/12 - 16:19:20 | 200 | 7.026959ms | 10.0.0.112 | GET | "/api/8
 8月 12 16:19:26 lpanel lpanel[19035]: [GIN] 2024/08/12 - 16:19:26 | 200 | 8.967093ms | 10.0.0.112 | GET | "/api/8
lines 1-19/19 (END)
```

启动 lPanel 服务

lpctl start

```
[root@lpanel ~]# [root@lpanel ~]# lpctl start
● lpanel.service - lPanel, a modern open source linux panel
   Loaded: loaded (/etc/systemd/system/lpanel.service; enabled; vendor preset: disabled)
   Active: active (running) since Mon 2024-08-12 16:21:11 CST; 7ms ago
     Main PID: 19318 (lpanel)
       Tasks: 1 (limit: 23588)
      Memory: 2.2M
     CGroup: /system.slice/lpanel.service
             └─19318 /usr/bin/lpanel

 8月 12 16:21:11 lpanel systemd[1]: Started lPanel, a modern open source linux panel.
[root@lpanel ~]#
```

停止 lPanel 服务

lpctl stop


```
[root@lpanel ~]# lpanel stop
● lpanel.service - lPanel, a modern open source linux panel
   Loaded: loaded (/etc/systemd/system/lpanel.service; enabled; vendor preset: disabled)
   Active: inactive (dead) since Mon 2024-08-12 16:20:54 CST; 8ms ago
   Process: 19035 ExecStart=/usr/bin/lpanel (code=killed, signal=TERM)
   Main PID: 19035 (code=killed, signal=TERM)

8月 12 16:18:47 lpanel lpanel[19035]: [GIN] 2024/08/12 - 16:18:47 | 200 | 7.259068ms | 10.0.0.112 | GET | "/api/"
8月 12 16:18:56 lpanel lpanel[19035]: [GIN] 2024/08/12 - 16:18:56 | 200 | 11.995442ms | 10.0.0.112 | GET | "/api/"
8月 12 16:19:02 lpanel lpanel[19035]: [GIN] 2024/08/12 - 16:19:02 | 200 | 8.53831ms | 10.0.0.112 | GET | "/api/"
8月 12 16:19:04 lpanel lpanel[19035]: [GIN] 2024/08/12 - 16:19:04 | 200 | 173.181518ms | 10.0.0.112 | GET | "/api/"
8月 12 16:19:05 lpanel lpanel[19035]: [GIN] 2024/08/12 - 16:19:05 | 200 | 21.290218ms | 10.0.0.112 | GET | "/api/"
8月 12 16:19:20 lpanel lpanel[19035]: [GIN] 2024/08/12 - 16:19:20 | 200 | 7.026959ms | 10.0.0.112 | GET | "/api/"
8月 12 16:19:26 lpanel lpanel[19035]: [GIN] 2024/08/12 - 16:19:26 | 200 | 8.967093ms | 10.0.0.112 | GET | "/api/"
8月 12 16:20:54 lpanel systemd[1]: Stopping lPanel, a modern open source linux panel...
8月 12 16:20:54 lpanel systemd[1]: lpanel.service: Succeeded.
8月 12 16:20:54 lpanel systemd[1]: Stopped lPanel, a modern open source linux panel.
```

重启 lPanel 服务

lpanel restart

```
[root@lpanel ~]# lpanel restart
● lpanel.service - lPanel, a modern open source linux panel
   Loaded: loaded (/etc/systemd/system/lpanel.service; enabled; vendor preset: disabled)
   Active: active (running) since Mon 2024-08-12 16:21:31 CST; 9ms ago
   Main PID: 19360 (lpanel)
   Tasks: 4 (limit: 23588)
   Memory: 6.8M
   CGroup: /system.slice/lpanel.service
           └─19360 /usr/bin/lpanel

8月 12 16:21:31 lpanel systemd[1]: Stopped lPanel, a modern open source linux panel.
8月 12 16:21:31 lpanel systemd[1]: Started lPanel, a modern open source linux panel.
```

获取 lPanel 用户信息

lpanel user-info

```
[root@lpanel ~]# lpanel user-info
面板地址: http://$LOCAL_IP:20453/eec1a3729a
面板用户: 5f5d8d62a1
面板密码: ****
提示: 修改密码可执行命令: lpanel update password
```

查看 lPanel 版本信息

lpanel version

```
[root@lpanel ~]# lpanel version
lpanel version: v1.10.13-lts
mode: stable
[root@lpanel ~]#
```

修改 lPanel 系统信息

lpanel update

```
[root@lpanel ~]#
[root@lpanel ~]# lpctl update
修改面板信息

Usage:
  lpctl update [command]

Available Commands:
  password  修改面板密码
  port      修改面板端口
  username  修改面板用户

Flags:
  -h, --help  help for update

Use "lpctl update [command] --help" for more information about a command.
[root@lpanel ~]#
```

更新用户

```
lpctl update username
```

更新密码

```
lpctl update password
```

更新端口

```
lpctl update port
```

6、lpanel 配置信息

软件安装位置/opt/lpanel

```
[root@lpanel lpanel]#
[root@lpanel lpanel]# ll
总用量 0
drwxr-xr-x 2 root root  6 8月 12 16:16 apps
drwxr-xr-x 2 root root  6 8月 12 16:16 backup
drwx----- 2 root root 104 8月 12 16:21 cache
drwxr-xr-x 3 root root  96 8月 12 16:22 db
drwxr-xr-x 3 root root  21 8月 12 16:16 docker
drwx----- 3 root root  35 8月 12 16:16 log
drwxr-xr-x 3 root root  37 8月 12 16:21 resource
drwxr-xr-x 2 root root  6 8月 12 16:16 runtime
[root@lpanel lpanel]# pwd
/opt/lpanel
[root@lpanel lpanel]#
```

执行文件位置/usr/bin/lpctl

```
[root@lpanel ~]#
[root@lpanel ~]#
[root@lpanel ~]# whereis lpctl
lpctl: /usr/bin/lpctl /usr/local/bin/lpctl
[root@lpanel ~]#
```

日志文件位置/ opt/lpanel/log

```
[root@lpanel] log]# pwd
/opt/lpanel/log
[root@lpanel] log]#
[root@lpanel] log]#
[root@lpanel] log]# tail -100f lpanel.log
2024-08-12 16:16:08 [INFO] init logger successfully
2024-08-12 16:16:08 [INFO] init monitor db successfully
2024-08-12 16:16:08 [INFO] init db successfully
2024-08-12 16:16:08 [INFO] Migration run successfully
2024-08-12 16:16:09 [INFO] init cache successfully
2024-08-12 16:16:09 [INFO] init session successfully
2024-08-12 16:16:10 [DEBUG] synchronize system time with [pool.ntp.org] successfull
2024-08-12 16:16:13 [INFO] [xpack] init db successfully
2024-08-12 16:16:13 [INFO] [xpack] migration run successfully
2024-08-12 16:16:13 [ERROR] init waf error openresty not found
2024-08-12 16:16:13 [INFO] listen at http://0.0.0.0:20453 [tcp4]
2024-08-12 16:16:13 [INFO] Starting synchronization with App Store...
2024-08-12 16:16:13 [INFO] [AppStore] download file from https://apps-assets.fit2cloud.com/stable/lpanel.json.zip
2024-08-12 16:16:13 [INFO] Starting synchronization of application details...
2024-08-12 16:16:15 [INFO] Synchronization of application details Success
2024-08-12 16:16:15 [INFO] Synchronization with the App Store was successful!
2024-08-12 16:21:11 [INFO] init logger successfully
2024-08-12 16:21:11 [INFO] init monitor db successfully
2024-08-12 16:21:11 [INFO] init db successfully
2024-08-12 16:21:11 [INFO] Migration run successfully
2024-08-12 16:21:12 [INFO] init cache successfully
```

7、常规错误如何排查

首先重启 lpanel 是否正常，重启 lpanel 服务

lpanel restart

```
[root@lpanel] ~]# lpanel restart
● lpanel.service - lpanel, a modern open source linux panel
   Loaded: loaded (/etc/systemd/system/lpanel.service; enabled; vendor preset: disabled)
   Active: active (running) since Mon 2024-08-12 16:21:31 CST; 9ms ago
   Main PID: 19360 (lpanel)
     Tasks: 4 (limit: 23588)
    Memory: 6.8M
   CGroup: /system.slice/lpanel.service
           └─19360 /usr/bin/lpanel

8月 12 16:21:31 lpanel systemd[1]: Stopped lpanel, a modern open source linux panel.
8月 12 16:21:31 lpanel systemd[1]: Started lpanel, a modern open source linux panel.
```

查看 lpanel 服务运行状态

lpanel status

```
[root@lpanel] ~]# lpanel status
● lpanel.service - lpanel, a modern open source linux panel
   Loaded: loaded (/etc/systemd/system/lpanel.service; enabled; vendor preset: disabled)
   Active: active (running) since Mon 2024-08-12 16:16:08 CST; 4min 18s ago
   Main PID: 19035 (lpanel)
     Tasks: 5 (limit: 23588)
    Memory: 129.9M
   CGroup: /system.slice/lpanel.service
           └─19035 /usr/bin/lpanel

8月 12 16:18:44 lpanel lpanel[19035]: [GIN] 2024/08/12 - 16:18:44 | 200 | 19.317836ms | 10.0.0.112 | GET | "/api/v1/..."
8月 12 16:18:44 lpanel lpanel[19035]: [GIN] 2024/08/12 - 16:18:44 | 200 | 194.500796ms | 10.0.0.112 | GET | "/api/v1/..."
8月 12 16:18:44 lpanel lpanel[19035]: [GIN] 2024/08/12 - 16:18:44 | 200 | 18.676022ms | 10.0.0.112 | POST | "/api/v1/..."
8月 12 16:18:47 lpanel lpanel[19035]: [GIN] 2024/08/12 - 16:18:47 | 200 | 7.259068ms | 10.0.0.112 | GET | "/api/v1/..."
8月 12 16:18:56 lpanel lpanel[19035]: [GIN] 2024/08/12 - 16:18:56 | 200 | 11.995442ms | 10.0.0.112 | GET | "/api/v1/..."
8月 12 16:19:02 lpanel lpanel[19035]: [GIN] 2024/08/12 - 16:19:02 | 200 | 8.53831ms | 10.0.0.112 | GET | "/api/v1/..."
8月 12 16:19:04 lpanel lpanel[19035]: [GIN] 2024/08/12 - 16:19:04 | 200 | 173.181518ms | 10.0.0.112 | GET | "/api/v1/..."
8月 12 16:19:05 lpanel lpanel[19035]: [GIN] 2024/08/12 - 16:19:05 | 200 | 21.290218ms | 10.0.0.112 | GET | "/api/v1/..."
8月 12 16:19:20 lpanel lpanel[19035]: [GIN] 2024/08/12 - 16:19:20 | 200 | 7.026959ms | 10.0.0.112 | GET | "/api/v1/..."
8月 12 16:19:26 lpanel lpanel[19035]: [GIN] 2024/08/12 - 16:19:26 | 200 | 8.967093ms | 10.0.0.112 | GET | "/api/v1/..."
lines 1-197/19 (END)
```

查看运行日志是否有错误日志文件位置

cd /opt/lpanel/log

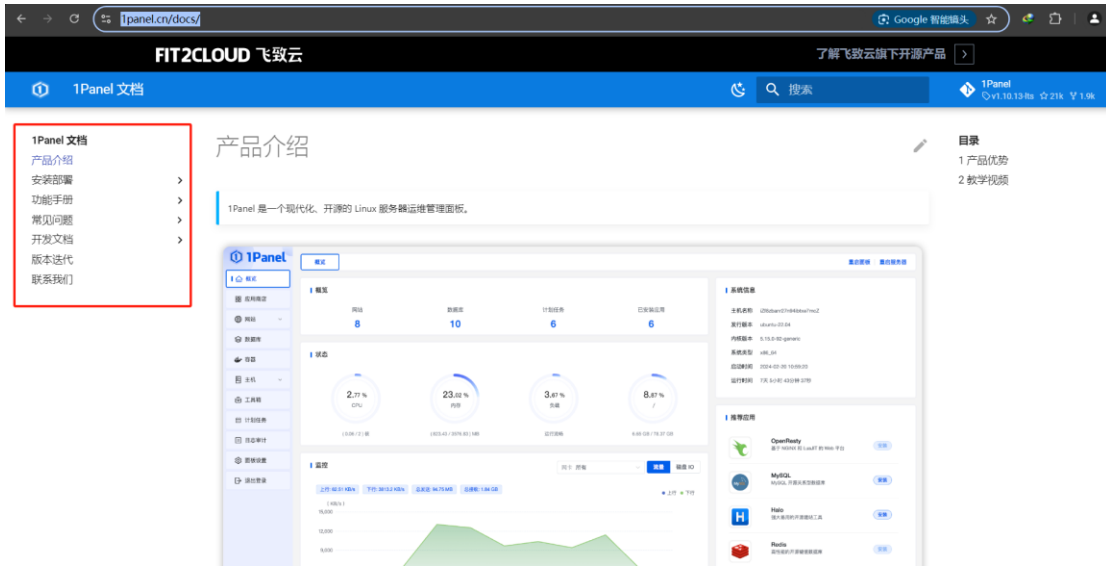
tail -f lpanel.log

```
[root@lpanel log]# pwd
/opt/lpanel/log
[root@lpanel log]#
[root@lpanel log]#
[root@lpanel log]# tail -100f 1Panel.log
2024-08-12 16:16:08 [INFO] init logger successfully
2024-08-12 16:16:08 [INFO] init monitor db successfully
2024-08-12 16:16:08 [INFO] init db successfully
2024-08-12 16:16:08 [INFO] Migration run successfully
2024-08-12 16:16:09 [INFO] init cache successfully
2024-08-12 16:16:09 [INFO] init session successfully
2024-08-12 16:16:10 [DEBUG] synchronize system time with [pool.ntp.org] successful!
2024-08-12 16:16:13 [INFO] [xpack] init db successfully
2024-08-12 16:16:13 [INFO] [xpack] migration run successfully
2024-08-12 16:16:13 [ERROR] init waf error openresty not found
2024-08-12 16:16:13 [INFO] listen at http://0.0.0.0:20453 [tcp4]
2024-08-12 16:16:13 [INFO] Starting synchronization with App Store...
2024-08-12 16:16:13 [INFO] [AppStore] download file from https://apps-assets.fit2cloud.com/stable/lpanel.json.zip
2024-08-12 16:16:13 [INFO] Starting synchronization of application details...
2024-08-12 16:16:15 [INFO] Synchronization of application details Success
2024-08-12 16:16:15 [INFO] Synchronization with the App Store was successful!
2024-08-12 16:21:11 [INFO] init logger successfully
2024-08-12 16:21:11 [INFO] init monitor db successfully
2024-08-12 16:21:11 [INFO] init db successfully
2024-08-12 16:21:11 [INFO] Migration run successfully
2024-08-12 16:21:12 [INFO] init cache successfully
```

8、lpanel 官方链接信息

<https://lpanel.cn/docs/>

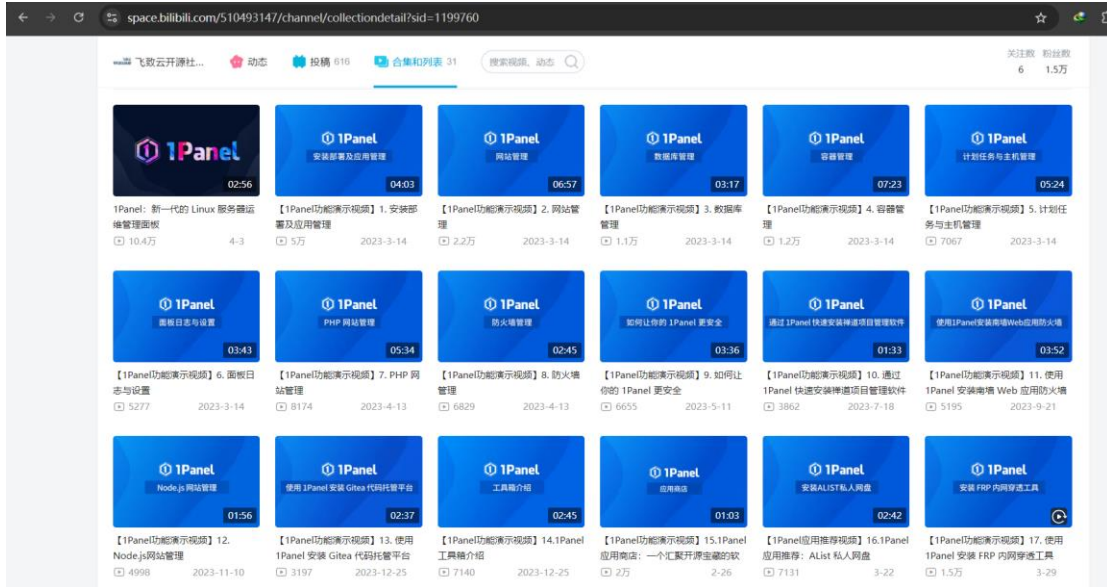
浏览器输入链接信息，查看官方手册（产品介绍、安装部署、功能手册、常见问题、开发文档、版本迭代等）。



9、教学视频

详细进阶可以观看相关的教学视频。

<https://space.bilibili.com/510493147/channel/collectiondetail?sid=1199760>



三、技术支持

1、售后服务

- (1) 您可以第一时间在阿里云市场联系售后获取服务。
- (2) 服务时间：09:00-18:00（紧急情况请打电话）
- (3) 服务热线：18091296777、4009030002 转 15953
- (4) 服务邮箱：22958288@qq.com

2、服务范围

远程支持：如果您在使用过程中遇到技术操作问题，请及时联系客服，我们的工程师可远程协助您完成操作。

定制服务：本公司支持一对一定制服务，如您的业务环境有特殊需求，请与客服联系。

付费服务：本公司可提供镜像部署、故障处理、安全运维代维等一站式托管服务，全面涵盖服务器环境配置，网站程序调试，数据库配置更改，数据库权限、账户，系统安全加固，故障排查，系统调优，数据库优化等范围。如您有相关需求，请咨询客服。