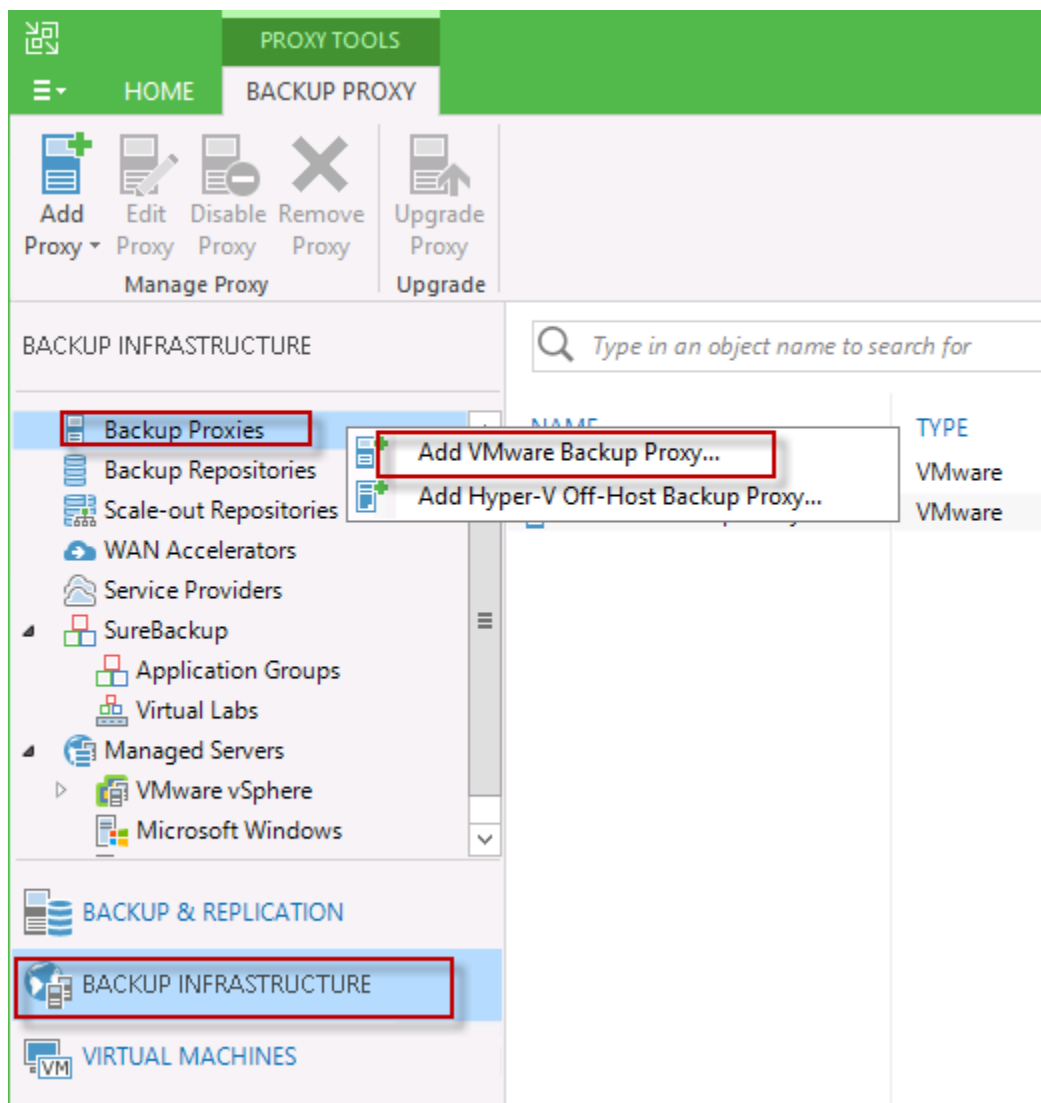


Veeam 推送 proxy 和 repository 步骤

推送 proxy:

Proxy 必须是 windows, 而 repository 可以是 windows 或 linux.



New VMware Proxy

Server
Choose server for new backup proxy. You can only select between Microsoft Windows servers added to the managed servers which are not proxies already.

Server
Traffic Rules
Summary

Choose server:
vserver20.vclass.local Add New...

Proxy description:
Created by VCLASS\Administrator at 2018/3/3 23:12.

Transport mode:
Automatic selection Choose...

Connected datastores:
Automatic detection (recommended) Choose...

Max concurrent tasks:
4 ✓

< Previous **Next >** Finish Cancel

New Windows Server

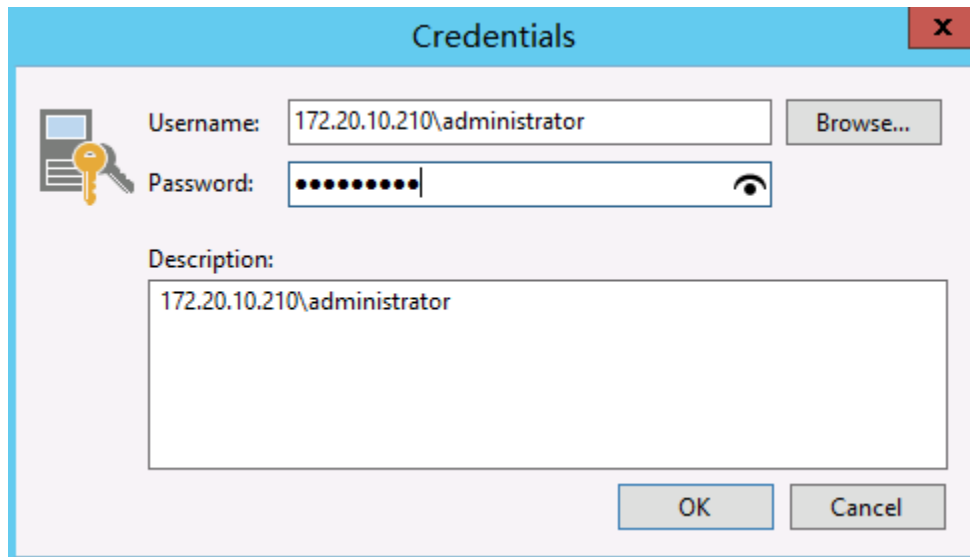
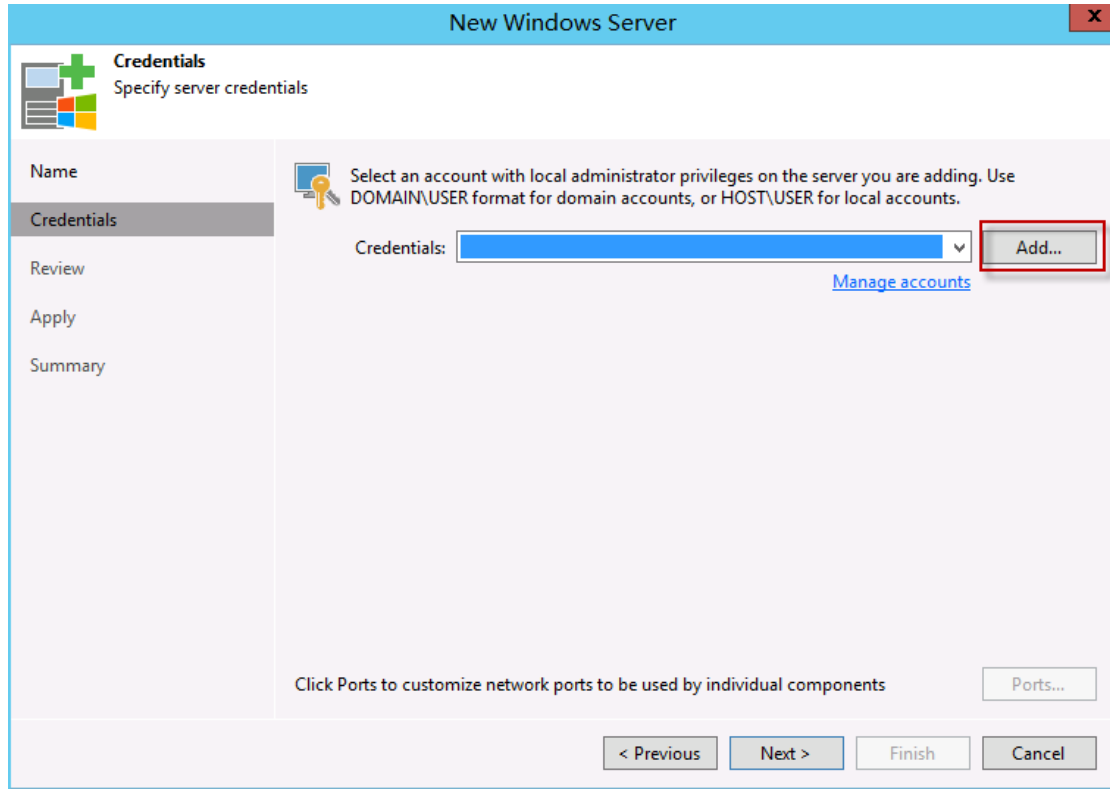
Name
Specify DNS name or IP address of Microsoft Windows server.

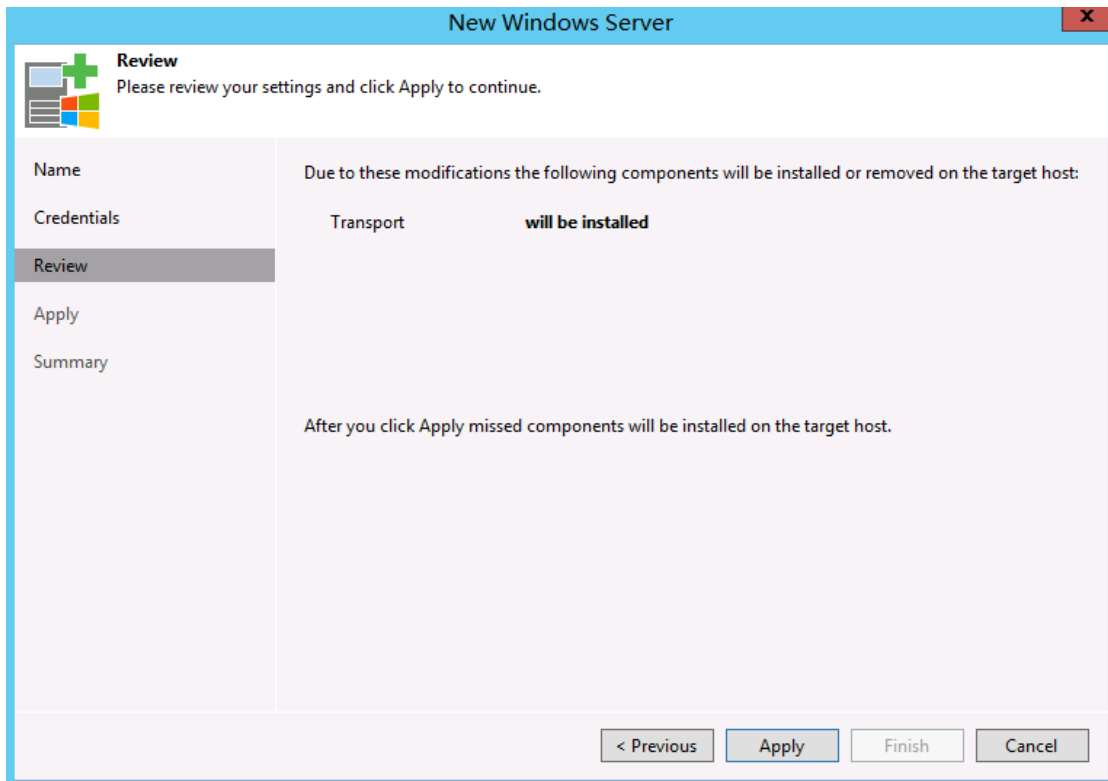
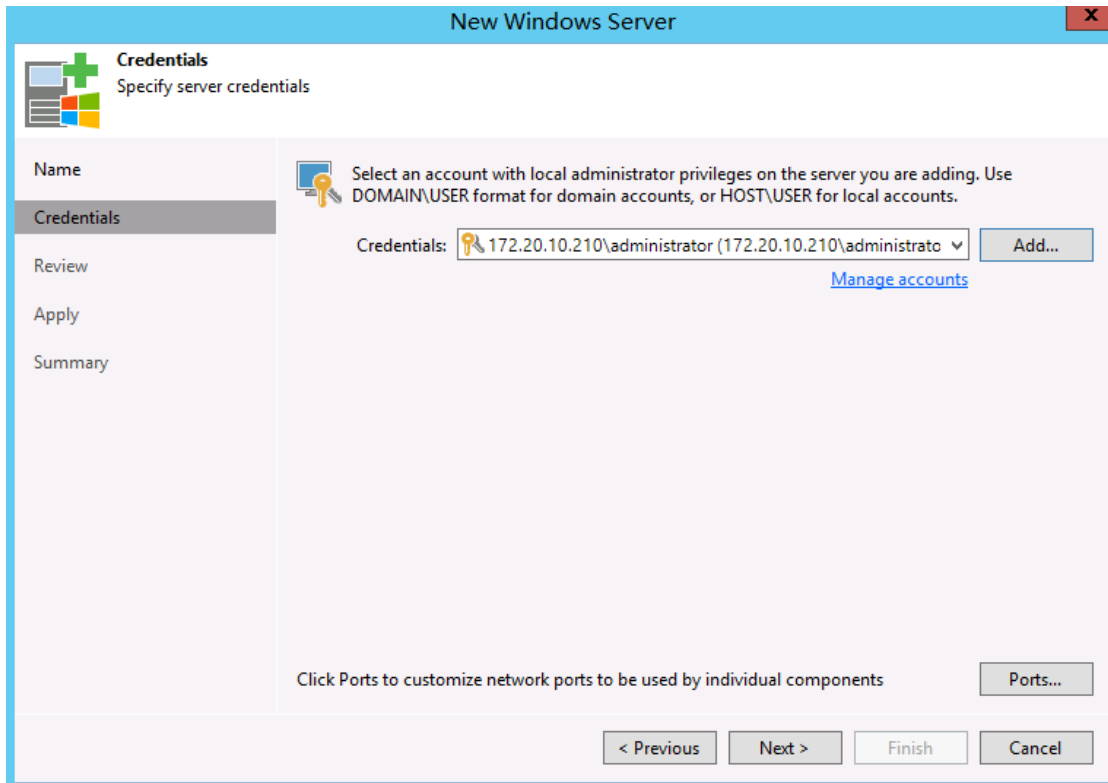
Name
Credentials
Review
Apply
Summary

DNS name or IP address:
172.20.10.210


Description:
Created by VCLASS\Administrator at 2018/3/3 23:12.

< Previous **Next >** Finish Cancel





New Windows Server




Apply

Please wait while required operations are being performed. This may take a few minutes...

	Message	Duration
Credentials	✓ Starting infrastructure item creation job	0:00:02
Review	✓ Collecting hardware info	
Apply	✓ Detecting operating system	
Summary	✓ Detecting OS version	0:00:11
	✓ Creating temporary folder	
	✓ Uploading package VeeamTransport.msi	0:00:02
	✓ Installing package VeeamTransport.msi	0:00:16
	✓ Deleting temporary folder	
	✓ Registering client VSERVER20 for package Transport	
	✓ Discovering installed packages	
	✓ All required packages have been successfully installed	
	✓ Creating database records for server	0:00:23
	✓ Detecting server configuration	
	✓ Creating configuration database records for installed packages	
	✓ Collecting disks and volumes info	0:00:15
	✓ Microsoft Windows server saved successfully	

< Previous Next > Finish Cancel

New Windows Server



Summary

You can copy the configuration information below for future reference.

	Summary:
Name	Microsoft Windows Server '172.20.10.210' was successfully created.
Credentials	OS version: Microsoft Windows Server 2012 R2 Standard 64-bit (6.3.9600 build:9600). User: 172.20.10.210\administrator
Review	Hardware info: Chassis type: Virtual (VMware) Cores count: 2
Apply	Components: Installer using port 6160 Transport using port 6162
Summary	

< Previous Next > Finish Cancel

New VMware Proxy

Server

Choose server for new backup proxy. You can only select between Microsoft Windows servers added to the managed servers which are not proxies already.

X

Server

Traffic Rules

Summary

Choose server:

▼
Add New...

Proxy description:

Created by VCLASS\Administrator at 2018/3/3 23:12.

Transport mode:

Choose...

Connected datastores:

Choose...

Max concurrent tasks:

▲
▼
✔

< Previous
Next >
Finish
Cancel

New VMware Proxy

Traffic Rules

Review network traffic encryption and throttling rules which apply to this backup proxy.

X

Server

Traffic Rules

Summary

Network traffic rules control encryption and throttling of network traffic based on the destination. Throttling is global, with set bandwidth split equally across all backup proxies falling into the rule.

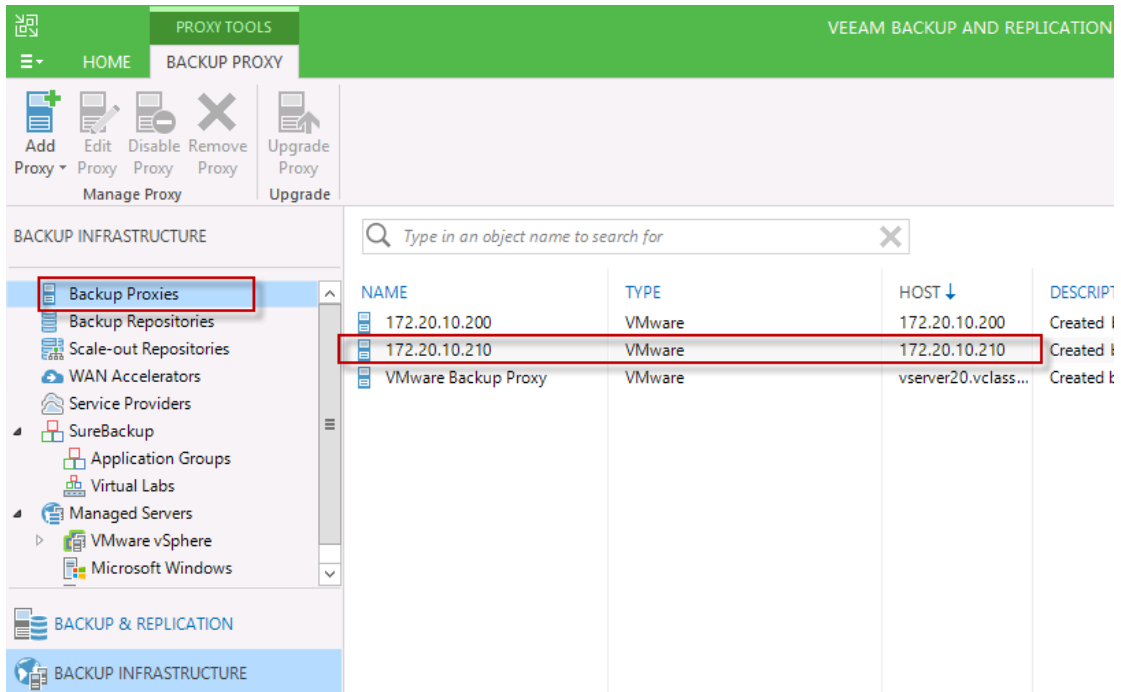
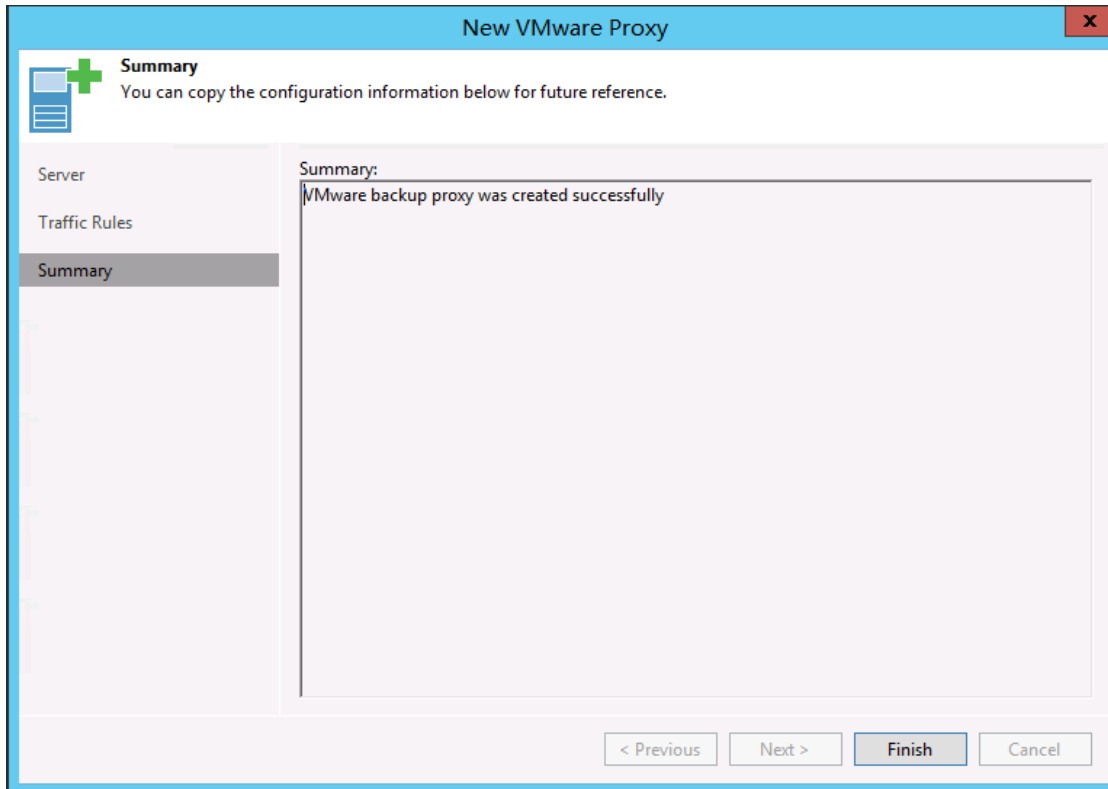
The following network traffic rules apply to this proxy:

Destination IP range	Encryption	Throttling	Time period	

View

[Manage network traffic rules](#)

< Previous
Apply
Finish
Cancel



添加 Repository:

VEEAM BACKUP A

REPOSITORY TOOLS

HOME BACKUP REPOSITORY

Add Repository Manage Repository Edit Repository Remove Repository Proxy Affinity Agents Permissions Rescan Upgrade Tools

BACKUP INFRASTRUCTURE

Backup Proxies Backup Repositories Scale-out Repositories WAN Accelerators Service Providers SureBackup Application Groups Virtual Labs Managed Servers VMware vSphere Microsoft Windows

BACKUP & REPLICATION

NAME ↓ TYPE HOST

NAME ↓	TYPE	HOST
Backup Repository 2	Windows	172.20.10.200
Rescan	Windows	vserver20.vclass...

Type in an object name to search for

Add Backup Repository...

New Backup Repository

Name
Type in a name and description for this backup repository.

Name: Backup Repository 210

Description: Created by VCLASS\Administrator at 2018/3/3 23:22.

Name
Type
Server
Repository
Mount Server
Review
Apply

< Previous Next > Finish Cancel

New Backup Repository

Type
Choose type of backup repository you want to create.

Name

Type

Server

Repository

Mount Server

Review

Apply

- Microsoft Windows server**
Microsoft Windows server with internal or directly attached storage. Data mover process running directly on the server allows for improved backup efficiency, especially over slow links.
- Linux server**
Linux server with internal, directly attached, or mounted NFS storage. Data mover process running directly on the server allows for more efficient backups, especially over slow links.
- Shared folder**
CIFS (SMB) share. When backing up over slow links, we recommend that you specify a gateway server located in the same site with the shared folder.
- Deduplicating storage appliance**
Advanced integration with DELL EMC Data Domain, ExaGrid and HPE StoreOnce. For basic integration, use the Shared folder option above.

< Previous Next > Finish Cancel

New Backup Repository

Server
Choose server backing your repository. You can select server from the list of managed servers added to the console.

Name

Type

Server

Repository

Mount Server

Review

Apply

Repository server:

vserver20.vclass.local (Backup server) Add New...


vserver20.vclass.local (Backup server) Populate

172.20.10.200 (Created by VSERVER20\Administrator at 2018/3/3 14:04.)

172.20.10.210 (Created by VCLASS\Administrator at 2018/3/3 23:12.)

< Previous Next > Finish Cancel

New Backup Repository



Server

Choose server backing your repository. You can select server from the list of managed servers added to the console.

Name

Type

Server

Repository

Mount Server

Review

Apply

Repository server:


172.20.10.210 (Created by VCLASS\Administrator at 2018/3/3 23:12.) Add New...

Path	Capacity	Free

Populate

< Previous Next > Finish Cancel

New Backup Repository



Repository

Type in path to the folder where backup files should be stored, and set repository load control options.

Name

Type

Server

Repository

Mount Server


Review

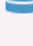
Apply

Location

Path to folder:

Browse...

 Capacity: ... Populate

 Free space: ...

Load control

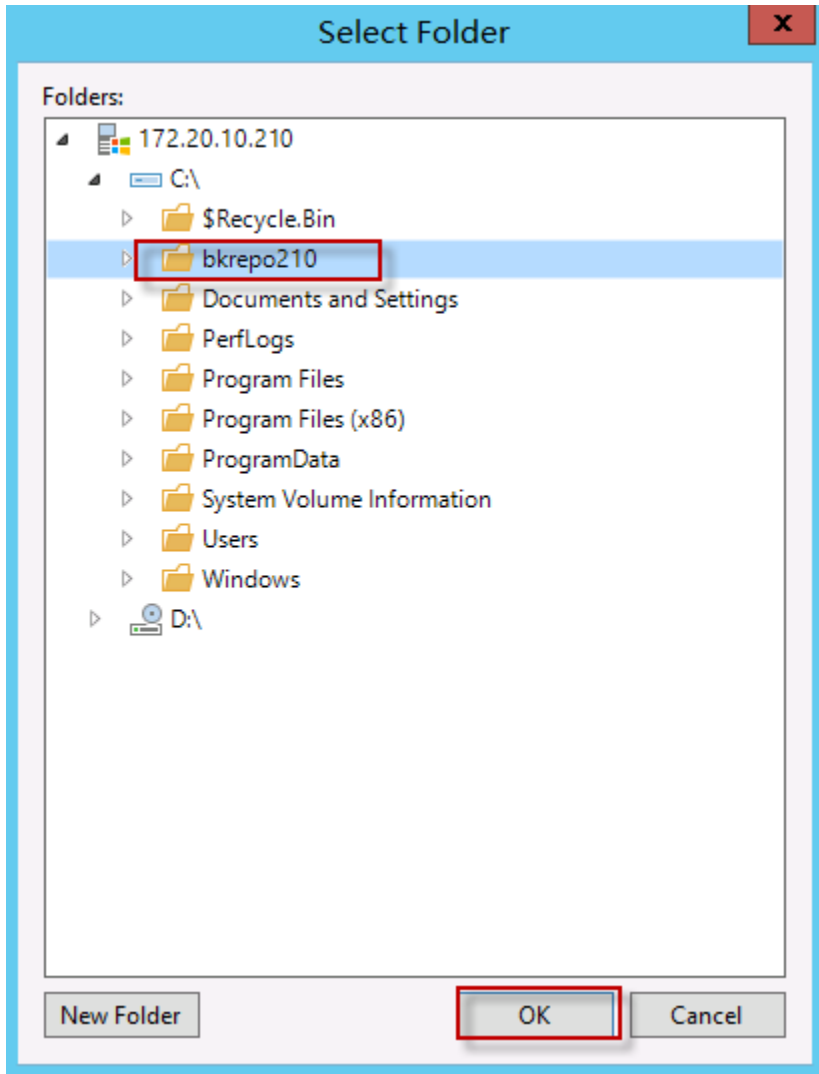
Running too many concurrent tasks against the same repository may reduce overall performance, and cause I/O operations to timeout. Control storage device saturation with the following settings:

Limit maximum concurrent tasks to: ^ v


Limit read and write data rates to: ^ v MB/s

Click Advanced to customize repository settings Advanced...

< Previous Next > Finish Cancel


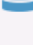


New Backup Repository




Repository

Type in path to the folder where backup files should be stored, and set repository load control options.

<p>Name</p> <p>Type</p> <p>Server</p> <p>Repository</p> <p>Mount Server</p> <p>Review</p> <p>Apply</p>	<p>Location</p> <p>Path to folder: <input type="text" value="C:\bkrepo210"/> Browse...</p> <p> Capacity: 39.7 GB</p> <p> Free space: 30.2 GB Populate</p> <p>Load control</p> <p>Running too many concurrent tasks against the same repository may reduce overall performance, and cause I/O operations to timeout. Control storage device saturation with the following settings:</p> <p><input checked="" type="checkbox"/> Limit maximum concurrent tasks to: <input type="text" value="4"/> ^ v</p> <p><input type="checkbox"/> Limit read and write data rates to: <input type="text"/> ^ v MB/s</p> <p style="text-align: right; margin-top: 20px;">Click Advanced to customize repository settings Advanced...</p>
---------------------------------------------------------------------------------------------------------------	----------------------------------------------------------------------------------------------------------------------------------------------------------------------------------------------------------------------------------------------------------------------------------------------------------------------------------------------------------------------------------------------------------------------------------------------------------------------------------------------------------------------------------------------------------------------------------------------------------------------------------------------------------------------------------------------------------------------------------------------------------------------------------------------------------------------------------------------------------------------------------------------------------------------------------------------------------------------------------------------------------------------------------------------------------------------------------------------------------------------------------------------------------

< Previous
Next >
Finish
Cancel

New Backup Repository



Mount Server

Specify a server to mount backups to for file-level restores. vPower NFS service allows for running virtual machines directly from backup files, enabling advanced functionality such as Instant VM Recovery, SureBackup and On-Demand Sandbox.

<p>Name</p> <p>Type</p> <p>Server</p> <p>Repository</p> <p>Mount Server</p> <p>Review</p> <p>Apply</p>	<p>Mount server: <input type="text" value="172.20.10.210 (Created by VCLASS\Administrator at 2018/3/3 23:12.)"/> v</p> <p><input checked="" type="checkbox"/> Enable vPower NFS service on the mount server (recommended)</p> <p style="font-size: small;">Specify vPower NFS write cache location on the mount server. Make sure the selected volume has enough free disk space available to store changed disk blocks of instantly recovered VMs.</p> <p>Folder: <input type="text" value="%ALLUSERSPROFILE%\Veeam\Backup\NfsDatastore"/> Browse...</p> <p style="text-align: right; margin-top: 20px;">Click Ports to change NFS server and backup mount listener ports Ports...</p>
---------------------------------------------------------------------------------------------------------------	-------------------------------------------------------------------------------------------------------------------------------------------------------------------------------------------------------------------------------------------------------------------------------------------------------------------------------------------------------------------------------------------------------------------------------------------------------------------------------------------------------------------------------------------------------------------------------------------------------------------------------------------------------------------------------------------------------------------------------------------------------------------------------------------------------

< Previous
Next >
Finish
Cancel

New Backup Repository

Review
✕

Review
Please review the settings, and click Apply to continue.

	Backup repository properties:
Name	Repository type: Windows
Type	Mount host: 172.20.10.210
Server	Account: 172.20.10.210\administrator
Repository	Backup folder: C:\bkrepo210
Mount Server	Write throughput: Not limited
	Max parallel tasks: 4

The following components will be processed on server 172.20.10.210:

Transport	already exists
vPower NFS	will be installed
Mount Server	will be installed

Import existing backups automatically
 Import guest file system index

< Previous
Apply
Finish
Cancel

New Backup Repository

Apply
✕

Apply
Please wait while backup repository is created and saved in configuration. This may take a few minutes...

	Message	Duration
Name	✓ Creating temporary folder	
Type	✓ Uploading package NDP452-KB2901907-x86-x64-AllOS-ENU.exe	0:00:02
Server	✓ Installing .NET Framework	0:02:09
Repository	✓ Uploading package vPowerNFS.msi	
Mount Server	✓ Installing package vPowerNFS.msi	0:00:02
Review	✓ Uploading package VeeamMountService.msi	
Apply	✓ Installing package VeeamMountService.msi	0:00:12
	✓ Deleting temporary folder	
	✓ Registering client VSERVER20 for package Transport	
	✓ Registering client VSERVER20 for package vPower NFS	
	✓ Registering client VSERVER20 for package Mount Server	
	✓ Discovering installed packages	
	✓ All required packages have been successfully installed	
	✓ Detecting server configuration	
	✓ Reconfiguring vPower NFS service	0:00:08
	✓ Creating configuration database records for installed packages	
	✓ Creating database records for repository	
	✓ Backup repository has been added successfully	

< Previous
Next >
Finish
Cancel

VEEAM BACKUP AND REPLICATION

REPOSITORY TOOLS

HOME BACKUP REPOSITORY

Add Repository Edit Repository Remove Repository Proxy Affinity Agents Permissions Rescan Upgrade

Manage Repository Repository Settings Tools

BACKUP INFRASTRUCTURE

Backup Proxies

Backup Repositories

Scale-out Repositories

WAN Accelerators

Service Providers

SureBackup

Application Groups

Virtual Labs

Managed Servers

VMware vSphere

Microsoft Windows

BACKUP & REPLICATION

Type in an object name to search for

NAME ↓	TYPE	HOST	PATH
Backup Repository 2	Windows	172.20.10.200	C:\bk-repo
Backup Repository 210	Windows	172.20.10.210	C:\bkrepo210
Default Backup Repository	Windows	vserver20.vclass...	C:\Backup