

Teradici PCoIP Graphics Agent for Windows 22.04

This documentation is intended for administrators who are deploying the Graphics Agent for Windows as part of a Teradici Cloud Access Software deployment. It assumes thorough knowledge of conventions and networking concepts, including firewall configuration.

Although many agent features and settings can be configured using the Windows user interface, some administrative tasks require use of Windows command line tools. Users should be familiar with both *cmd* and *PowerShell*.

About the PCoIP Graphics Agent for Windows

The Graphics Agent for Windows is part of Teradici Cloud Access Software. It enables Teradici customers to deliver GPU-powered physical and virtual workstations to end users via remote clients.

Users include high-end knowledge workers, graphic designers, artists, and CAD/CAM designers.

A deployed Graphics Agent for Windows requires these components:

- **A host machine** which provides the desktop to remote clients. The host can be physical or virtual, in the cloud, or in a data center. See [System Requirements](#) for more information.
- **The Graphics Agent for Windows software** installed on the host machine.
- **A GPU**. The Graphics Agent is compatible with any GPU, but is optimized for NVIDIA GRID-compatible GPUs and AMD Radeon™ GPUs.

The GPU can be dedicated to the workstation, or shared among virtual workstations by a hypervisor. See [System Requirements](#) for more information.

Where to Find Information about Other Components

This guide describes the Graphics Agent for Windows.

For complete information about all of the components used in PCoIP ecosystems, including architectural diagrams and deployment suggestions, see one of the following documents:

Cloud Access Software architectures and descriptions:

- [Teradici All Access Architecture Guide](#)

For more information about PCoIP clients, see one of the following:

- [Teradici PCoIP Software Client 22.04 for Windows Administrators' Guide](#)
- [Teradici PCoIP Software Client 22.04 for macOS Administrators' Guide](#)
- [Teradici PCoIP Software Client for 22.04 Linux Administrators' Guide](#)
- [Tera2 PCoIP Zero Client 22.04 Administrators' Guide](#)

For information about Cloud Access licensing, see our [Licensing FAQ](#). Most PCoIP systems use PCoIP Cloud Licensing. For systems using a local PCoIP License server instead, refer to the following guides:

- [Teradici PCoIP License Server Administrators' Guide for *Online Environments*](#)
- [Teradici PCoIP License Server Administrators' Guide for *Offline Environments*](#)

What's New in This Release

Release 22.04 of the Graphics Agent for Windows includes:

- Introduces **Deskside Mode**, which allows PCoIP connections to physical machines in non-private locations, such as offices, while maintaining privacy by blocking input devices and blanking local screens.
- Adds **multi-channel audio support** when used with PCoIP Software Client for macOS.
- Adds support for **PCoIP Ultra Collaboration** providing the ability to share your PCoIP session with a remote collaborator. See [Feature Support: Collaboration](#) for details.
- Adds Windows 11 support as a technology preview offering for testing and feedback. ***Windows 11 should not be used in production environments.***
- Bug fixes and stability enhancements.

System Requirements

The Graphics Agent for Windows depends on the following system capacities and capabilities:

Compatible Host Instance Types

Environment	Supported instance types
VMware ESXi (6.0+)	VMware Hardware Version 11
KVM (5.0+)	QEMU/KVM
Physical machines	Windows physical machine
AWS EC2	<ul style="list-style-type: none">• G3• G4• G5
Microsoft Azure (Generation 1 VMs)	<ul style="list-style-type: none">• NV-series• NVv3-Series• NVv4-Series
Google Cloud Platform	Any instance with a compatible GPU

Host Instance Requirements

Global instance requirements

Operating Systems

- Windows 10 21H1, 21H2 (64-bit Professional and Enterprise)
- Windows Server 2016, 2019 (single-user only)
- Windows 11 (*Technology preview; not for production use*)

Remote Host Memory

At least **2GB** of RAM is required on the host desktop.
The agent should have at least **512MB** of available memory.

Remote Host GPU Memory

At least 1GB *per 4K UHD display*

Remote Host CPUs

At least 2 CPUs are required on the host desktop.
Processors must support Streaming SIMD Extensions (SSE) 4.2.
To use [PCoIP Ultra](#), processors must support the AVX2 instruction set.

Network Ports

The following ports must be open on the host desktop:

- TCP 443
- TCP 4172
- UDP 4172
- TCP 60443

Collaboration sessions require an open UDP port (default 64172)

Storage

At least 100MB for installation and 100MB for logging are recommended.

Only the listed versions of Windows 10 are supported


The Graphics Agent for Windows is compatible with Windows 10 21H1, 21H2 (64-bit Professional and Enterprise).
Other versions of Windows 10 are not supported.

Compatible GPUs

Supported GPUs

Instance	GPU	Driver	Driver download
VMware ESXi or KVM	GPUs as listed in NVIDIA's GRID release notes .	GRID 14.0 (511.65)+	Download instructions
Physical PC	<ul style="list-style-type: none"> • Tesla (any) • Quadro (2000+) <hr/> Consumer-grade cards: ¹ <ul style="list-style-type: none"> • GeForce RTX 2080 • GeForce RTX 3070 • GeForce RTX 3080 • GeForce GTX 1080 • GeForce GTX 1050 • GeForce GTX 660 • Quadro 2000 • Quadro P650 • Additional cards are expected to work, but have not been tested. 	Use the latest 511.09+ driver for your supported GPU	Download information
AWS EC2 G3	NVIDIA M60	GRID 14.0 (511.65)+	Download instructions
AWS EC2 G4dn	NVIDIA T4	GRID 14.0 (511.65)+	Download instructions
AWS EC2 G4ad	AMD Radeon Pro V520	20.10.25.04	Download instructions

Instance	GPU	Driver	Driver download
Microsoft Azure NV/ NVv3	NVIDIA M60	GRID 13.1 (472.329)+	Download instructions
Microsoft Azure NVv4	AMD Radeon MI25	21.Q2	Download instructions
Google Cloud Platform	NVIDIA P4, P100, T4	GRID 13.1 (472.329)+	Download instructions

 **Note: NVIDIA Tesla cards have license limitations**

Systems using NVIDIA Tesla-based GPUs, including M60, M10, and M6, are subject to licensing restrictions which may further reduce the available number of monitors or their available resolutions. For systems using Tesla-based GPUs, only licensed displays and resolutions will use GRID functionality. For more information, see [NVIDIA's Grid Licensing User Guide](#)

 **Info: Display limitations on Microsoft Azure**

Graphics Agents running on Microsoft Azure may be limited to a single 2560x1600 display, depending on the state of NVIDIA GRID licensing.

1. PCoIP agent machines using these cards require special configuration and have limitations beyond those documented in this guide. For more information and detailed instructions, see [Teradici Cloud Access Software Instructions for Consumer Grade NVIDIA GPUs](#) in the Teradici Knowledge Base. Additional cards will likely work, but have not been tested.

Audio Support

Stereo audio output and mono audio input are supported and enabled by default.

During a session, the host's default audio device is changed to the *Teradici Virtual Audio Driver*. When the session is disconnected, the audio device selection reverts to its previous setting.

Note: Applications must use the system default device

The PCoIP agent delivers audio over PCoIP connections by reassigning the system's default audio device. Only applications that use the system default audio device will send or receive audio over PCoIP.

Note: Volume is set to full when the PCoIP agent is installed

When the PCoIP agent is installed, the system volume is reset to maximum. Test the volume level before use.

Multi-Channel Audio Output

Requirements

- **Agent:** Graphics Agent for Windows, version 22.04 or newer
- **Client:** PCoIP Client for macOS, version 22.01 or newer

Important: macOS Client is required

Multi-channel audio is only supported by the PCoIP Client for macOS.

- **Audio device:** Multi-Channel Audio device that supports 2.0, 5.1 or 7.1 channel configuration (connected to PCoIP Client for macOS)

Current Limitations

- Only 2.0, 5.1, and 7.1 configurations are currently supported.
- Individual speaker volume control is currently only available for 2.0 configurations.

- Multi-channel audio does not work on Avid Media Composer.

Enabling Multi-Channel Audio

To use multi-channel audio in a PCoIP session, the client Mac must be connected to a multi-channel audio device that is set as the system default. When a configured client establishes a PCoIP connection, the Graphics Agent for Windows will automatically detect the multi-channel system.

See the PCoIP Software Client for macOS Administrators' Guide for setup instructions.

Collaboration

Caution: Technology Preview feature

PCoIP Ultra Collaboration is provided as a Technology Preview feature for the Graphics Agent for Windows during development. This means that features may not always work as expected, and behavior or interface elements may change without notice. We welcome your feedback! See our [Technology Preview Program](#) page for more information.

The PCoIP Ultra Collaboration feature enables a PCoIP session user to share their session with a remote guest collaborator using standard PCoIP Soft Clients. While connected the guest collaborator can view the screen output and hear the audio output of the shared PCoIP session.

When discussing this feature, we'll refer to the first user as the *host collaborator*, and the second user who joins the session as the *guest collaborator*.

Requirements

- The Collaboration feature must be hosted on a Graphics Agent for Windows 22.04 or higher, with *Collaboration* and *PCoIP Ultra CPU Offload* enabled.
- Both the host and the guest collaborators must connect using a PCoIP Software Client 22.04 or higher (macOS, Windows, or Linux).
- Both collaborators must connect using PCoIP software clients that support *PCoIP Ultra CPU Offload*.
- Collaboration sessions use a UDP port which must allow inbound traffic, both at the cloud provider network level and the local firewall. **The default collaboration port is UDP 64172**; if necessary, this can be changed. See [Changing the collaboration port](#) for details.
- For *brokered collaboration*, the PCoIP Connection Manager and PCoIP Security Gateway 22.04 or later is required, and:
 - If the brokered connection is via the PCoIP Security Gateway, then *the PCoIP Security Gateway* must be able to connect to the host on the configured collaboration port (UDP 64172 by default).

- If the brokered connection is *not* via a PCoIP Security Gateway, then *the guest collaborator's PCoIP client* must be able to connect to the host on the configured collaboration port (UDP 64172 by default).
- For *unbrokered (direct) collaboration*, the guest collaborator's PCoIP client must be able to connect to the host on the configured collaboration port (UDP 64172 by default).

Current Limitations

- Only one guest collaborator can connect at a time.
- Collaboration sessions support only one screen. The host collaborator should set their PCoIP Software Client to *Fullscreen One Monitor* mode prior to starting the collaboration session.
- If the host and guest screen resolutions are different, the guest's screen will use scrollbars and letterboxing to display the shared content.

If *high performance client* mode is enabled, and if the host's resolution is greater than the guest's, the guest's screen will be clipped instead.

- The guest collaborator's session can only view and listen to the shared session. The guest collaborator has no ability to control the host's keyboard, mouse, microphone, or any other input device.
- The guest collaborator will not see the mouse cursor in the shared session.
- Collaboration session tokens expire after 1 hour. The expiration time is not currently configurable.
- Collaboration session tokens are single use. Once a collaboration guest has connected, a new token must be generated.
- When a collaboration session is disconnected by the guest collaborator, the **Stop Collaboration** button in the Collaboration Management console may incorrectly remain enabled. If this occurs, click **Stop Collaboration** to reset the button state and allow a new collaboration session to be started.
- Collaboration using PCoIP Ultra GPU Offload and Auto Offload are supported as experimental features on the PCoIP Graphics Agent only. PCoIP Ultra GPU Offload and Auto Offload are not supported on the PCoIP Standard Agent.
- CAS Brokered Collaboration sessions are only supported when the session connection is made using the PCoIP Connection Manager 22.04 or later.

Enabling Collaboration

The PCoIP Ultra Collaboration feature is disabled by default. To enable this feature, both *PCoIP Ultra CPU Offload* and *Collaboration* must be activated on the Graphics Agent for Windows.

To activate PCoIP Ultra CPU Offload and Collaboration:

1. Open the Local Group Policy Editor on the agent machine:
 - a. Press + **r** to open the run dialog
 - b. type **gpedit.msc** and press **Enter**.
2. Navigate to **Computer Configuration > Administrative Templates > PCoIP Session Variables > Non Overridable Administrator Settings**.
3. Select **Configure PCoIP Ultra**.
4. Click **Enabled**, and select one of the PCoIP Ultra offload modes:
 - CPU offload (supported)
 - GPU offload (experimental for collaboration)
 - Auto offload (experimental for collaboration)
5. Select **Configure user collaboration** in the GPO list and click **Enabled**.
6. **Optional:** The default port for collaboration sessions is **UDP 64172**. If you need to change the collaboration port number, stay in the GPO editor and:
 - a. Set the value to the new collaborator port number which can be found under the Options section.
7. Close the GPO editor.
8. Restart the Graphics Agent for Windows service.

See [Configuration Guide - Configurable Settings](#) for more detailed information on setting configuration values.

Hosting a Collaboration Session

To host a PCoIP Ultra Collaboration session, the host collaborator starts a PCoIP session, then generates an invitation token that is passed to the guest collaborator:

1. Connect to a PCoIP session with PCoIP Ultra CPU Offload enabled.
2. On the Graphics Agent for Windows machine, open a web browser and navigate to:

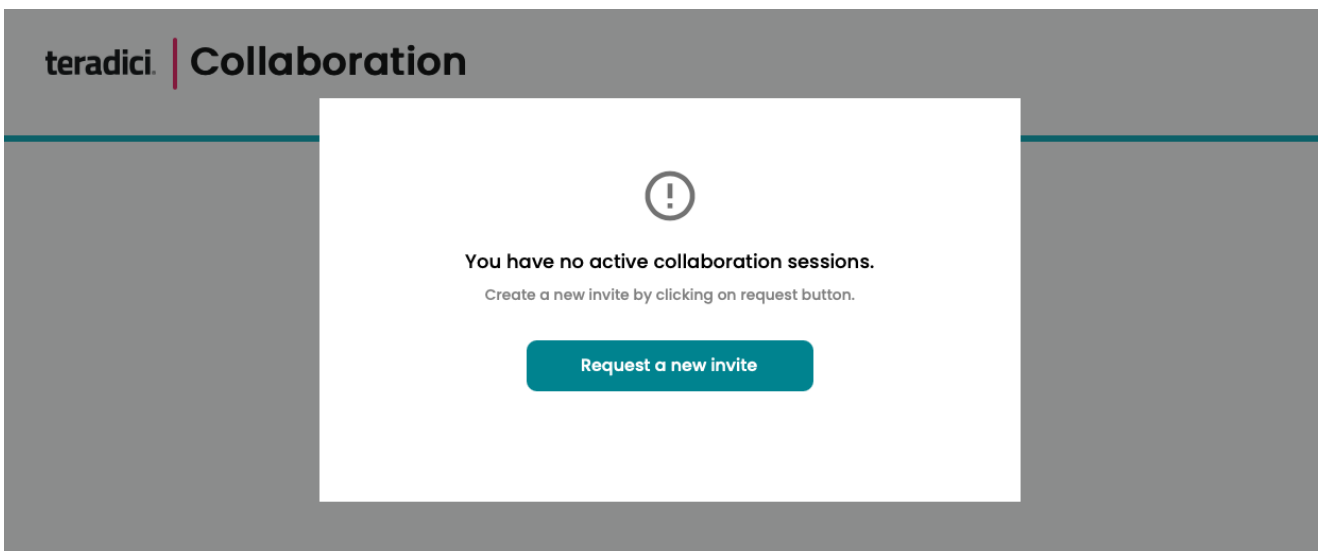
```
https://127.0.0.1:60443/collab
```

You will be prompted by a warning that the site you are visiting is not secure. Accept this warning and proceed to the page.

Important: Technology preview step

Accessing the Collaboration Console with a web browser is a temporary step for the technology preview. This will be replaced by a native collaboration console in a future release.

3. In the Collaboration Management Console, click **Request a new invite**.



Generating a new link and invite code

If you have already generated an invite but need to create a new one, click **Stop Collaboration** to invalidate the first invite and then click **Start Collaboration** to create a new one.

4. The Collaboration Management Console provides two pieces of information that are used to invite the guest collaborator:

- **Link:** The guest collaborator will use this link to join your session. This URI may be opened on any Mac, Windows or Linux machine with a PCoIP Software Client 21.03 or newer.

This URI contains a collaboration token which will expire **1 hour after the Host session was established**. The generated URI can only be used once. If the token expires, a new invite must be generated.

- **Invite Code:** This is a 6-digit code that confirms the identity of the individual connecting to the collaboration session. A new code is generated along with each new token.

teradici | Collaboration

Collaboration Invite

Your Collaboration Invite is ready to share!
To invite your collaborator, send them the link and the invite code.

Link
pcoip://.../connect?data=eyJhbGciOiJIUzI1NiJ9.eyJjb... Copy

Invite Code
237311 Copy

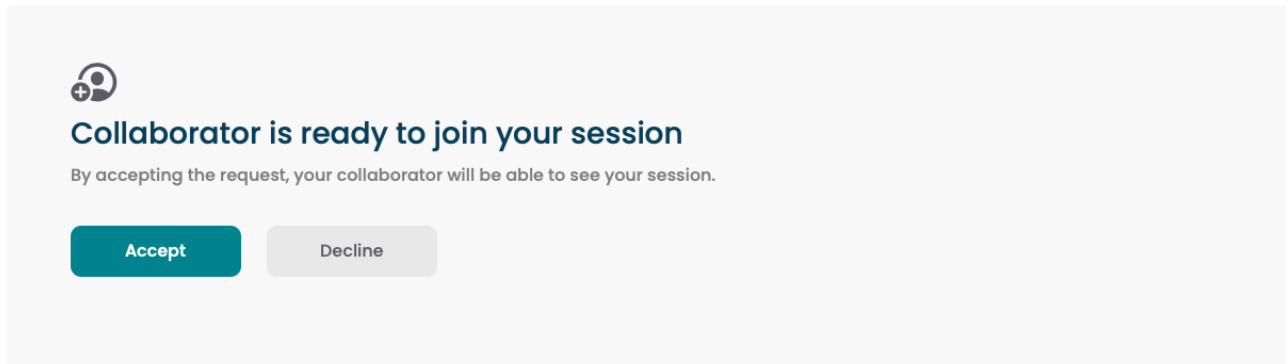
Do you need to change your invite? [Generate a new invite](#)

5. Share the PCoIP URI and the Collaboration Invitation Code with the guest collaborator.

Security best practice

Teradici recommends that these two pieces of information be shared with the guest user in separate communications, reducing risk in the event that a message is inadvertently sent, forwarded, or intercepted by a third party.

6. When the guest collaborator attempts to join the session, the Collaboration Management Console will display options to accept or reject the connection.



7. Click **Accept** to start the collaboration session. Click **Decline** to deny the request. Whether you accept the request or not, the invite has been used and is now disabled. Subsequent attempts will require a new invite.

Ending a Collaboration Session

The collaboration session will end when the host stops collaborating, or if either the host or guest collaborator disconnects their PCoIP connection.

To stop collaborating with a guest:

In the Collaboration Management Console, click the **Stop Collaboration** button. This ends the collaboration session. Once the session ends, the host can request a new invite and repeat the process above to start a new session.

teradici | Collaboration



Collaborating!

You have shared your PCoIP session with a collaborator.

Stop Collaboration

Joining a Collaboration Session

The guest collaborator can join the session once they have received the PCoIP URI and the Collaboration Invitation code.

1. Open a web browser and go to the PCoIP URI shared with you (you may be able to click this link directly, depending on how it was shared with you).
2. The web browser will warn you that the link is attempting to open the *PCoIP Client* application. Allow the browser to open the PCoIP client.
3. When the PCoIP client opens, it will prompt you for your name and the Collaboration Invitation Code. The value you enter for your name is used to tell the host who is joining; the Collaboration Invitation Code is the six digit number provided by the host. Enter both values and click **Submit**.
4. Once the host collaborator accepts your connection request, the Collaboration screen share will start.
5. To leave the collaboration session, select **Connection > Disconnect** from the PCoIP Client menu.

Changing the Collaboration Session Port

The default UDP Port for collaborator sessions is 64172. If necessary, you can change this port.

To change the Collaboration session port:

1. Open the Local Group Policy Editor on the agent machine:
 - a. Press + **r** to open the run dialog
 - b. type **gpedit.msc** and press **Enter**.
2. Navigate to **Computer Configuration > Administrative Templates > PCoIP Session Variables > Non Overridable Administrator Settings**.
3. Select **Configure user collaboration**.
4. Ensure that it is set to **Enabled**.
5. Enter the new UDP port used by collaborator session.
6. Close the GPO Editor.
7. Restart the PCoIP agent service.

Deskside Mode

Deskside mode is a special configuration which allows you to remotely access a physical workstation located in a non-private space, such as an office, while maintaining privacy.

When a PCoIP connection is established **and deskside mode is enabled**, the following rules apply:

- The machine's physical mouse and keyboard are blocked and cannot be used.
- Physical displays that the PCoIP agent controls will be blanked whenever possible.
- When the PCoIP session disconnects, the local input devices and displays are returned to normal operation.

Deskside mode can only be enabled on physical workstations using the Graphics Agent for Windows, with physical input devices and displays attached.

Enabling Deskside Mode

Deskside mode is disabled by default. To enable deskside mode, set the `enable deskside` directive as described in [Configuration: Deskside Mode](#).

Supported Displays

The Graphics Agent for Windows, in combination with a GPU, supports a maximum of four displays on the PCoIP client and a maximum resolution of 4K UHD (3840×2160).

Important: Display acceleration requires a supported GPU

The Graphics Agent for Windows must be deployed with one or more [supported GPUs](#). GPUs may have their own licensing requirements. For help troubleshooting configuration or licensing problems, see [Handling GRID Configuration Problems](#).


PCoIP agents support any of these monitor configurations:

- Vertical line
- Horizontal line
- Box display


Monitors can be used in any standard rotation (0°, 90°, 180°, or 270°). Any monitor can be the primary.

The Graphics Agent for Windows, in combination with one or more properly configured **and licensed** GPUs, provides the following benefits:

- **Display resolutions:** The Graphics Agent for Windows can provide any resolution a client asks for up to 4K UHD. The practical number of displays available at any given resolution is determined by the GPU, host system hardware, GPU profile licensing, and the connecting client's version.
- **Hot-pluggable displays from Tera2 PCoIP Zero Clients:** Displays may be added and removed as needed during an active PCoIP session when using a Tera2 PCoIP Zero Client.
- **3D application support:** Full-screen 3D applications are supported.

 **Note: Using multiple high-resolution displays**

Systems with multiple high-resolution displays, such as quad 4K UHD topologies, require powerful system infrastructure. Be sure to use a system with sufficient bandwidth, client and host capabilities, and an appropriate number of licensed GPUs to support your required display topology.

 **Important: Attaching monitors to the host machine is not supported**

PCoIP client supports a maximum of four displays. Attaching extra monitors to the host machine will conflict with client display topologies.

 **Caution: Low-memory vGPU profiles may limit displays**

If you're running on a Windows 10 or Windows Server 2016 machine, a vGPU profile with less than 1024 MB may be limited to a single monitor. See NVIDIA's [The Right vGPU Profile for Windows 10](#).

Supported Installer Languages

The PCoIP agent installer supports the following languages:

- French
- German
- Spanish
- Simplified Chinese
- Traditional Chinese
- Japanese
- Portuguese
- Italian
- Korean
- Russian
- Turkish

PCoIP Ultra

The Graphics Agent for Windows provides support for PCoIP Ultra, the latest protocol enhancements from Teradici. PCoIP Ultra is optimized for truly lossless support with bit-exact color accuracy and preservation of content detail at the highest frame rates.

PCoIP Ultra protocol enhancements propels our industry-recognized performance into the future of remote computing, with faster, more interactive experience for users of remote workstations working with high-resolution content.

PCoIP Ultra enhancements are disabled by default. You must [enable them manually](#).

PCoIP Ultra is appropriate for specific use cases

For most users, the default PCoIP protocol will provide the best possible experience. Carefully review the recommended use cases in the next section to determine whether you should enable it.

For additional detail on PCoIP Ultra technical requirements for various use cases and troubleshooting steps, refer to [KB 2109: PCoIP Ultra Troubleshooting](#).

When to Enable PCoIP Ultra

PCoIP Ultra is appropriate for users with the following requirements:

Auto Offload: Achieves the best balance between color accuracy and network efficiency. This setting is appropriate for work-from-home or WAN content creators who require optimized delivery of high resolution content, including video playback, while still achieving build-to-lossless color accuracy.

CPU Offload: Provides efficient scaling across multicore CPUs, leveraging AVX2 instruction sets. Appropriate for users that require CPU-optimized delivery of 4K UHD, high-framerate video playback and build-to-lossless color accuracy. It is also useful when GPU encoding resources must be reserved for video encoding applications, typically in LAN environments.

GPU Offload: PCoIP encoding is always offloaded to a GPU. Appropriate for users who demand the highest possible CPU efficiency.

For *all other scenarios*, Teradici recommends that you leave PCoIP Ultra disabled.

Requirements

To take advantage of PCoIP Ultra, you need:

- A PCoIP agent (any type), 22.04 or later
- A PCoIP Software Client (any type), 22.04 or later

PCoIP Tera2 Zero Clients do not support PCoIP Ultra

PCoIP Ultra is only available through PCoIP Software Clients.

- **CPU offload** requires CPU support for the AVX2 instruction set on both the agent and client machines.
- **GPU offload** requires an NVIDIA graphics card that supports NVENC on the agent machine.

Enabling PCoIP Ultra

To enable PCoIP Ultra features, edit your GPO settings and set a **Ultra** mode as required:

- **CPU Offload** To turn on *PCoIP Ultra CPU Offload*. CPU offload requires CPU support for the AVX2 instruction set on both the remote host and client. The PCoIP Zero client is not supported. CPU offload is recommended for 4K UHD resolutions with video playback requirements of 30 fps (or more), and the highest possible image quality and color accuracy.
- **GPU Offload** To turn on *PCoIP Ultra GPU Offload* - GPU offload requires an NVIDIA graphics card on the remote host capable of NVENC. GPU Offload is recommended when the CPU impact of pixel encoding should be minimized.
- **Automatic Offload** To use *PCoIP Ultra Auto Offload* This setting allows PCoIP to automatically switch between CPU and GPU Offload modes; CPU offload is used by default to provide the best image fidelity, and GPU offload is used during periods of high display activity to provide improved frame rates and bandwidth optimization.

This setting is only effective if the remote host and client endpoints are capable of both CPU and GPU Offload.

All PCoIP Ultra settings take effect on the next PCoIP session. No configuration is required on the PCoIP Software Client.

Turning PCoIP Ultra off

To disable PCoIP Ultra and use the default PCoIP experience instead, set the `Ultra` GPO setting to `disabled`.

Setting GPO variables

If you don't know how to enable GPO variables, refer to [Configuring the Graphics Agent for Windows](#).

Printing Support

When a local printer is visible to a client computer by USB connection or local network connection, it may be possible to print from the host machine. Refer to the following table for local printing support.

Cloud printing is available from all clients if supported by the desktop system.

	Zero Client	Software Client	Mobile Client
Local USB Printing	Printer is connected to a USB port on the zero client	printer is connected to a USB port on the client computer	Printing is not supported on mobile clients.
Local Network Printing			
Cloud Printing			

Smart Card Authentication

Smart Cards, such as PIV cards, may be used to authenticate to your PCoIP Session. Smart Card support requires a PCoIP agent and a PCoIP Tera2 Zero Client for direct (unbrokered) connections. For brokered connections, a PCoIP Connection Manager & Security Gateway *and* a Leostream broker are also required, in addition to the PCoIP agent and PCoIP Tera2 Zero Client.

Requirements

Component		Version
Client	PCoIP Tera2 Zero Client	Firmware 21.01+
Infrastructure	<p><i>(required for brokered connections only, not required for direct connections)</i></p> <ul style="list-style-type: none"> • Connection Manager & Security Gateway 20.07+ • Leostream broker 	
Host	PCoIP Standard or Graphics Agent for Windows	21.03+
	ActivClient Middleware	7.1, 7.2

Notes and Limitations

- Smart Card Authentication works only with the PCoIP Standard Agent for Windows and the PCoIP Graphics Agent for Windows.
- Smart Card authentication can only be enabled or disabled during installation. If the PCoIP agent has already been installed, re-install the software using the instructions below.
- The interface-driven installer for the Graphics Agent for Windows cannot enable this functionality. You must use the scripted (silent) installer.
- Teradici has tested ActivClient 7.1 and 7.2; other versions may work but have not been tested.

- While in a PCoIP session, the remote desktop's Device Manager will show **two** identical smart cards. This is expected and does not affect the session.

Setup

Before you begin, make sure your installed components meet the minimum requirements described above, and ensure your smart card is configured correctly.

To configure the remote machine:

1. Connect to the remote machine via RDP.
2. On the remote machine, install the Graphics Agent for Windows using the `/InstallVSCReader` argument.

- **Windows BAT:** Open a Windows command line tool and enter the following:

```
start /WAIT <path_to_installer> /S /NoPostReboot /InstallVSCReader
echo %ERRORLEVEL%
```

...where `<path_to_installer>` is the system filepath of the installer file.

- **Windows PowerShell:** Open a PowerShell window and enter the following:

```
$process = Start-Process -FilePath <path_to_installer> -ArgumentList "/
S /NoPostReboot /InstallVSCReader _?<path_to_installer>" -Wait -PassThru;
$process.ExitCode
```

...where `<path_to_installer>` is the system filepath of the installer file. Note that this argument is used twice!

3. Configure the Graphics Agent for Windows license information, [as described here](#).
4. Install the ActivClient middleware (available from your SmartCard vendor) on the host machine.



Middleware installation notes

- ActivClient middleware must be installed in a console session.
- To prevent conflicts, only one middleware should be installed.

5. Reboot the remote machine.

To configure the PCoIP Tera2 Zero Client:

1. Update the device's firmware to the latest available version.
2. Configure the device to connect to the remote machine (normally, the default *auto-detect* mode is best).

Connecting

Once the agent and PCoIP Tera2 Zero Client are prepared as described, you can connect to a PCoIP session by inserting a SmartCard into the card reader attached to the PCoIP Tera2 Zero Client.

To connect to the PCoIP session using the smart card:

1. Plug the smart card reader into the PCoIP Tera2 Zero Client.
2. Plug the smart card into the PCoIP Tera2 Zero Client.
3. Enter the IP address of the remote host machine.
4. If required, enter your PIN or credentials when prompted. For detailed instructions, refer to [Connecting to a Session Using Smart Cards](#) in the PCoIP Zero Client Firmware Administrators' Guide.

Using the Smart Card in a PCoIP Session

You can also use your smart card within a PCoIP session, to authenticate to applications on the remote desktop.

To use your smart card in-session:

1. Attach the smart card reader to the PCoIP Tera2 Zero Client.
2. Add your reader to the PCoIP Tera2 Zero Client's *Bridged Devices* table.
 - a. Log in to the Zero Client's *Administrative Web Interface*.
 - b. Select **Configuration > USB**.

- c. In the [Bridged Devices](#) section, click **Add New** and add your reader.

Removing Smart Card Support

In order to remove support for Smart Card Authentication, uninstall the agent and then re-install it without using the `/InstallVSCReader` option.

USB Support

PCoIP agents support USB devices attached to PCoIP clients. Administrators can set rules governing allowed and disallowed devices, device classes, or device protocols.

Important: USB support is enabled by default

USB bridging is enabled by default. If you want to restrict or disable USB support, you can [globally disable](#) or [set rules](#) governing USB behavior.

Isochronous USB device support

Some USB devices with time-sensitive information, such as webcams, are supported when connecting to the PCoIP Agent for Linux.

In addition, Teradici's technology partners provide additional solutions to expand peripheral support. For more information, look for partners listed under *Peripherals* on the [Teradici Technology Partners](#) page.

Bloomberg Keyboard Support

The PCoIP Graphics Agent for Windows supports **FRE100** and **STB100** keyboards when connected to a PCoIP Zero Client via USB.

Xbox One Controller Support

The PCoIP Graphics Agent for Windows supports Xbox One controllers when attached to PCoIP Zero Clients.

 **Supported by PCoIP Zero Clients only**

This feature is supported only by PCoIP Zero Clients. It is not currently supported by PCoIP Software Clients.

The following Xbox One controllers are supported:

- Xbox One 2015
 - Xbox One
 - Xbox One S
 - Xbox One Bt
 - Xbox One Elite
-
- Bug fixes and stability enhancements.

Wacom Tablet Support

The Graphics Agent for Windows supports Wacom tablets in two configurations: *bridged*, where peripheral data is sent to the desktop for processing, and *locally terminated*, where peripheral data is processed locally at the PCoIP Client.

Locally terminated Wacom tablets are much more responsive and tolerate high-latency connections, but may not support advanced features like Touch. For information regarding feature support and PCoIP client and agent requirements, see the following sections.

Locally Terminated Wacom Tablets

Locally-terminated tablets have greatly improved responsiveness, and tolerate higher-latency (including 25ms and higher) networks.

For the best experience and most complete device support, use the latest available PCoIP agent, PCoIP software client, and PCoIP Zero Client firmware. To find out when support was added for individual Wacom device, refer to the release notes for your client.

The following Wacom tablet models have been tested and are supported with local termination mode:

PCoIP client support for *locally terminated* Wacom tablets and the Graphics Agent for Windows

	PCoIP Tera2 Zero Client 6.2.0+, except as noted	PCoIP Software Client for Windows	PCoIP Software Client for macOS	PCoIP Software Client for Linux
Intuos Pro Small <i>PTH-460</i>	—	✓	✓	✓
Intuos Pro Medium <i>PTH-660</i>	✓	✓	✓	✓
Intuos Pro Large <i>PTH-860</i>	✓	✓	✓	✓

	PCoIP Tera2 Zero Client 6.2.0+, except as noted	PCoIP Software Client for Windows	PCoIP Software Client for macOS	PCoIP Software Client for Linux
Cintiq 22HD DTK-2200	✓ ¹	✓	—	✓
Cintiq 22 DTK-2260	—	✓	✓	✓
Cintiq Pro 24 DTK-2420	✓ ¹	✓	—	✓
Cintiq 22HDT - Pen & Touch DTH-2200	✓ ¹	—	—	—
Cintiq Pro 24 - Pen & Touch DTH-2420	✓ ¹	✓	✓	✓
Cintiq 32 Pro - Pen & Touch DTH-3220	✓ ²	✓	✓	✓

Important: Touch is not supported

Touch features of Wacom devices are not supported with local termination.

Other Wacom tablets may work, but have not been tested and should not be used in production environments.

Bridged Wacom Tablets

Bridged Wacom tablets are supported only in low-latency environments. Tablets in network environments with greater than 25ms latency will show reduced responsiveness and are not recommended.

The following Wacom tablet models have been tested and are supported with bridged mode:

PCoIP client support for *bridged* Wacom tablets and the Graphics Agent for Windows

	PCoIP Tera2 Zero Client	PCoIP Software Client for Windows	PCoIP Software Client for macOS	PCoIP Software Client for Linux
Intuos Pro Small <i>PTH-460</i>	✓	✓	✓	✓
Intuos Pro Medium <i>PTH-660</i>	✓	✓	✓	✓
Intuos Pro Large <i>PTH-860</i>	✓	✓	✓	✓
Cintiq 22HD <i>DTK-2200</i>	✓	✓	✓	✓
Cintiq Pro 24 <i>DTK-2420</i>	✓	✓	✓	✓
Cintiq 22HDT - Pen & Touch <i>DTH-2200</i>	✓	✓	✓	✓
Cintiq Pro 24 - Pen & Touch <i>DTH-2420</i>	✓	✓	✓	✓
Cintiq 32 Pro - Pen & Touch <i>DTH-3220</i>	✓	✓	✓	✓

Other Wacom tablets may work, but have not been tested.

1. Local termination for Cintiq 22HD, 22HDT, 24P, and 24PT requires Tera2 Zero Client firmware 6.5.0 or higher.
2. Local termination for Cintiq Pro 32PT requires Tera2 Zero Client firmware 20.04 or higher.

Webcam Support

USB webcams are supported between the Graphics Agent for Windows and PCoIP Software Clients for Windows or Linux. Webcams can be used with Microsoft Teams, Zoom, and other conferencing applications running on the remote desktop.

For detailed information about tested webcams, their performance metrics, and information on testing your own webcams, see [PCoIP Cloud Access Software Webcam Support](#) in the Teradici Knowledge Base.

As of Graphics Agent for Windows 21.07, this feature is enabled by default.

Requirements

Webcam support in Cloud Access Software requires the following:

- PCoIP Software Client for Windows or PCoIP Software Client for Linux, 21.07+
- PCoIP Standard Agent for Windows or PCoIP Graphics Agent for Windows, 21.07+
- USB-attached webcam.

Notes and Limitations

- Webcams must be connected via USB. Webcams that are not USB, such as embedded laptop webcams, are not supported.
- Linux agents are not supported.
- PCoIP Software Client for macOS is not supported.

Setup

On the client, connect the webcam as described in the following guides:

- PCoIP Client for Windows: [USB Bridging of Webcams](#)

- PCoIP Client for Linux: [USB Bridging of Webcams](#)

No setup is required on the remote host.

PCoIP Graphics Agent for Windows Installation Guide

Before you proceed with installation, a few prerequisites must be met.

Prerequisites

These instructions assume you have already built the remote desktop machine, and that the machine meets the [agent's requirements](#).

The PCoIP Graphics Agent has additional requirements for GPU acceleration. Make sure your machine is configured with a [supported card](#) before you start. We'll install the correct driver as part of this process, so you don't need to worry about that yet.

A few other things to confirm before proceeding:

- The desktop machine requires the following ports to be open: TCP 443, TCP 60443, TCP 4172, and UDP 4172.
- Your GPUs must be licensed with their manufacturers (if required).
- You should be able to run applications as an administrator.
- The PCoIP Agent must be able to execute PowerShell scripts. If your PowerShell execution policy set to **Restricted**, the execution policy will be automatically changed so installation can proceed. ***If the agent cannot execute PowerShell scripts or change the execution policy, the installation will fail.***
- If you are using a PCoIP Local License Server, [PCoIP Local License Server](#), you'll need to know its URL and port numbers.

Installation Overview

Once your prerequisites are in place, you can proceed with installation. Here's a brief overview of the process:

1. Connect to the machine using RDP.

2. Install the appropriate [GPU drivers](#) for your system.
3. Download or transfer the [PCoIP Graphics Agent for Windows installer](#) to the system.
4. Install the PCoIP Agent using one of these methods:
 - Using the installer's [setup wizard](#) for a guided, interface-driven process, or
 - Silently using a [script](#)
5. If required, [configure](#) the agent software.
6. Disconnect the RDP session.
7. Connect to the desktop using a PCoIP client.

If you're ready to start, connect to your machine with an RDP client and proceed to [Installing GPU Drivers](#).

Installing GPU Drivers on Windows Desktops

Before installing the PCoIP Agent, you need to install the correct driver for your configured GPUs. RDP into your machine and then proceed with the installation instructions below.

The correct driver versions for release 22.04 are shown below. Be sure to install the specified driver, and ***not the latest available version***. Teradici qualifies Graphics Agent support against the driver versions listed here.

Documentation for download and installation of these drivers is provided by their manufacturers. As a convenience, we've provided the current locations of relevant third-party documentation here. While we do our best to keep these links up to date, Teradici does not control these resources or their locations and it's possible that they could break.

Install GPU Drivers on ESXi and KVM Hypervisors

Instance Type	Supported GPUs	Supported NVIDIA GRID driver version	Installation instructions
ESXi or KVM	GPUs as listed in NVIDIA's GRID release notes .	GRID 14.0 (511.65)+	Download the driver directly from NVIDIA and follow their instructions to install. You can only access this driver if you have purchased a corresponding card.

Install GPU Drivers on Physical PCs

Instance Type	Supported GPUs	Supported NVIDIA driver version	Installation instructions
Physical PC	<ul style="list-style-type: none"> • Tesla (any) • Quadro (2000+) <p>.....</p> <p>Consumer-grade cards: [¹</p> <ul style="list-style-type: none"> • GeForce RTX 2080 • GeForce RTX 3070 • GeForce RTX 3080 • GeForce GTX 1080 • GeForce GTX 1050 • GeForce GTX 660 • Quadro 2000 • Quadro P650 • Additional cards are expected to work, but have not been tested. 	Use the latest 511.09+ driver for your supported GPU	Download the driver directly from NVIDIA and follow their instructions to install. You may only have access to this driver if you have purchased a corresponding card.

Install GPU Drivers on AWS Instances

Instance Type	Supported GPUs	Supported NVIDIA GRID driver version	Installation instructions
EC2 G3	NVIDIA M60	GRID 14.0 (511.65)+	Download the driver from Amazon using the <i>AWS Tools for Windows PowerShell</i> , as documented by Amazon .

Instance Type	Supported GPUs	Supported NVIDIA GRID driver version	Installation instructions
EC2 G4dn	NVIDIA T4	GRID 14.0 (511.65)+	Download the driver from Amazon using the <i>AWS Tools for Windows PowerShell</i> , as documented by Amazon . G4dn instances must also include NVIDIA licensing, as documented by NVIDIA .
EC2 G4ad	AMD Radeon Pro V520	20.10.25.04	Download the driver from Amazon using the <i>AWS Tools for Windows PowerShell</i> , as documented by Amazon .

Install GPU Drivers on Azure NV-series Instances

Instance Type	Supported GPUs	Supported NVIDIA GRID driver version	Installation instructions
Azure NV, NVv3	NVIDIA M60	GRID 13.1 (472.329)+	Download from Microsoft .
Azure NVv4	AMD Radeon MI25	21.Q2	Follow the instructions in Microsoft's Azure documentation .

Install GPU Drivers on Google Cloud Instances

Instance Type	Supported GPUs	Supported NVIDIA GRID driver version	Installation instructions
Google Cloud instances	NVIDIA P4, P100, T4	GRID 13.1 (472.329)+	Installer available here .

Install GPU Drivers on Other Instance Types

Instance Type	Supported GPUs	Supported NVIDIA GRID driver version	Installation instructions
All other instance types	GPUs as listed in NVIDIA's GRID release notes .	GRID 14.0 (511.65)+	See below for instructions.

Download and Install AMD GPU Drivers

Instance Type	Supported GPUs	Supported NVIDIA GRID driver version	Installation instructions
ESXI and physical, non-virtualized	AMD Radeon™ Pro <i>(Technology Preview)</i>	AMD Radeon™ Pro driver version 17.30.1041 or newer <i>(technology preview)</i>	Contact Teradici for instructions

Installing the PCoIP Agent

Once the GPU drivers are present, you can download the [PCoIP Installer](#).

-
1. PCoIP agent machines using these cards require special configuration and have limitations beyond those documented in this guide. For more information and detailed instructions, see [Teradici Cloud Access Software Instructions for Consumer Grade NVIDIA GPUs](#) in the Teradici Knowledge Base. Additional cards will likely work, but have not been tested.

Download the PCoIP Graphics Agent Installer

The PCoIP Graphics Agent for Windows installer is executed from the remote desktop. You can download the installer directly onto the machine, or download it separately and transfer it yourself.

The installer can be downloaded [here](#).

Once the file is present on the remote machine, you can [run the setup wizard](#) or [install it silently](#) using a script.

Installing the PCoIP Graphics Agent for Windows

Download the PCoIP Graphics Agent for Windows Installer

The PCoIP Agent installs at the system level and is available to all users. You must have administrator privileges to install it. You can download the installer directly onto the machine, or download it separately and transfer it yourself.

The installer can be downloaded [here](#).

Install or Update the PCoIP Graphics Agent for Windows

Once the file is present on the remote machine, you can [run the setup wizard](#) or [install it silently](#) using a script. The procedure is the same for new installations and system upgrades.

Before you proceed, keep the following notes in mind:

- The installer may appear to hang while working. Allow at least one minute for it to finish.
- You may be disconnected from your RDP session while the installer is working. The installation does not stop, and you can reconnect immediately.
- The NVIDIA Capture SDK is enabled automatically by the PCoIP agent installer. If you update your NVIDIA drivers after installing the PCoIP agent, the SDK may be disabled by the NVIDIA installer. If this happens, you'll need to manually [re-enable it](#).
- ESXi users: when the PCoIP agent is running, the desktop's graphics subsystem is unavailable to hypervisors. You can only view the system GUI when connecting with a PCoIP client.

For example, you cannot view an ESXi virtual machine console through vSphere. You must connect to the machine using PCoIP.

Installing the PCoIP Agent using the Wizard

If you're installing the PCoIP agent via the Windows interface and would prefer to use a graphical interface and guided setup, use the PCoIP agent setup wizard. This method can only be used via


RDP, so if you're updating an existing installation, either run the wizard in an RDP session or [perform a scripted installation](#) instead.

 **Important: Required ports will be automatically opened**

The Graphics Agent for Windows installer will add firewall exceptions for the following required PCoIP ports during installation: TCP 443, TCP 4172, UDP 4172, and TCP 60443.

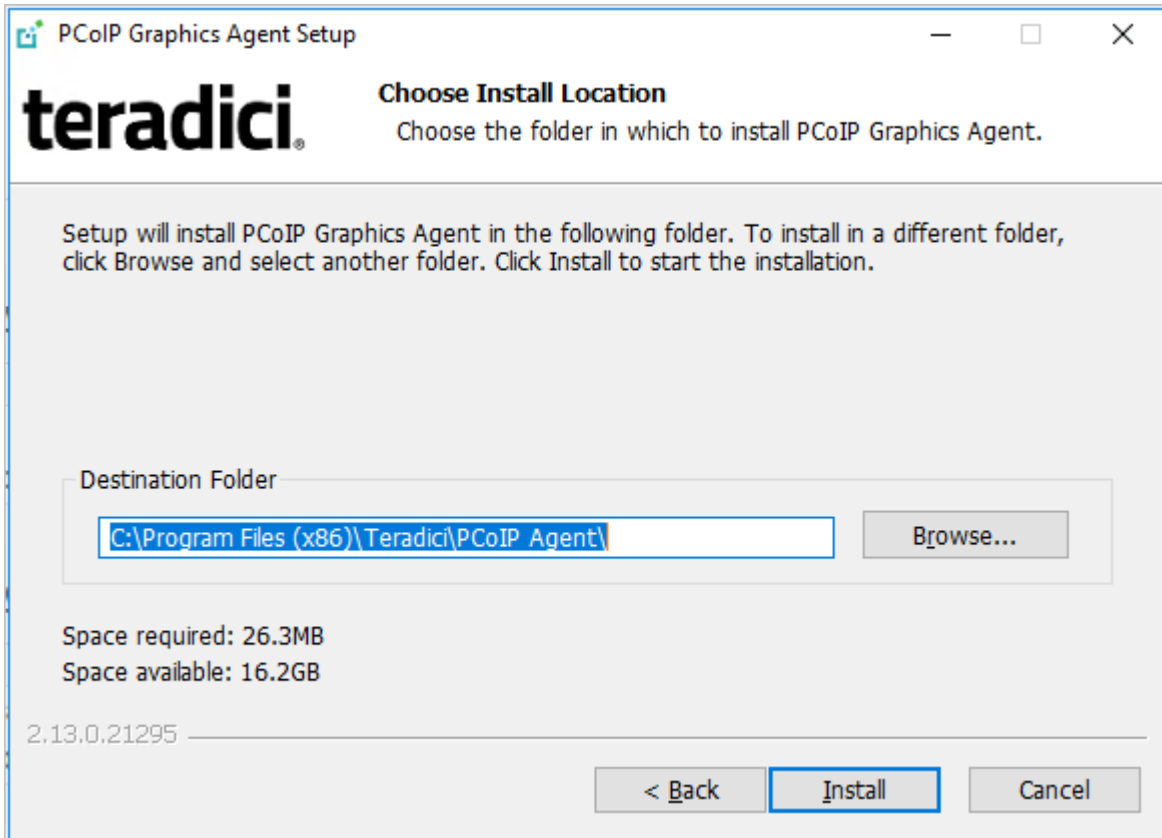
To install the PCoIP Agent using the setup wizard:

1. If you aren't already in an RDP session, connect to the desktop with an RDP client.
2. Navigate to the PCoIP agent installer file and launch it. The setup wizard will appear.

 **Important: Installing without USB support**

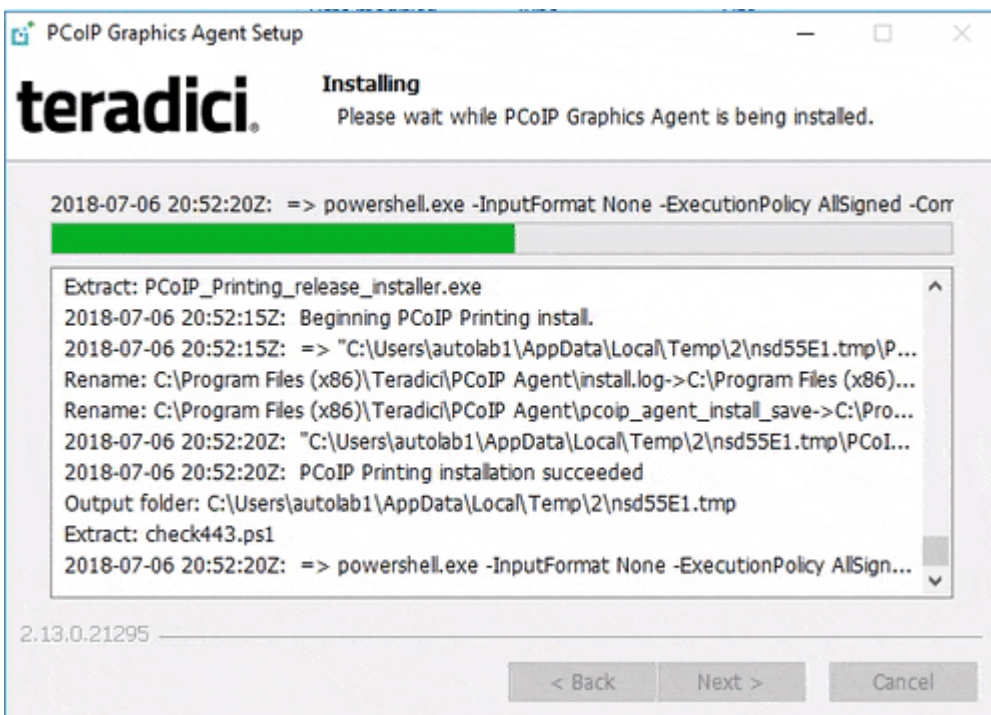
To install the PCoIP Agent *without USB support*, run the installer [from the command line](#) and include the parameter `DisableUSB`. The installer will run but will skip all USB support components. When installed this way, the desktop will be unable to support USB devices other than standard keyboards and mice.

3. Select an installer language and click **OK**.
4. Click **Next** at the welcome screen.
5. Review and accept the license agreement by clicking **I agree**:
6. Specify an installation directory and click **Install**.



By default, the software will be installed in the C:\Program Files\Teradici\PCoIP Agent directory.

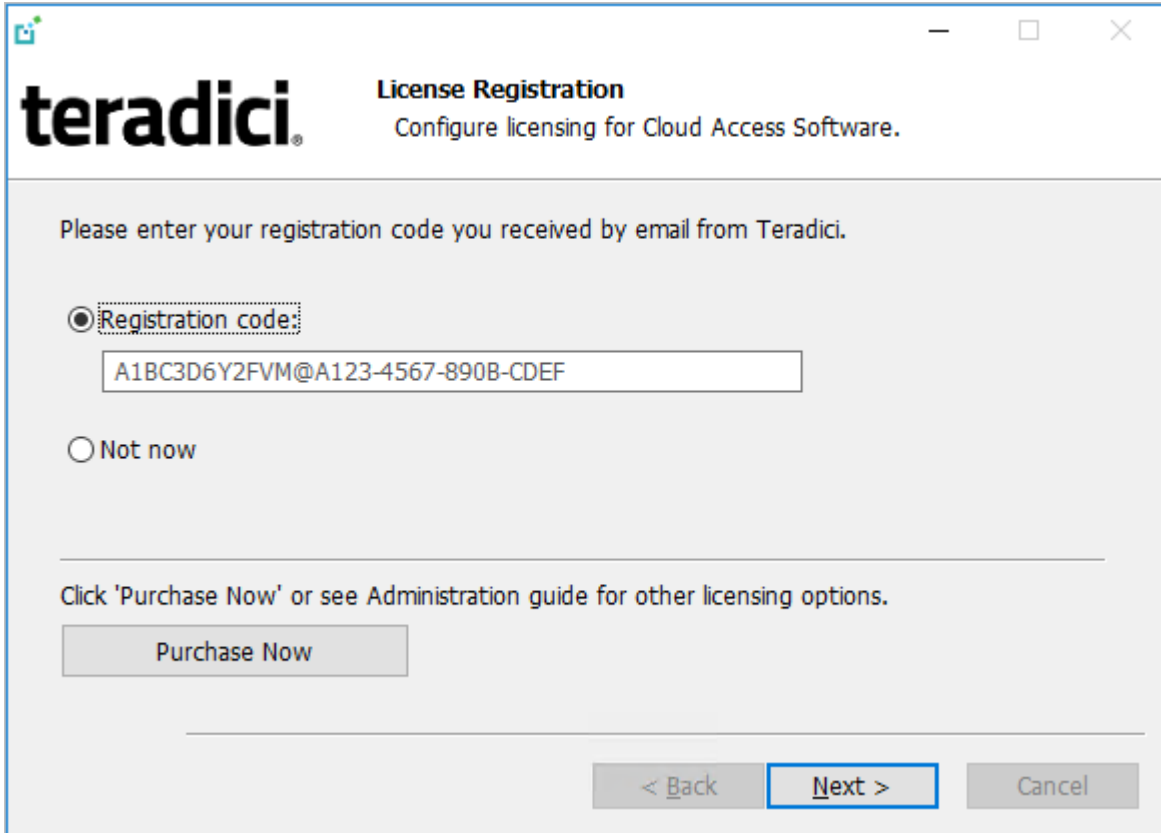
The PCoIP agent files will be installed on your desktop.



7. Provide your licensing information on the License Registration screen:

Important: Local license server users

If you are using a local [PCoIP License Server](#), do not enter a registration code here. Select **Not now** and then click **Next** instead. You will configure your license server information [later](#).



teradici License Registration
Configure licensing for Cloud Access Software.

Please enter your registration code you received by email from Teradici.

Registration code:
A1BC3D6Y2FVM@A123-4567-890B-CDEF

Not now

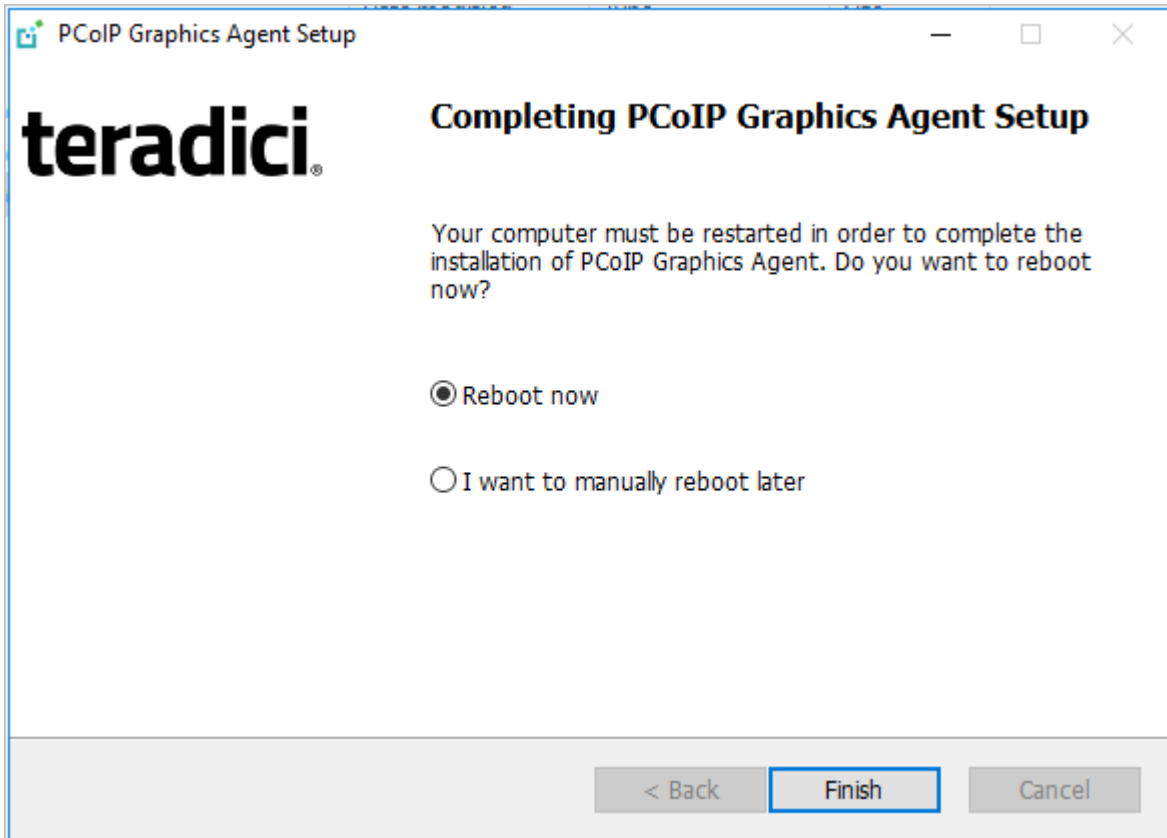
Click 'Purchase Now' or see Administration guide for other licensing options.

Purchase Now

< Back Next > Cancel

Type or paste a registration code in the *Registration code* field and click **Next** for the proxy settings screen.

- If you use a proxy server to access the internet, select **Use a proxy server for Internet connection** and specify the address and port numbers of the proxy server, then click **Next** to register the license.
 - If your system does *not* use a proxy server, leave this screen unchanged and click **Next** to register the license.
8. The Windows desktop must be rebooted to complete installation; you can choose to do that now, or do it yourself later. Some features may not work until the system is restarted.



9. Click **Finish** to exit the installer.
10. If you skipped license registration, complete registration by following one of the procedures listed [here](#).
11. Disconnect the RDP session.

Once the PCoIP agent is installed and licensed, you can [configure it](#) or [connect to it](#) with a PCoIP client.

Scripted Installations

The PCoIP Agent can be installed on the desktop programmatically, without using a graphical interface. The installation will proceed silently and the system will reboot when finished.

Scripted installation requires access to the Windows Command Prompt or PowerShell.

Important: Required ports will be automatically opened

The Graphics Agent for Windows installer will add firewall exceptions for the following required PCoIP ports during installation: TCP 443, TCP 4172, UDP 4172, and TCP 60443.

To install the PCoIP Agent via a script:

1. Connect to the desktop using RDP or the hypervisor's console tool.
2. Copy the agent installer file to the desktop.
3. Run the agent installer using one of the following methods:

Overriding GPU prompts

If you need to bypass the installer's GPU prompt, add the `/Force` flag to the following commands. This is useful when using the Graphics Agent for Windows in a deskside configuration with a physical PC, when the GPU prompt may not apply.

About `/NoPostReboot`

the `/NoPostReboot` flag, shown in the following commands, tell the installer not to reboot the machine. If omitted, the machine will be rebooted when the installer finishes.

- **Windows BAT:** Open a Windows command line tool and enter the following:

```
start /WAIT <path_to_installer> /S /NoPostReboot
echo %ERRORLEVEL%
```

...where `<path_to_installer>` is the system filepath of the installer file.

- **Windows PowerShell:** Open a PowerShell window and enter the following:

```
$process = Start-Process -FilePath <path_to_installer> -ArgumentList
"/S /NoPostReboot _?<path_to_installer>" -Wait -PassThru;
$process.ExitCode
```

...where `<path_to_installer>` is the system filepath of the installer file. Note that this argument is used twice!

Both methods will return one of these process return codes:

code	description
0	success

code	description
1	installation aborted by user (user cancel)
2	installation aborted due to error
1641	success, reboot required

4. If you are using Cloud Licensing, register the PCoIP agent's license by running the **pcoip-register-host.ps1** script:

```
"C:\Program Files\Teradici\PCoIP Agent\pcoip-register-host.ps1" [-ProxyServer <String>] [-ProxyPort <String>] -RegistrationCode <String> [<CommonParameters>]
```

Where:

- **-RegistrationCode** sets the registration code to use.
- **-ProxyServer** sets the address of your proxy server, if you have one.
- **-ProxyPort** sets the port number of your proxy server, if you have one.

Important: PowerShell execution policy

PowerShell scripts must be permitted to run on your machine. If your execution policy prevents pcoip-register-host.ps1 from running, you can temporarily enable PowerShell script execution with the following command:

```
powershell.exe -InputFormat None -ExecutionPolicy Bypass -Command .\pcoip-register-host.ps1
```

Once the PCoIP agent is installed and licensed, you can [configure it](#) or [connect to it](#) with a PCoIP client.

Register a License After Installation

In most cases, a PCoIP license is registered during installation. If you are using a local license server, or if you skipped registration during installation, you can register your agent using the methods described next.

- **Registering with Teradici Cloud Licensing:** If you are using Teradici's Cloud Licensing service (this is most users), you can register the agent using the [PCoIP control panel](#) or via a [PowerShell script](#)
- **Registering with a Local License Server:** If you are serving licenses with your own license server, your registration method depends on your brokering environment. For complete information and instructions, see [Licensing PCoIP Agents with a Local License Server](#).

Licensing The Graphics Agent for Windows

The Graphics Agent must be assigned a valid PCoIP session license before it will work. Until you've registered it, you can't connect to the desktop using a PCoIP client.

You receive a registration code when you purchase a pool of licenses from Teradici. Each registration code can be used multiple times; each use consumes one license in its pool.

Note: Registration code format

Registration codes look like this: `ABCDEFGHI12@AB12-C345-D67E-89FG`

PCoIP agent license registrations are managed automatically by Teradici's [Cloud Licensing Service](#). If necessary, you can manage them yourself, using your own locally-installed [PCoIP License Server](#) instead.

If you need to purchase licenses, contact [Teradici](#).

Troubleshooting Licensing Issues

If you're encountering problems with Teradici licensing, refer to [Troubleshooting License Issues](#).

Using Teradici Cloud Licensing

To use Cloud Licensing, all you need to do is provide a registration code for each PCoIP agent in your deployment (the same registration code can be used multiple times).

Whitelist network blocks for Teradici Cloud Licensing

If you are using Teradici Cloud Licensing, you will need to whitelist the following:

- teradici.flexnetoperations.com
- teradici.compliance.flexnetoperations.com

Alternatively, you can also ensure the following network blocks are whitelisted:

- **Production:** 64.14.29.0/24
- **Disaster Recovery:** 64.27.162.0/24

The following network blocks are not currently in use, but may also be used in the future:


- **Production:** 162.244.220.0/24
- **Disaster Recovery:** 162.244.222.0/24

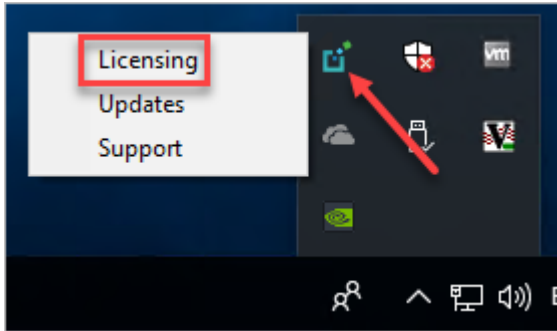
The Windows setup wizard collects this registration code during installation. If you're already registered your PCoIP agents, there's nothing more to do here. If you've already installed the PCoIP agent software but *have not* registered it yet, you can register post-installation using the [PCoIP Control panel](#) or via a [PowerShell Script](#).

Register or Renew a PCoIP License With the PCoIP Control Panel

Use this method to register or renew an installed PCoIP agent using the Windows user interface.

To provide the registration code via the PCoIP Control Panel:

1. Connect to the desktop using RDP (if you're renewing a license that is still active, you can use a PCoIP session to do this instead).
2. Open the *PCoIP control panel* by clicking  in the system tray and select **Licensing** from the pop-up menu:



The PCoIP Control panel appears with the licensing tab enabled.

3. Provide the registration code in the registration code field.

Register or Renew a PCoIP License With PowerShell

Use this method to register a PCoIP agent using Windows PowerShell. You can do this during a scripted installation, or at any time after installation.

To provide the registration code via the Windows PowerShell script:

1. Connect to your desktop using RDP.
2. Run the `pcoip-register-host.ps1` script:

```
"C:\Program Files\Teradici\PCoIP Agent\pcoip-register-host.ps1" [-ProxyServer <String>] [-ProxyPort <String>] -RegistrationCode <String>
[<CommonParameters>]
```

Where:

- `-RegistrationCode` sets the registration code to use.
- `-ProxyServer` sets the address of your proxy server, if you have one.
- `-ProxyPort` sets the port number of your proxy server, if you have one.

Important: PowerShell execution policy

PowerShell scripts must be permitted to run on your machine. If your execution policy prevents `pcoip-register-host.ps1` from running, you can temporarily enable PowerShell script execution with the following command:

```
powershell.exe -InputFormat None -ExecutionPolicy Bypass -Command .\pcoip-register-host.ps1
```

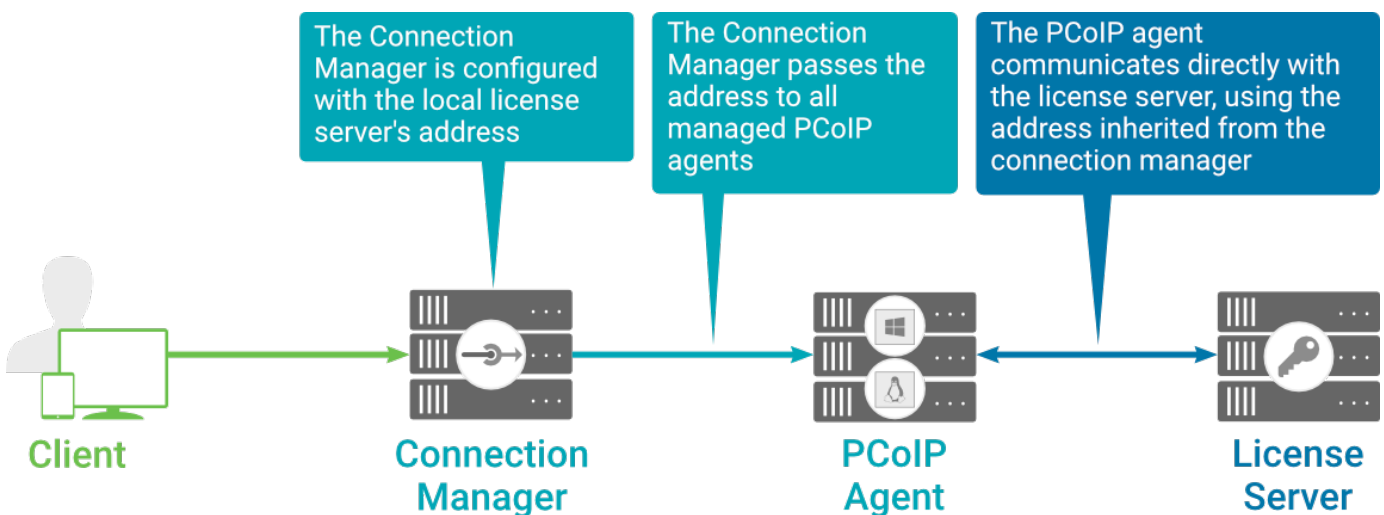
Licensing PCoIP Agents With a Local License Server

In deployments where PCoIP agents cannot access the internet, or where cloud-based licensing is not permitted or desired, a local PCoIP License Server can be used instead. The PCoIP License Server manages PCoIP session licenses within your private environment.

Configuring PCoIP agents to use a local license server is done in one of two ways, depending on whether your deployment uses a PCoIP Connection Manager, or whether your PCoIP clients connect directly to PCoIP agents.

Brokered Environment Licensing

In *brokered* deployments, the license server address is configured in the Connection Manager, which passes it through to its managed PCoIP agents.



When using a Connection Manager, the license server address is only configured once no matter how many PCoIP agents are behind the Connection Manager.

To set the License Server URL in the Connection Manager:

1. On the Connection Manager machine, use a text editor to open `/etc/ConnectionManager.conf`.
2. Set the `LicenseServerAddress` parameter with the address of your local license server:
 - `http:// {license-server-address} : {port} /request`
3. Save and close the configuration file.

4. Restart the Connection Manager.

Verifying Your Brokered Licensing Configuration

To verify your system's licensing configuration, run the `pcoip-validate-license.ps1` PowerShell script on the PCoIP Agent machine. The script will ping the license server and attempt to retrieve information on an available license:

```
C:\ProgramFiles\Teradici\PCoIPAgent\pcoip-validate-license.ps1 -
LicenseServerUrl <license-server-address> [-ThroughProxyServer <proxy-server-
address>] [-ProxyPort <proxy port>]
```

Where `<license-server-address>` is the address of the license server to ping, formatted as `http:// {license-server-address} : {port} /request`

If the license server is behind a proxy server, provide the proxy information via the `-ThroughProxyServer` and `-ProxyPort` parameters.

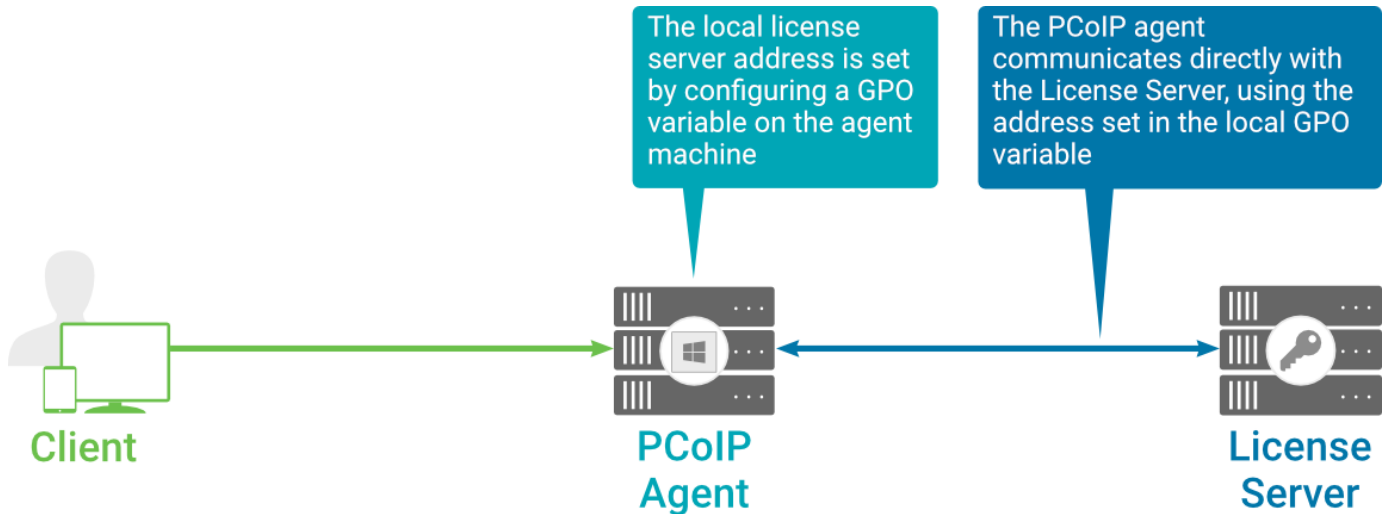
If successful, the response will show that a valid license was found on the license server, and its expiration date.

If the connection is unsuccessful, investigate the following possibilities:

- The license server address is incorrect, or formatted incorrectly.
- The license server is inaccessible.
- There are no available licenses on the license server. `pcoip-validate-license.ps1` will only return a positive response if there is at least one available session license.
- If you have only one license on the license server and run `pcoip-validate-license.ps1` from a PCoIP session, the command will fail because you are currently using the single license. In this scenario, disconnect your PCoIP session and try again from an RDP session instead.

Unbrokered Environment Licensing

In direct, or unbrokered, deployments, each PCoIP agent is configured with the license server address via a GPO variable. When a client initiates a new PCoIP session, the PCoIP agent uses its local configuration to communicate with the license server.



Local license validation using a PCoIP Windows agent and a direct (unbrokered) connection

Each PCoIP agent in your environment must be individually configured with the license server's URL.

To configure the License Server URL on the PCoIP Agent machine:

1. Open the Local Group Policy Editor on the agent machine:
 - a. Press + **r** to open the run dialog
 - b. type **gpedit.msc** and press **Enter**.
2. Navigate to *Computer Configuration > Administrative Templates > PCoIP Session Variables > Overridable Administrative Defaults*.
The list of configurable PCoIP settings will appear in the right panel.
3. Open the **Configure the license server URL** variable.
4. Select the **Enabled** option.
5. Enter the License Server URL in the option field and click **OK**. The URL format is **http:// {license-server-address} : {port} /request**.

Verifying Your Unbrokered Licensing Configuration

To verify your system's licensing configuration, run the `pcoip-validate-license.ps1` PowerShell script. The script will ping the license server using the local GPO configuration and attempt to retrieve information on an available license:

```
C:\ProgramFiles\Teradici\PCoIPAgent\pcoip-validate-license.ps1
```

If successful, the response will show that a valid license was found on the license server, and its expiration date.

If the connection is unsuccessful, investigate the following possibilities:

- The license server address is incorrect, or formatted incorrectly.
- The license server is inaccessible.
- There are no available licenses on the license server. `pcoip-validate-license.ps1` will only return a positive response if there is at least one available session license.
- If you have only one license on the license server and run `pcoip-validate-license.ps1` from a PCoIP session, the command will fail because you are currently using the single license. In this scenario, disconnect your PCoIP session and try again from an RDP session instead.

Updating the Graphics Agent for Windows


You can update the agent software from the PCoIP Control panel, or by executing a new installer file on the host machine. You do not need to uninstall the old version before installing the new version.

Note: PCoIP Control Panel requires Internet access

Updating software via the PCoIP Control Panel requires Internet access. If your host machine cannot connect to the Internet, copy the new installer file onto the host machine and run it in place.

Installing an update from the PCoIP Control Panel

To install an update from the PCoIP Control Panel:

1. Connect to the machine using RDP.
2. Click  in the Windows system tray and select Updates from the context menu to open the PCoIP Control Panel. The control panel appears with the *Updates* tab selected.
3. Click **Check for Updates**.
4. If an update is available, install it by clicking **Install Updates** and then clicking **OK**.

Important: Updating from remote sessions

If you are updating from a remote session, the session must be disconnected to complete the update. You will be prompted to do this in an alert; click OK to disconnect your session.

Your PCoIP session will disconnect and the installation will continue on the host machine. While the installation is in progress, you will be unable to connect remotely.

Installing an Update Manually

To install an update manually:

To manually update the software, copy the new installer file onto the host machine and run it in place, either [via RDP](#) or [silently via command line](#).

Uninstalling the Graphics Agent for Windows

You can uninstall the Graphics Agent for Windows using the Windows Control Panel, or by using the uninstall utility in the agent's installation directory.

Reboot is required

The Windows desktop must be rebooted to complete uninstallation; you can choose to do that now, or do it yourself later. Some features may not work until the system is restarted.

Uninstalling via the Windows Control Panel

To uninstall the PCoIP Graphics Agent for Windows using the Windows Control Panel:

1. Disconnect any active PCoIP sessions on the host machine.
2. Log in as an administrator to the desktop via RDP.
3. In *Control Panel > Programs*, select **Uninstall a program**.
4. Select the Agent from the list and click Uninstall.

Uninstalling via the Uninstall Utility

To uninstall the PCoIP Graphics Agent for Windows from Windows:

1. Disconnect any active PCoIP sessions on the host machine.
2. Log in as an administrator to the remote host via RDP **or** via the hypervisor console.
3. Open a Windows Explorer window and navigate to the directory where the Graphics Agent for Windows is installed (by default, **C:\Program Files\Teradici\PCoIP Agent**).
4. Double-click **uninst** and follow the prompts.

Configuring the PCoIP Agent

You can configure the PCoIP agent, and optimize PCoIP protocol behavior for local network conditions, by adjusting Windows GPO variables.

The variables are in **adm**x template files, which are imported automatically by the agent installer.

Template files on domain controllers are not automatically installed

Template files are not automatically installed on domain controllers. You must [manually import the files](#) into the domain controller's Group Policy Editor.

Modifying PCoIP GPO Variables

All of the PCoIP settings can be configured using this procedure. The configurable settings are described in the [following section](#).

To modify a PCoIP session variable:

1. Open the Local Group Policy Editor on the agent machine:
 - a. Press + **r** to open the run dialog
 - b. type **gpedit.msc** and press **Enter**.
2. In the left pane, navigate to **Administrative Templates** and then to **PCoIP Session Variables**.
The variables you can configure appear in the right pane.
3. Double-click the PCoIP variable you want to configure to open the variable's configuration window, then:
 - a. Select **Enabled** to enable the PCoIP setting.
 - b. Configure any parameters that are available for the setting.
 - c. Click **OK** to close the variable's configuration window.
4. Repeat step 3 until all variables have been set.
5. Close the Local Group Policy Editor.

 **Note: Changes require a new PColP connection**

Changes take effect on the next PColP connection to the desktop.

Configurable Settings

The following settings can be configured on the Graphics Agent for Windows. Refer to [Configuring the PColP agent](#) to understand how to modify these settings.

Build-to-lossless

Directive	Options	Default
Enable build to lossless	Checked (on), Unchecked (off)	Off

This setting takes effect immediately. Specifies whether to turn the build-to-lossless feature of the PColP protocol off or on; this feature is turned off by default.

If this setting is Disabled or Not Configured then the build-to-lossless feature is turned off and images and other desktop content may never build to a lossless state. In network environments with constrained bandwidth, turning off the build-to-lossless feature can provide bandwidth savings. If this setting is Enabled then the build-to-lossless feature is turned on; this is recommended for environments that require images and desktop content to be built to a lossless state.

Clipboard redirection

Directive	Options	Default
Server clipboard state	Disabled in both directions Enabled in both directions Enabled client to agent only Enabled agent to client only	—

This setting takes effect when you start the next session. Determines the direction in which clipboard redirection is allowed. You can select one of these values:

- Disabled in both directions
- Enabled in both directions (default setting)
- Enabled client to agent only (That is, allow copy and paste only from the client system to the host desktop.)
- Enabled agent to client only (That is, allow copy and paste only from the host desktop to the client system.)

Clipboard redirection is implemented as a virtual channel. If virtual channels are disabled, clipboard redirection does not function.

When this setting is disabled or not configured, the default value is Enabled in both directions.

Connection addresses

Directive	Options	Default
Connection address	string (<i>up to 511 characters</i>)	–
Client connection address	string (<i>up to 511 characters</i>)	–

This setting takes effect when you start the next session. Configuring this allows you to control the IPv4 or IPv6 address used by the agent or client in PCoIP sessions.

'Connection Address' controls the IP address used by the agent for the PCoIP session.

'Client Connection Address' controls the IP address the client is told to use when establishing the PCoIP session.

Please note that neither of these values should need to be set under normal circumstances.

Deskside mode

Directive	Options	Default
Enable deskside	Checked (on), Unchecked (off)	Off
Enable deskside screen blanking	Checked (on), Unchecked (off)	On
Enable deskside input blocking	Checked (on), Unchecked (off)	On
Enable deskside local display restoration	Checked (on), Unchecked (off)	On

This setting takes effect when you start the next session. When this setting is disabled or not configured Deskside mode will not be used. It should only be configured for Workstation PCoIP Graphics agents that have displays and input devices physically connected. It supersedes the previous "restoration of locally connected displays" setting, in order to maintain previous behaviour enable this policy and only enable the "Local display restoration at end of session" option listed below.

Enabling Deskside mode allows the following additional features to be configured:

- Screen blanking When enabled, where possible, any displays plugged into the agent machine will be blanked during the session, and unblanked at the end of session.
- Input blocking When enabled mouse and keyboard access from devices physically connected to the agent machine will be blocked. Input from physically connected devices will be restored at end of session.
- Local display restoration at end of session When enabled displays will be restored to their pre-session state when the session ends.

Enable Disclaimer Authentication

Directive	Options	Default
Enable disclaimer auth	Checked (on), Unchecked (off)	Off

This setting takes effect when you start the next session. When this setting is enabled, users connecting via direct connect will be presented a disclaimer prior to user authentication. If the disclaimer is rejected, the user will not be able to connect.

Disclaimer files must be placed in %PROGRAMDATA%\Teradici\PCoIPAgent\disclaimers. Files must be named according to the locale, e.g. en_US.txt for en_US, ko_KR.txt for ko_KR, etc. If a file matching the negotiated locale is not present, en_US will be used as a fallback. If disclaimer text cannot be found, an blank disclaimer will be presented.

Enable the PCoIP control panel

Directive	Options	Default
Control panel	Checked (on), Unchecked (off)	—

This setting takes effect when the agent is restarted. This policy enables or disables the PCoIP control panel. When enabled, the PCoIP control panel will be running, and when disabled the control panel will not be running. When not configured, will run by default.

Enable/disable USB in the PCoIP session

Directive	Options	Default
Enable usb	Checked (on), Unchecked (off)	On

This setting takes effect when you start the next session. Determines whether USB support is enabled in PCoIP sessions. When this setting is not configured, USB is enabled by default. By default all devices are supported unless restrictions are configured through the USB device rules setting.

Enable/disable audio in the PCoIP session

Directive	Options	Default
Enable audio	Checked (on), Unchecked (off)	On

This setting takes effect when you start the next session. Determines whether audio is enabled in PCoIP sessions. Both endpoints must have audio enabled. When this setting is enabled, PCoIP audio is allowed. When it is disabled, PCoIP audio is disabled. When this setting is not configured, audio is enabled by default.

Enable/disable relative mouse support

Directive	Options	Default
Enable relative mouse	Checked (on), Unchecked (off)	On

This setting takes effect when you start the next session. It determines whether relative mouse coordinates may be used, when appropriate, during the PCoIP session. By default, this setting is enabled.

Enable/disable trusted domain checks

Directive	Options	Default
Enable trusted domain check	Checked (on), Unchecked (off)	Off

This setting takes effect when you start the next session. Its purpose is to allow additional security checking of the domain provided during user authentication. By default, this setting is disabled, meaning provided domains are not verified to be trusted. When enabled, the domain used during user authentication is verified to be trusted.

Hide local cursor

Directive	Options	Default
<code>Disable locally rendered cursor</code>	Checked (on), Unchecked (off)	Off

This setting takes effect immediately. When this setting is enabled the local cursor on the client will be hidden. This may resolve duplicate cursor issues if there is a host rendered cursor within the host environment but may also result in no visible cursor. With this setting enabled there may be delays in mouse movements due to network latency and video processing times. By default, this setting is disabled, meaning that local cursors will be used, providing the most responsive user experience.

License server URL

Directive	Options	Default
<code>License server path</code>	string (<i>up to 511 characters</i>)	—

This setting takes effect when you start the next session. This policy sets the license server path. Enter the license server path in 'https://address:port/request' or 'http://address:port/request' format.

Maximum PCoIP session bandwidth

Directive	Range	Increment	Default
<code>Max link rate</code>	104 – 900000	100	900000

This setting takes effect when you start the next session. Specifies the maximum bandwidth, in kilobits per second, in a PCoIP session. The bandwidth includes all imaging, audio, virtual channel, USB, and control PCoIP traffic.

Set this value based on the overall capacity of the link to which your endpoint is connected, taking into consideration the number of expected concurrent PCoIP sessions. For example, with a single user VDI configuration (e.g. a single PCoIP session) that connects through a 4Mbit/s Internet connection, set this value to 4Mbit (or 10% less than this value to leave some allowance for other network traffic).

Setting this value prevents the agent from attempting to transmit at a higher rate than the link capacity, which would cause excessive packet loss and a poorer user experience. This value is symmetric. It forces the client and agent to use the lower of the two values that are set on the client and agent side. For example, setting a 4Mbit/s maximum bandwidth forces the agent to transmit at a lower rate, even though the setting is configured on the client.

When this setting is disabled or not configured on an endpoint, the endpoint imposes no bandwidth constraints. When this setting is configured, the setting is used as the endpoint's maximum bandwidth constraint in kilobits per second.

The default value when this setting is not configured is 900000 kilobits per second.

This setting applies to the agent and client. If the two endpoints have different settings, the lower value is used.

PCoIP Security Certificate Settings

Directive	Options	Default
SSL cert type	From certificate storage Generate a unique self-signed certificate From certificate storage if possible, otherwise generate	—
Cert store name	string (<i>up to 255 characters</i>)	MY
SSL cert min key length	1024 bits 2048 bits 3072 bits 4096 bits	—

This setting takes effect when you start the next session. This policy dictates the handling of certificates.

A certificate is used to secure PCoIP related communications. The way PCoIP components choose a certificate is based on the certificate type, the name of the Certificate Store (referred to as "certificate storage") and the key length. Without a certificate being generated or selected, a PCoIP Session cannot be established.

Depending on the value chosen for the option, 'How the PCoIP agent chooses the certificate...' and the availability of appropriate certificates, PCoIP components may acquire a CA signed certificate from the Windows Certificate Store or generate an in-memory self-signed certificate.

Name the Windows Certificate Store where the CA signed certificate is stored. The default is the "MY" store (shown as "Personal" in Management Console). Set the friendly name of the CA signed certificate to be PCoIP, in the Windows Certificate Store.

CA certificate(s) must be stored in the "Trusted Root Certification Authorities" store (sometimes referred to as "ROOT").

Select a minimum key length (in bits) for choosing a CA signed certificate from the Windows Certificate Store. Longer length certificates will require more computing resources and may reduce performance, but will increase security. Shorter length certificates will provide better performance at the cost of lower security.

Note: Please refer to Teradici documentation for instructions on creating and deploying certificates.

PCoIP Security Settings

Directive	Options	Default
TLS security mode	Maximum Compatibility	—
TLS cipher blacklist	string (<i>up to 1023 characters</i>)	—
Data encryption ciphers	AES-256-GCM, AES-128-GCM (default, AES-256-GCM preferred) AES-256-GCM only AES-128-GCM only	—

This setting takes effect when you start the next session. Controls the cryptographic cipher suites and encryption ciphers used by PCoIP endpoints.

The endpoints negotiate the actual cryptographic cipher suites and encryption ciphers based on the settings configured here. Newer versions of TLS and stronger cipher suites will be preferred during negotiation between endpoints.

If this setting is not configured or disabled, the TLS Security Mode will be set to Maximum Compatibility, and the PCoIP Data Encryption Ciphers will be set to AES-256-GCM, AES-128-GCM.

TLS Security Mode

Maximum Compatibility offers TLS 1.2 and TLS 1.3, and a range of cipher suites including those that support Perfect Forward Secrecy (PFS) and SHA-1. Supported cipher suites:

- TLS_ECDHE_RSA_WITH_AES_256_GCM_SHA384
- TLS_ECDHE_RSA_WITH_AES_128_GCM_SHA256
- TLS_ECDHE_RSA_WITH_AES_256_CBC_SHA384
- TLS_ECDHE_RSA_WITH_AES_128_CBC_SHA256
- TLS_RSA_WITH_AES_256_GCM_SHA384
- TLS_RSA_WITH_AES_128_GCM_SHA256
- TLS_RSA_WITH_AES_256_CBC_SHA256
- TLS_RSA_WITH_AES_128_CBC_SHA256
- TLS_RSA_WITH_AES_256_CBC_SHA
- TLS_RSA_WITH_AES_128_CBC_SHA

Blacklisted Cipher Suites

Provides the ability to block specific cipher suites from being offered during negotiation. Must be entered as a semi-colon separated list of cipher suites.

PCoIP Data Encryption Ciphers

Encryption ciphers used for PCoIP UDP data encryption. "AES-256-GCM, AES-128-GCM" is the default setting. AES-256-GCM will get negotiated if the client supports it, otherwise, AES-128-GCM will get negotiated.

PCoIP USB allowed and unallowed device rules

Directive	Options	Default
Usb auth table	23XXXXXX 2203XXXX	23XXXXXX
Usb unauth table	2203XXXX	—

This setting specifies the USB devices that are authorized and unauthorized for use in a PCoIP session. Any changes to this setting only takes effect after you start the next session.

If this setting is left Not Configured or set to Disabled, then the default behavior is all devices are allowed.

When this setting is enabled, only devices listed in the USB authorization table are permitted in PCoIP sessions, provided they are not subsequently excluded by an entry in the USB unauthorization table.

If this setting is enabled with an empty USB authorization string, this means that no USB devices are allowed. An empty USB unauthorization string means that only USB devices in the authorization list are allowed.

You can define a maximum of 10 USB authorization rules and a maximum of 10 USB unauthorization rules. Separate multiple rules with the vertical bar (|) character.

Each rule can be a combination of a Vendor ID (VID) and a Product ID (PID), or a rule can describe a class of USB devices. A class rule can allow or disallow an entire device class, a single subclass or a protocol within a subclass.

The format of a combination VID/PID rule is 1xxxxyyy, where xxxx is the VID in hexadecimal format and yyyy is the PID in hexadecimal format. For example, the rule to allow or block a device with VID=0x1a2b and PID=0x3c4d is 11a2b3c4d.

For class rules, use one of the following formats:

Allow All USB Format: 23XXXXXX Allow All Devices Example: 23XXXXXX

Allow USB Format: 22classXXXX Class Example: 22aaXXXX

Allow a Specific Format: 21class-subclassXX Subclass Example: 21aabbXX

Allow a Specific Format: 20class-subclass-protocol Protocol Example: 20aabbcc

For example, the USB authorization string to allow USB HID (mouse and keyboard) devices (class ID 0x03) and mass storage devices (class ID 0x08) is 2203XXXX|2208XXXX. The USB unauthorization string to disallow USB Mass Storage devices (class ID 0x08) is 2208XXXX.

PCoIP Ultra

Directive	Options	Range	Increment	Default
Ultra	Disabled CPU Offload GPU Offload Automatic Offload			—
Ultra offload mpps		1 – 40	1	10

This setting takes effect when you start the next session. When this setting is disabled or not configured then PCoIP Ultra will not be used.

- PCoIP Ultra CPU Offload - these optimizations require CPU support for the AVX2 instruction set on both the remote host and client and are not compatible with the PCoIP Zero client. CPU Offload is recommended for 4K UHD resolutions with video playback requirements of 30 fps (or more) and highest image quality / color accuracy.
- PCoIP Ultra GPU Offload - these optimizations require an NVIDIA graphics card on the remote host capable of NVENC. GPU Offload is recommended when minimal CPU impact of pixel encoding is desired.
- PCoIP Ultra Auto Offload - enabling this setting allows PCoIP to automatically switch between CPU and GPU Offload modes; CPU Offload is used by default to provide the best image fidelity, GPU Offload is used during periods of high display activity to provide improved frame rates and bandwidth optimization. This setting is only effective if the remote host and client endpoints are capable of both CPU and GPU Offload.

The PCoIP Ultra Offload MPPS sets the Megapixels Per Second (MPPS) transition rate between PCoIP Ultra CPU Offload and PCoIP Ultra GPU Offload. Under Auto-Offload, PCoIP Ultra uses CPU Offload at lower pixel rates and switches to GPU Offload at the Offload MPPS. Increasing this value results in PCoIP Ultra transitioning to GPU Offload at a higher pixel rate and decreasing this value results in the transition at a lower pixel rate. The default PCoIP Ultra Offload MPPS is set to 10.

PCoIP event log verbosity

Directive	Range	Increment	Default
Event filter mode	0 – 3	1	2

This setting takes effect immediately. This policy enables the configuration of the PCoIP event log verbosity ranging from 0 (least verbose) to 3 (most verbose).

When this policy is Disabled or Not Configured, the default event log verbosity setting is 2. When this policy is Configured, the setting controls the verbosity level as described above.

PCoIP image quality levels

Directive	Options	Range	Increment	Default
Minimum image quality		30 – 100	10	40
Maximum initial image quality		30 – 100	10	80
Frame rate vs quality factor		0 – 100	10	50
Maximum frame rate		0 – 60	1	–
Yuv chroma subsampling	4:4:4 4:2:0			–
Use client img settings	Checked (on), Unchecked (off)			Off

This setting takes effect immediately. Controls how PCoIP renders images during periods of network congestion. The Minimum Image Quality, Maximum Initial Image Quality, and Maximum Frame Rate values interoperate to provide fine control in network-bandwidth constrained environments.

Use the Minimum Image Quality value to balance image quality and frame rate for limited-bandwidth scenarios. You can specify a value between 30 and 100. The default value is 40. A lower value allows higher frame-rates, but with a potentially lower quality display. A higher value provides higher image quality, but with potentially lower frame rates when network bandwidth is constrained. When network bandwidth is not constrained, PCoIP maintains maximum quality regardless of this value.

Use the Maximum Initial Image Quality value to reduce the network bandwidth peaks required by PCoIP by limiting the initial quality of the changed regions of the display image. You can specify a value between 30 and 100. The default value is 80. A lower value reduces the image quality of content changes and decreases peak bandwidth requirements. A higher value increases the image quality of content changes and increases peak bandwidth requirements. Unchanged regions of the image progressively build to a lossless (perfect) quality regardless of this value. A value of 80 or lower best utilizes the available bandwidth.

The Minimum Image Quality value cannot exceed the Maximum Initial Image Quality value.

Use the Frame Rate vs Image Quality value to favor image sharpness over smooth motion during a PCoIP session when network bandwidth is limited. Lower values favor smoothness, higher values favor sharpness of image.

Use the Maximum Frame Rate value to manage the average bandwidth consumed per user by limiting the number of screen updates per second. You can specify a value between 1 and 60 frames per second. A higher value can use more bandwidth but provides less jitter, which allows smoother transitions in changing images such as video. A lower value uses less bandwidth but results in more jitter.

YUV chroma subsampling is set to 4:4:4 by default for maximum image quality. Setting YUV chroma subsampling to 4:2:0 is only supported in combination with PCoIP Ultra GPU optimization. This setting will enable chroma subsampling to further compress the imaging to reduce bandwidth usage at the cost of reduced color accuracy. Please note: 4:4:4 subsampling with

PCoIP Ultra GPU optimization is GPU dependent and is not supported by all GPUs, in this case PCoIP will fallback to 4:2:0 subsampling. Please see our support site for further details.

Set the 'Use image settings from zero client' when you want to use the 'Minimum Image Quality', 'Maximum Initial Image Quality', 'Maximum Frame Rate', 'Disable Build to Lossless' values from the client instead of the host. Currently, only Zero Client Firmware 3.5 and above support these settings on the client side.

These image quality values apply to the soft host only and have no effect on a soft client.

When this setting is disabled or not configured, the default values are used.

PCoIP log retention

Directive	Range	Increment	Default
Max log retention days	7 – 100	1	30

This setting takes effect immediately. This policy sets the retention period (in days) for PCoIP logs that have been archived. PCoIP log files are periodically archived to %PROGRAMDATA%\Teradici\logs\ROTATE. When this policy is Disabled or Not Configured, archived logs that have not been modified in 30 days are removed. When this policy is Configured, the setting controls the retention period as described above.

When configuring a retention period PowerShell 4.0 or newer is required. If an older PowerShell version is installed then the default retention period will be used, regardless of the configured setting.

PCoIP session MTU

Directive	Range	Increment	Default
MTU size	500 – 1500	1	1200

This setting takes effect when you start the next session. Specifies the Maximum Transmission Unit (MTU) size for UDP packets for a PCoIP session.

The MTU size includes IP and UDP packet headers. TCP uses the standard MTU discovery mechanism to set MTU and is not affected by this setting. The maximum MTU size is 1500 bytes. The minimum MTU size is 500 bytes. The default value is 1200 bytes.

Typically, you do not have to change the MTU size. Change this value if you have an unusual network setup that causes PCoIP packet fragmentation.

This setting applies to the agent and client. If the two endpoints have different MTU size settings, the lowest size is used.

If this setting is disabled or not configured, the client uses the default value in the negotiation with the agent.

PCoIP session SSO access control

Directive	Options	Default
Single sign on	Checked (on), Unchecked (off)	—

This setting takes effect when you start the next session. Enable/Disable the single sign on access control to a PCoIP session.

When this policy is Not Configured, the single sign on access control is enabled.

PCoIP session audio bandwidth limit

Directive	Range	Increment	Default
Audio bandwidth limit	0 – 100000	1	512

This setting takes effect immediately. Specifies the maximum audio bandwidth that can be used for audio output (sound playback) from the virtual desktop to the client in a PCoIP session. Note that the network transport overhead can add an additional 20-40% bandwidth to this number.

This setting does not apply to audio input (recording) from the client to the virtual desktop. This setting also has no effect on USB audio devices which are connected to the virtual desktop through USB redirection.

Audio processing monitors the bandwidth needed for audio and selects the audio compression algorithm that provides the best quality possible, without exceeding the bandwidth limit:

- 512 kbit/s or higher - 7.1 surround, high-quality, compressed audio
- 384 kbit/s or higher - 5.1 surround, high-quality, compressed audio
- 256 kbit/s or higher - stereo, high-quality, compressed audio
- 48 kbit/s to 255 kbit/s - stereo audio ranging between FM radio quality down to AM radio quality
- 32 kbit/s to 47 kbit/s - monaural AM radio or phone call quality
- Below 32 kbit/s - results in no audio playback

If this setting is disabled or not configured, a default audio bandwidth limit of 512 kbit/s is configured to constrain the audio compression algorithm selected. If the setting is configured, the value is measured in kilobits per second (kbit/s), with a default audio bandwidth limit of 512 kbit/s.

Note that zero clients on older firmware have less efficient audio compression algorithms that may require setting this limit higher to achieve the same audio quality or upgrading the firmware.

PCoIP session bandwidth floor

Directive	Range	Increment	Default
Device bandwidth floor	0 – 100000	1	—

This setting takes effect immediately. Specifies a lower limit, in kilobits per second, for the bandwidth that is reserved by the PCoIP session.

This setting configures the minimum expected bandwidth transmission rate for the endpoint. When you use this setting to reserve bandwidth for an endpoint, the session does not have to wait for bandwidth to become available, which improves session responsiveness.

Make sure that you do not over-subscribe the total reserved bandwidth for all endpoints. Make sure that the sum of bandwidth floors for all connections in your configuration does not exceed the network capability.

The default value is 0, which means that no minimum bandwidth is reserved. When this setting is disabled or not configured, no minimum bandwidth is reserved.

This setting applies to the agent and client, but the setting only affects the endpoint on which it is configured.

PCoIP statistics interval

Directive	Range	Increment	Default
<code>Server statistics interval seconds</code>	0 – 65535	1	–

This setting takes effect immediately. Configuring this allows you to set an interval in seconds for logging performance statistics to the PCoIP server log. When not configured, logging is disabled by default.

PCoIP transport header

Directive	Options	Default
<code>Transport session priority</code>	High Priority Medium Priority (default) Low Priority Undefined Priority	–

This setting takes effect when you start the next session. Configures the PCoIP transport header.

PCoIP transport header is a 32-bit long header which is added to all PCoIP UDP packets (only if the transport header is enabled/supported by both sides). PCoIP transport header allows network devices to make better prioritization/Qos decisions when dealing with network congestions. The transport header is enabled by default.

The transport session priority determines the PCoIP session priority reported in the PCoIP Transport Header. Network devices make better prioritization/Qos decisions based on the specified transport session priority. The transport session priority value is negotiated by the PCoIP agent and client. If agent has specified a transport session priority value (high, medium, or low), then the session uses the agent specified session priority. If only the client has specified a transport session priority (high, medium, or low), then the session uses the client specified session priority. If neither agent nor client has specified a transport session priority (or specified 'undefined priority'), then the session uses/defaults to the medium session priority.

PCoIP virtual channels

Directive	Options	Default
<code>Enable vchan</code>	Enable all virtual channels other than those in the list Disable all virtual channels other than those in the list	—
<code>Vchan list</code>	string (<i>up to 255 characters</i>)	—

This setting takes effect when you start the next session. Specifies the virtual channels that can or cannot operate over a PCoIP session.

There are two modes of operation:

- Enable all virtual channels except for <list> (default setting)
- Disable all virtual channels except for <list>

When specifying which virtual channels to include or not include in the list, the following rules apply:

- An empty list is allowed
- Multiple virtual channel names in the list must be separated by the vertical bar (|) character. For example: channelA|channelB
- Vertical bar or backslash (\) characters in virtual channel names must be preceded by a backslash. For example: the channel name "awk|ward\channel" must be specified as "awk\ward\channel" (without the double quotes)
- A maximum of 15 virtual channels are allowed in a single PCoIP session

The virtual channel must be enabled on both agent and client for it to be used.

Primary display resolution

Directive	Options	Default
Host side primary display topology	1920x1200 1920x1080 1680x1050 1680x1024 1600x1200 1600x1024 1600x900 1440x1050 1440x900 1280x768 1280x1024 1280x800 1280x720 1024x768 800x600 640x480	1920x1080

This setting takes effect when you start the next session. Configuring this value will override the display resolution of the primary monitor for connections to the host. The value applies only to the PCoIP Standard Agent for Windows.

Proxy Access to a remote License Server

Directive	Options	Range	Increment	Default
License proxy server	string (<i>up to 511 characters</i>)			—
License proxy port		0 – 65535	1	—

This setting takes effect when you start the next session. If a proxy is required to access a local License Server or the Cloud License Server, enter those parameters here. These parameters are loaded only during agent startup.

Remote printing

Directive	Options	Default
Remote printing enabled	Basic and Advanced printing for Windows clients Basic printing Printing disabled	—
Enable default printer	Checked (on), Unchecked (off)	—

This setting takes effect when you start the next session, and applies on the host only. Basic Remote printing will only offer limited printing but has the advantage of using a generic printer driver on the host side. This ensures compatible printing but does not offer all features of the printer.

Advanced remote printing for Windows clients requires installation of the matching printer driver on the host side of the solution. In some cases the matching printer driver cannot be found for the host OS and/or the printer driver is not compatible with the printer. In those cases changing the printer setting to "Basic" should allow printing to those printers.

Remote printing is implemented as a virtual channel. If virtual channels are disabled, remote printing does not function.

When this setting is disabled or not configured, the default value of Basic remote printing is enabled.

The default value of unchecked for 'Automatically set default printer' will not change the default printer on the host when the client connects; the default printer, if set on the host, will be a host local/network printer. When checked, the default printer on the host will match the client's default printer within a session and will be reset to a host local/network printer upon client disconnection. This can allow for a user experience where printing can naturally occur close to the location of the client computer.

Session Automatic Reconnection Policy

Directive	Range	Increment	Default
Session retry timeout	0 – 120	1	20

This setting takes effect when you start the next session. This policy configures the automatic reconnection period, that is the amount of time a PCoIP Client and Server will attempt to reconnect an interrupted session without requiring the user to re-enter their logon credentials.

A session may be interrupted through network loss, for instance through pulling a network cable, disabling a network interface or moving away from a WiFi hotspot. In the case of portable computing devices closing a laptop lid or similar actions have the same effect. By default, when network connectivity returns within the specified time period, the session will be restored with no further user action being required.

If this setting is disabled or not configured, the default reconnect period is 20 minutes.

Setting this value to 0 disables the session automatic reconnection feature but allows for session reconnection as a result of intermittent short term network loss (between 30 and 60 seconds).

Timezone redirection

Directive	Options	Default
Enable timezone redirect	Checked (on), Unchecked (off)	On

This setting takes effect when you start the next session. Configuring this allows you to enable or disable timezone redirection. When not configured, timezone redirection is enabled by default.

User collaboration

Directive	Options	Default
Enable collaboration	Checked (on), Unchecked (off)	Off

This setting takes effect when the agent is restarted. This policy enables or disables user collaboration. When not configured, user collaboration is disabled by default.

UDP Port for collaboration

Directive	Range	Increment	Default
<code>UDP port for collaborator session</code>	1 - 65535	1	64172

This is the default UDP port used for collaborator sessions. When a different port is used, ensure that firewall rules are adjusted so that PCoIP traffic can go through the new port.

Making a Connection from a PCoIP Client

Once you've installed and configured your Graphics Agent for Windows, you're ready to accept incoming connections from remote **PCoIP Clients**. PCoIP clients are remote endpoint devices available in as software or firmware and make secure PCoIP connections to the remote desktop through the installed Graphics Agent for Windows.

For more information about PCoIP client connectivity requirements and usage instructions, see the following documentation:

- Software clients:
 - [Teradici PCoIP Software Client for Windows](#)
 - [Teradici PCoIP Software Client for macOS](#)
 - [Teradici PCoIP Software Client for Linux](#)
- Mobile Clients:
 - [Teradici PCoIP Mobile Client for iOS](#)
 - [Teradici PCoIP Mobile Client for Android](#)
 - [Teradici PCoIP Mobile Client for Chromebooks](#)
- Zero clients:
 - [Teradici Tera2 PCoIP Zero Client](#)

PCoIP Agent Deployment and Client Connectivity Requirements

PCoIP clients can connect to your desktops hosted in proof-of-concept, cloud, or datacenter deployments. Requirements and network security levels will vary depending on your deployment type. See [Supported PCoIP Architectures](#) for each deployment's components and requirements.

Managing Client Connections

In most cases, PCoIP clients connect to PCoIP agents through a **connection broker**. The broker is responsible for matching users to their available desktops, and then establishing the PCoIP session with their selected resource.

PCoIP agents do not need to be configured to use these brokering services. All relevant configuration is done at the broker, which then communicates with the agent.

Brokering Options

There are several ways you can manage client connections to remote desktops

Direct Connections

In direct connection scenarios—where a broker is not involved—the PCoIP agent acts as its own broker. In these cases, a client user will provide the IP address or FQDN of the agent machine to their client, and the connection is made securely with no intermediate step.

Teradici Cloud Access Manager

Teradici [Cloud Access Manager](#) is a cloud-based service available as part of Cloud Access Software that centrally manages PCoIP deployments. It enables highly scalable and cost-effective Cloud Access Software deployments by managing cloud compute costs and brokering PCoIP connections to remote Windows or Linux workstations.

Teradici PCoIP Connection Manager

The **Teradici PCoIP Connection Manager** is provided in a bundle with the **Teradici PCoIP Security Gateway**, and allows self-managed brokering services. For information about the Teradici PCoIP Connection Manager, including installation and configuration instructions, see the [Connection Manager and Security Gateway documentation](#).

Third-party Connection Brokers

Teradici PCoIP agents also support third-party connection brokers. For a current list of brokering partners, see [Teradici Technology Partners](#) on Teradici's website.

Security Certificates in PCoIP Agents

PCoIP requires a certificate to establish a session. By default, PCoIP agents generate a self-signed certificate that secures the PCoIP session. Each component in the PCoIP system can generate these self-signed certificates, which will automatically work together without requiring any configuration.

You can, if needed, create and deploy your own custom certificates instead of relying on Teradici's self-signed certificates. This section explains how to create and implement custom certificates.

Using Custom Security Certificates

You can use OpenSSL, Microsoft Certification Authority, or a public certificate authority (CA) of your choice to create your certificates. If you are not using OpenSSL, consult your certificate authority's documentation for instructions on creating certificates in a Windows Certificate Store-compatible format.

The procedures in this section use OpenSSL to generate certificates that will satisfy most security scanner tools when the root signing certificate is known to them.

Caution: Certificates are stored in the Windows Certificate Store

Certificates are stored in the Windows certificate store. If you have old certificates that are stored on the host, they should be deleted to avoid conflicts or confusion.

Custom Certificate Guidelines

If you choose to use your own certificates, follow these general guidelines:

- Save your root CA signing certificate in a safe place for deployment to clients.
- Back up private and public keys to secure locations.
- Never store files created when generating keys or certificates on network drives without password protection.

- Once certificates have been deployed to the Windows certificate store, the files they came from are no longer needed and can be deleted.
- Standard automatic tools, such as Automatic Certificate Enrollment and Group Policy, can be used for deploying automatically generated certificates. Both Automatic Certificate Enrollment and Group Policies are implemented through Active Directory. See MSDN Active Directory documentation for more information.

Pre-session Encryption Algorithms

Connections are negotiated using the following supported RSA cipher suites:

- TLS_ECDHE_RSA_WITH_AES_256_GCM_SHA384
- TLS_ECDHE_RSA_WITH_AES_128_GCM_SHA256
- TLS_ECDHE_RSA_WITH_AES_256_CBC_SHA384
- TLS_ECDHE_RSA_WITH_AES_128_CBC_SHA256
- TLS_RSA_WITH_AES_256_GCM_SHA384
- TLS_RSA_WITH_AES_128_GCM_SHA256
- TLS_RSA_WITH_AES_256_CBC_SHA256
- TLS_RSA_WITH_AES_128_CBC_SHA256
- TLS_RSA_WITH_AES_256_CBC_SHA
- TLS_RSA_WITH_AES_128_CBC_SHA

 **Note: Minimum SSL version**

These Max Compatibility security level cipher suites have a minimum required SSL version of TLS 1.2.

In-session Encryption Algorithms

Once a PCoIP session has been negotiated and the connection established, all PCoIP communications are secured by the AES-256-GCM session encryption algorithm, or AES-128-GCM if AES-256-GCM is unavailable. These settings can be [configured on the agent](#).

Creating And Installing Custom Certificates

This section describes how to replace Teradici's default certificates with your own custom certificates.

 **Note: These procedures use OpenSSL**

The procedures in this section use OpenSSL to create private keys, certificate signing requests, and certificates. To use OpenSSL, install Visual C++ 2008 Redistributables and Win32 OpenSSL Light v1.0.2g+.

For detailed information about OpenSSL, refer to [OpenSSL documentation](#).

To replace Teradici's default certificates with custom certificates:

1. [Install required OpenSSL components](#) on your system.
2. [Create the internal root CA certificate](#).
3. [Create a private key and certificate pair](#) for the PCoIP Agent.
4. [Configure the certificate mode](#) for each desktop.
5. [Install the internal root CA](#) in your PCoIP clients.

Installing OpenSSL Requirements

Install the following components on your Windows machine:

- Visual C++ 2008 Redistributables
- Win32 OpenSSL v1.0.2g Light (or later).

When prompted during OpenSSL installation, copy the OpenSSL DLLs to the OpenSSL binaries directory; for example, C:\OpenSSL-Win32\bin.

 **Note: Examples use the default installation directory**

The following examples assume the default OpenSSL installation directory: C:\OpenSSL-Win32.

Creating the Internal Root CA Certificate

This section shows how to create a root CA private key, how to use this key to self-sign and generate an internal root CA certificate, and how to add X.509 v3 extensions to a certificate that restrict how the certificate can be used.

Creating a Root CA Private Key

To create a root CA private key in RSA format:

1. Open a command prompt and navigate to the OpenSSL binaries directory (`c:\OpenSSL-Win32\bin`).
2. Type `openssl` and press `Enter` to launch OpenSSL.

 **Note: OpenSSL may need help finding the .cfg file**

If you see the following error, you will need to [set the OPENSSL_CONF](#) variable before proceeding.

```
WARNING: can't open config file: /usr/local/ssl/openssl.cnf
```


3. To create 3072-bit root RSA key named *rootCA.key*, use one of the following commands:
 - For an *unsecured* key, type:

```
genrsa -out rootCA.key 3072
```

- For a *password-protected* key, add the `-des3` argument:

```
genrsa -out rootCA.key -des3 3072
```

Password-protected keys require the password to be entered each time they are used.

 **Caution: Store your private root key in a safe location**

Anyone with access to your private root key can use it to generate certificates that your PCoIP clients will accept.

Setting the OPENSSL_CONF variable

If OpenSSL is unable to find its configuration file, you may need to set the OPENSSL_CONF variable.

To set the OPENSSL_CONF variable:

1. Exit OpenSSL.
2. Type the following command:

```
set OPENSSL_CONF=C:\OpenSSL-Win32\bin\openssl.cfg
```

3. Type `ssl` and press `Enter` to continue with the step you were performing when you saw the error.

Self-signing and Creating the Internal Root CA Certificate

Now that we have our [private key](#), we will use it to generate a self-signed X.509 root CA certificate called `rootCA.pem` that is valid for 1095 days (1095 days is three years, ignoring leap days).

To create the root CA certificate:

1. Type the following command. This example creates a certificate that is valid for 3 years (1095 days). Change the `-days` parameter to customize the certificate lifetime:

```
req -x509 -new -nodes -key rootCA.key -days 1095 -out rootCA.pem
```

An interactive script will run, which prompts you to enter values for several fields.

2. Follow the prompts to enter field values:

Field	Notes
Country Name	Optional. Use one of the ISO 3166-1 alpha-2 country codes.
State or Province Name	Optional

Field	Notes
Locality name	Optional
Organization Name	Optional
Common name	Required. Enter a name for your root CA (for example, certificates.mycompany.com)
Email address	Optional. Enter an administrative alias email if you use this field.

 **Note: Field values can be templated**

If you will be creating a lot of certificates, consider using a configuration file that contains global field values. See <http://www.openssl.org/docs> for more information.

Creating a Private Key and Certificate for the PCoIP Agent

For each PCoIP Agent instance, you will create three items:

- A private key file
- A certificate signing request (CSR)
- A certificate

You will also need an X.509 v3 extension file, which is used as an input when generating the workstation certificate.

 **Note: There are two different private keys**

The private key you create here is used by the PCoIP Agent to decrypt data. It is different from the internal root CA private key.

Creating an X.509 Version 3 Extension File


X.509 Version 3 extensions restrict how certificates can be used.

To create the X.509 v3 extension file:

1. Using a text editor, open a new file and paste the following text into it:

```
authorityKeyIdentifier=keyid, issuer
basicConstraints=CA:TRUE
keyUsage=digitalSignature, nonRepudiation, keyEncipherment, dataEncipherment
subjectAltName=email:test@mycompany.com
```

2. Save the file with an `.ext` extension (for example, `v3.ext`).
3. Store the file in the `C:\OpenSSL-Win32\bin` directory.

 **Note: More about X.509 v3 extensions**

For more information about X.509 v3 certificate extensions, see https://www.openssl.org/docs/apps/x509v3_config.html.

Creating the Private Key and Certificate

To create the PCoIP Agent's private key, certificate signing request, and certificate:

1. Launch `openssl` from the `C:\OpenSSL-Win32\bin` directory.
2. Create a *3072-bit private key* in RSA format:

```
genrsa -out pcoipprivate.pem 3072
```

This command creates a `pcoipprivate.pem` file in the current directory.

3. Create a *certificate signing request*:

```
req -new -key pcoipprivate.pem -out pcoip_req.csr
```

This command initiates an interactive script that prompts you to enter certificate metadata. You may be prompted for a challenge password and company name.

The **Common Name** field must be the fully-qualified domain name (FQDN) of the desktop where the PCoIP agent is installed for example, `mypcname.mydomain.local`. If you want to

use the same certificate on multiple machines in the same domain, use a wild card for all but the last two segments of the FQDN: `*.mydomain.local`.

When finished, this command creates a `pcoipprivate.pem` file in the current directory.

4. Sign and create an **X.509 v3 certificate**. This example creates a certificate valid for one year (365 days). To customize the certificate lifetime, change the `-days` parameter:

```
x509 -req -outform PEM -in pcoip_req.csr -extfile v3.ext -CA rootCA.pem -
CAkey rootCA.key -CAcreateserial -sha256 -out pcoipcert.pem -days 365
```

This command creates a `pcoipcert.pem` file in the current directory.

 **Caution: Use Secure Hash Algorithms**

Windows Certificate Manager has deprecated the use some older hash algorithms such as MD4, MD5, and SHA1. Use SHA-384 or SHA-256 when creating your certificates.

5. Create a **PKCS#12 file** to import into a Windows certificate store. Replace `<password>` with your password:

```
pkcs12 -export -in pcoipcert.pem -inkey pcoipprivate.pem -name PCoIP -out
pcoipagent.p12 -password pass:<password>
```

This command creates a `pcoipagent.p12` file in the current directory.

 **Note: The -name parameter must be 'PCoIP'**

You must specify `PCoIP` as the `-name` parameter value. This value sets the certificate's friendly name.

6. Place the `pcoipagent.p12` and `rootCA.pem` files where administrative users of the PCoIP Agent can access them, such as on network storage or on a USB key.

Installing the Private Key and Certificate on the PCoIP Agent Desktop

The agent certificate and signing certificate must be installed on each desktop running a PCoIP Agent.

To install the agent certificate and signing certificate:

1. Open the Microsoft Management Console on the agent machine:
 - a. Press + **r** to open the run dialog
 - b. type **mmc** and press **Enter**.
2. Add the Certificates snap-in:
 - a. Select **File > Add/Remove Snap-in**.
 - b. Select **Certificates** from the Available snap-ins list and click **Add**.
 - c. Select **Computer account** and click **Next**.
 - d. Select **Local computer** and click **Finish**.
 - e. Click **OK**.
3. Add **rootCA.pem** to the 's Trusted Root Certification Authorities list:
 - a. Expand **Certificates (Local Computer)**.
 - b. Right-click **Trusted Root Certification Authorities**, select **All Tasks > Import from the context menu**, and click **Next**.
 - c. Use the Browse button to navigate to the directory where the **rootCA.pem** file is located.
 - d. Select **All Files (*.*)** from the File name drop-down list, and select the **rootCA.pem** file.
 - e. Click **Open, Next** (twice), and **Finish**.
 - f. Click **OK** to close the *The import was successful* message.
4. Add **pcoipagent.p12** to the Personal store of the agent's computer account:
 - a. Expand **Certificates (Local Computer)**.
 - b. Right-click **Personal**, select **All Tasks > Import from the context menu**, and click **Next**.

- c. Select ****Personal Information Exchange (.pfx;p12)**** from the File name drop-down list, and select the **pcoipagent.p12** file.
 - d. Click **Open** and **Next**.
 - e. Type the certificate password.
 - f. Ensure these settings are correct:
 - **Mark this key as exportable...** is enabled
 - **Include all extended properties** is enabled
 - g. Click **Next** twice and **Finish**.
 - h. Click **OK** to close the The import was successful message.
5. Restart the PCoIP Agent service on the workstation:
- a. Open Control Panel and select **Administrative Tools**.
 - b. Double-click **Services**.
 - c. Select your PCoIP Agent service in the Services list.
 - d. Click **Restart the service**.

Installing the Internal Root CA Certificate in a PColP Client

Your root CA certificate must be installed in any PColP client that will be used to connect to the PColP Agent.

Installing Root CA Certificates on a Zero Client

Zero clients are managed via an Administrative Web Interface (AWI) and accessed using a web browser. Supported browsers are:

- Firefox 86
- Chrome 60
- Internet Explorer 11
- Microsoft Edge 25



Note: Browser must support TLS

Web browsers must support TLS 1.2 or later to connect to the zero client's Administrative Web Interface.

To upload the root CA certificate to a zero client:

1. From a supported browser, enter the IP address of the zero client and log in to its Administrative Web Interface.
2. Select the **Upload > Certificate** menu to display the *Certificate Upload* page.
3. In the *Certificate filename* field, click **Browse**, and then navigate to the directory that contains your root CA certificate.
4. Select your root CA certificate (***.pem**) and then click **Open**.
5. Click **Upload** and then **OK**.
6. Click **Continue**.

If the certificate uploads successfully, it will appear in the Uploaded Certificates section on this page.

Installing Root CA Certificates on a Mobile Client

Before you can install the root CA certificate in a PCoIP Mobile Client, you must change the file extension from **.pem** to **.crt**.

The **.pem** extension is used for different types of X509 v3 files that contain ASCII Armor (Base64) data prefixed with a "-----BEGIN" line. The **.crt** extension is used for certificates that may be encoded either in binary DER format or ASCII PEM format.

Installing Root CA Certificates in the PCoIP Software Client for macOS

Important: Root CA Certificate must have a .crt extension

You must change the root CA certificate's extension from **.pem** to **.crt** before installing it on a PCoIP Software Client.

In macOS, certificates are stored in the Keychain Access application.

To import your root CA certificate in the PCoIP Software Client for macOS:

1. Copy your root CA certificate file (*.crt) to the Mac client desktop.
2. Double-click **Applications > Utilities Keychain Access.app** to open Keychain Access.
3. Select **File > Import Items**.
4. Navigate to the desktop and then select your root CA certificate.
5. In the Destination Keychain drop-down menu, select **System**, and then click **Open**.
6. If prompted, enter your Keychain Access password and then click **Modify Keychain**.
7. At the next screen, click **Always Trust** when asked whether you want your computer to trust certificates signed by this certificate.
8. If prompted, enter your Keychain Access password and then click **Update Settings**.

After the certificate installs successfully, it appears in the **System > Certificates** list.

Installing Root CA Certificates in the PCoIP Software Client for Windows

Important: Root CA Certificate must have a .crt extension

You must change the root CA certificate's extension from `.pem` to `.crt` before installing it on a PCoIP Software Client.

Note: Windows must trust your root certification authority

When you use your own private key and certificate, you must add your internal root CA certificate to the Windows Trusted Root Certification Authorities certificate store on the client computer.

Users without a trusted root CA will receive an Unable to get local issuer certificate error and fail to connect.

Note: Active Directory group policies

For information on using Active Directory Group Policy to distribute certificates to client computers, see <http://technet.microsoft.com/en-us/library/cc772491.aspx>.

To import the root CA certificate for the PCoIP Software Client for Windows:

1. Copy your root CA certificate file (*.crt) to a directory reachable by your Windows client.
2. Open the Microsoft Management Console on the agent machine:
 - a. Press + **r** to open the run dialog
 - b. type **mmc** and press **Enter**.
3. Add the Certificates snap-in:
 - a. Select **File > Add/Remove Snap-in**.
 - b. Select **Certificates** from the Available snap-ins list and then click **Add**.
 - c. Select **My user account** and then click **Finish**.
 - d. Click **OK**.
4. Import the root CA certificate:
 - a. Expand **Certificates - Current User**.

- b. Right-click on **Trusted Root Certification Authorities**, select **All Tasks > Import** from the context menu, and then click **Next**.
- c. Use the Browse button to navigate to the directory where your root CA certificate is located and select your root CA certificate.
- d. Click **Open** and then **Next**.
- e. Select the option to place all certificates in the Trusted Root Certification Authorities certificate store.
- f. Click **Next** and then **Finish**.
- g. At the security warning, click **Yes**.

After the certificate installs successfully, it appears in the Trusted Root Certification Authorities > Certificates list.

Installing in a PCoIP Mobile Client

To install your internal root CA certificate on an iOS, Android, or ChromeOS device, consult the documentation for your device. The PCoIP Mobile Client software does not implement certificate installation.

Verifying Certificate Formats

If you have OpenSSL installed on your system, you can use it to verify that your root CA certificate is in ASCII PEM format.

To verify that the root CA certificate is in ASCII PEM format:

1. Launch **openssl** from the **C:\OpenSSL-Win32\bin** directory.
2. Type the following command:

```
x509 -in rootCA.pem -text -noout
```

If your certificate contents successfully display on the screen, it is encoded correctly as a PEM file.

Configuring the Agent Certificate Mode

The PCoIP Agent chooses a certificate based on the parameters set in the *Configure PCoIP Security Certificate Settings* GPO variable.

Since PCoIP agents automatically generate and use self-signed certificates by default, you only need to configure the Configure PCoIP Security Certificate Settings GPO variable if you are deploying your own custom certificates.

You can configure PCoIP Agents to handle certificates in the following ways:

- Always use self-signed certificates (default)
- Always use local custom certificates
- Attempt to use a local certificate, and revert to self-signed if not found

 **Note: Import the administrative template file before configuring**

The Configure License Server Path GPO variable only appears in the GPO editor after you import the administrative template file.

The example in this section configures the agent to look for the certificate only in the remote workstation's Windows certificate store. The example also gives the store the friendly name of "PCoIP". These settings are mandatory when you deploy your own custom certificates.

To configure the *Configure PCoIP Security Certificate Settings* GPO variable with a custom certificate:

1. Open the Local Group Policy Editor on the agent machine:
 - a. Press + **R** to open the run dialog
 - b. type **gpedit.msc** and press **Enter**.
2. Navigate to *Local Computer Policy > Computer Configuration > Administrative Templates > PCoIP Session Variables > Not Overridable Administrator Defaults*
3. Double-click **Configure PCoIP Security Certificate Settings** to open the variable's dialog.
4. Select **Enabled** to enable the setting.

5. In the *How the PCoIP agent chooses the certificate...* drop-down list, select **From the Certificate Store**. A search field will appear next, labelled ***Name of the Certificate Store to search for CA-signed certificates***.
6. In the search field, enter the name for the certificate in the Windows Cert store. This should be the ***friendly name*** of the CA signed cert which appears in the store.
7. In ***The minimum key length...*** drop-down list, select the desired minimum key length (in bits). If you're unsure, specify the actual length of the cert you're using.
8. Click **OK**.
9. Close the Local Group Policy Editor and reboot the desktop to apply your settings.
10. After the PCoIP agent restarts, you can verify that it is using your custom certificate by checking the agent's level 2 log files.

Reference Information for vSphere Users

This section contains reference information useful for vSphere users configuring displays with the PCoIP Graphics Agent.

You can find information here for:

- [Configuring multiple monitors for NVIDIA GRID vGPUs](#)
- [Configuring multiple monitors for non-GRID vGPUs](#)
- [Configuring displays for NVIDIA GRID with pass-through](#)

Configuring Multiple Monitors for NVIDIA GRID vGPU

This section describes how to add a shared NVIDIA GRID PCI device to your virtual machine and specify its GPU profile. The following instructions are only required for virtualized workstations using a [supported NVIDIA GRID vGPU video card](#).

Note: Monitor limitations

The PCoIP Graphics Agent supports up to four displays. Your video card may limit the actual number of displays you can have.

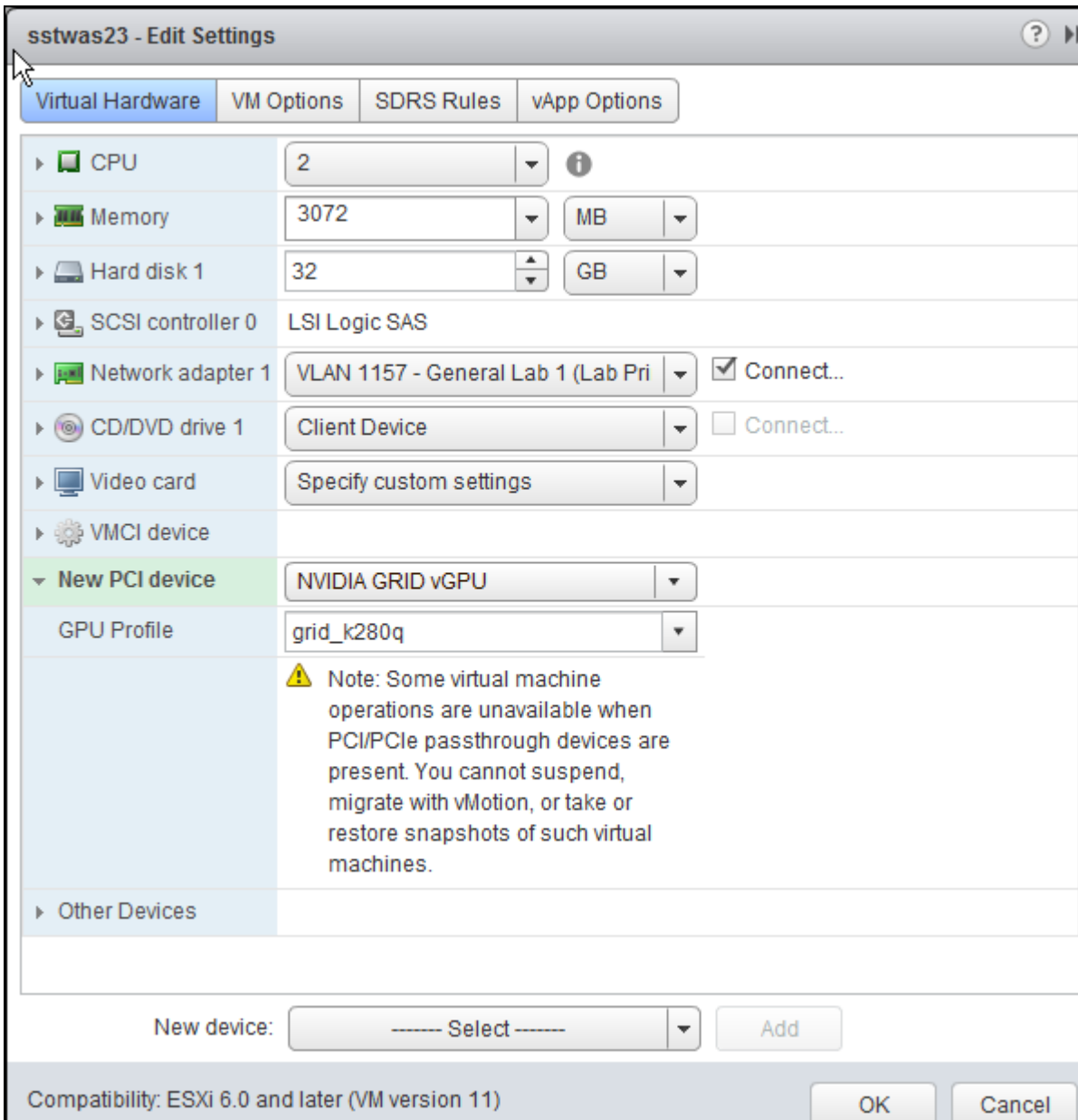
Before you begin, ensure the following prerequisites are met:

- You have installed the NVIDIA GRID graphics card and supported driver on the ESXi host.
- You have installed VMware Tools on your ESXi host and the VMware SVGA 3D driver on the virtual machine.
- You have local administrative permission to the workstation.
- You have disabled OS power management features on the workstation.

To add a shared PCI device and specify its GPU profile:

1. Using vSphere Web Client, right-click the virtual machine in the Navigator list and select **Power > Power Off**.

2. Right-click the virtual machine and select **Edit Settings**.



3. In the New device drop-down list, select **Shared PCI Device** and then click **Add**.
4. Click **Reserve all memory**.
5. In the GPU Profile drop-down list, select the profile for your card. This profile determines how many virtual display heads, or displays, are available for your card.
6. Click **OK**.
7. Start the virtual machine.

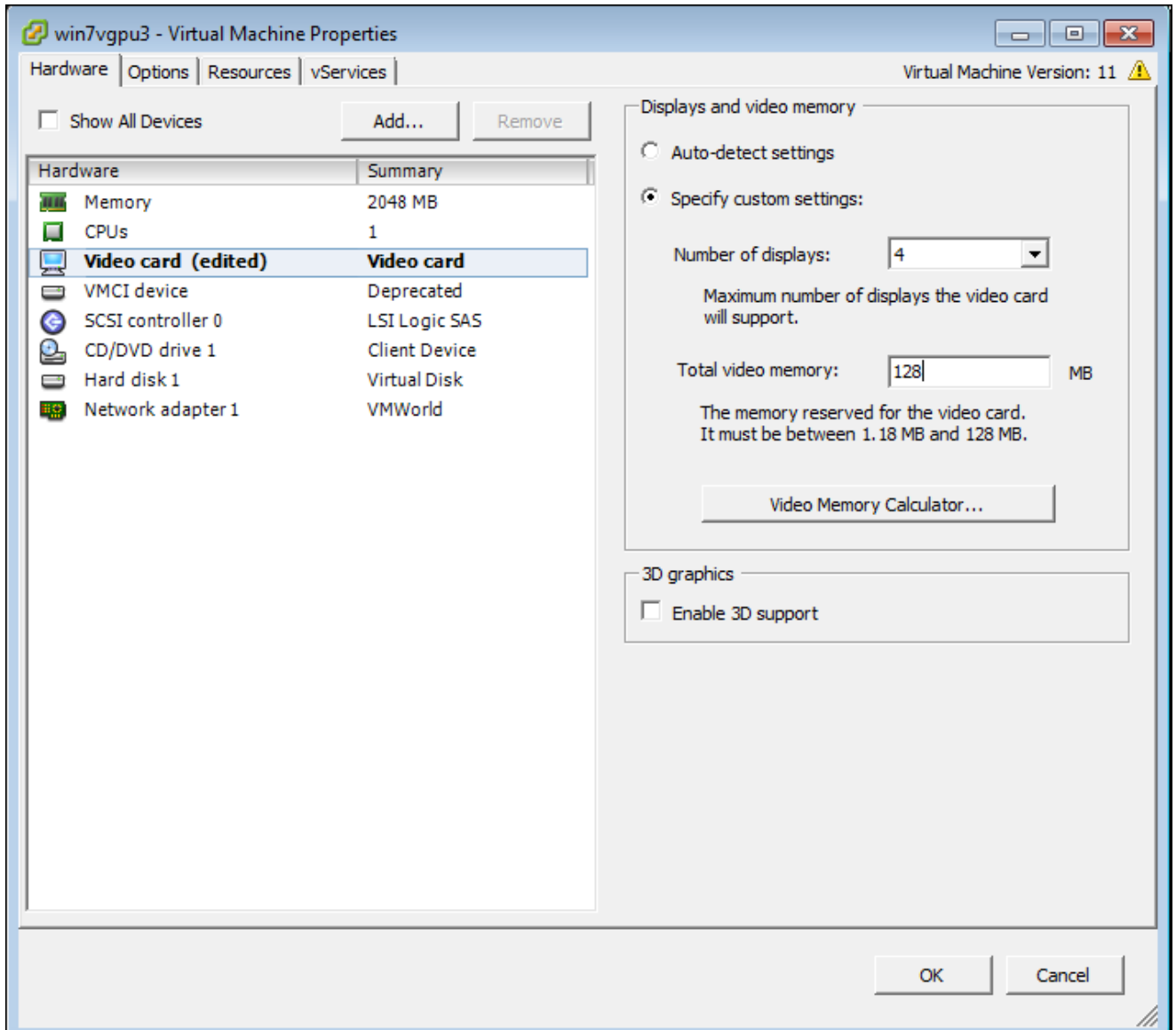
Configuring the Number of Displays with Non-GRID-Compatible GPUs

When using non-GRID GPUs in virtualized workstation virtual machine using vSphere Client, you must specify the number of displays the virtual machine will use. You can do this when you first create the virtual machine or at any time afterwards.

To configure the number of displays for a virtual machine with a non-NVIDIA GPU:

1. Using vSphere Client, create the virtual machine with the desired settings.
2. In the Ready to Complete dialog, enable Edit the virtual machine settings before completion, and then click Continue.
3. In the Virtual Machine Properties dialog, select Video card.

- In the Displays and video memory section, select the number of displays the video card will support for this virtual machine.



- If desired, enter any other video card parameters.
- Click OK.
- Start the virtual machine.

To change the number of monitors in an existing virtual machine:

- Shut down the virtual machine
- Right-click the virtual machine in the Inventory List
- Select Edit Settings
- In the Virtual Machine Properties dialog, select Video card.

5. In the Displays and video memory section, select the number of displays the video card will support for this virtual machine.
6. Click OK.
7. Start the virtual machine.

Configuring Displays for NVIDIA GRID with Pass-Through

This section describes how to add an NVIDIA GRID PCI device to your ESXi host.

The following instructions are only required for virtualized workstations using a supported NVIDIA GRID video card with pass-through. For specific supported models, see [System Requirements](#).

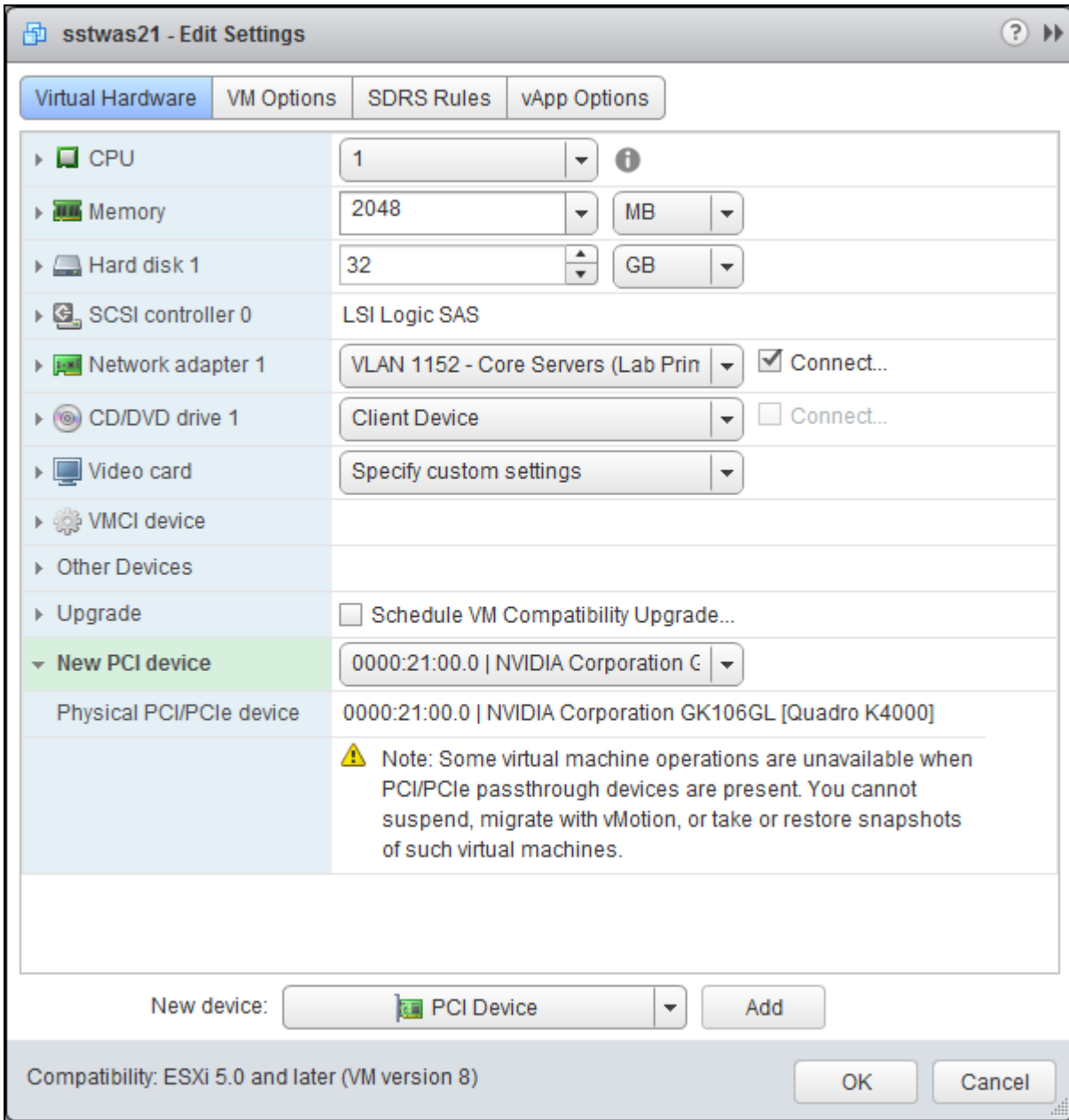
Before you begin, ensure the following prerequisites are met:

- You have installed the NVIDIA GRID graphics card.
- You have installed VMware Tools on your ESXi host and the VMware SVGA 3D driver on the virtual machine.
- You have local administrative permission to the workstation.
- You have disabled OS power management features on the workstation.

To add a PCI device:

1. Using vSphere Web Client, right-click the virtual machine in the Navigator list and select **Power > Power Off**.
2. Right-click the virtual machine and select **Edit Settings**.

3. In the *New device* drop-down list, select **PCI Device** and then click **Add**.



4. Click **OK**.

5. Start the virtual machine.

Import GPO Template Files

GPO template files are automatically imported by the Graphics Agent for Windows installer, *except* on domain controllers. You must manually import the files into the domain controller's Group Policy Editor.

To import the template on a domain controller:

1. Copy the **admx** file from

```
C:\Program Files\Teradici\PCoIP Agent\configuration\policyDefinitions\PCoIP.admx
```

to

```
C:\Windows\PolicyDefinitions
```

2. Copy the **adml** file from

```
C:\Program Files\Teradici\PCoIP Agent\configuration\policyDefinitions\en-US\PCoIP.adml
```

to

```
C:\Windows\PolicyDefinitions\en-US
```


IPv6

The Graphics Agent for Windows now supports IPv6 addresses. No configuration is needed to switch between IPv4 and IPv6 modes.

Contacting Support

If you encounter any problems installing, configuring, or running the Graphics Agent, you can create a [support ticket](#) with Teradici.

Before creating a ticket, be prepared with the following:

- A detailed description of the problem
- Your agent version number ([how do I find my version number?](#))
- A prepared [support file](#)

The Teradici Community Forum


The PCoIP Community Forum enables users to have conversations with other IT professionals to learn how they resolved issues, find answers to common questions, have peer group discussions on various topics, and access the Teradici PCoIP Technical Support Service team. Teradici staff are heavily involved in the forums.

To visit the Teradici community, go to <https://communities.teradici.com>.

Finding the Agent Version Number

You can find your PCoIP Agent's version number using the PCoIP Control Panel or the Windows Control Panel.

To find your version number using the PCoIP Control panel:

1. Click  in the Windows system tray and select **Updates** from the context menu.
The control panel appears with the Updates tab selected.
2. The installed software version appears in the **Status** box of the Updates tab.

To find your agent's version number using the Windows control panel:

1. Open the Windows Control Panel, and navigate to Uninstall a program.
2. Find the PCoIP agent type and version number in the program list.


Creating a Technical Support File

Teradici may request a support file from your system in order to troubleshoot and diagnose PCoIP issues. The support file is an archive containing PCoIP Graphics Agent for Windows logs and other diagnostic data that can help support diagnose your problem.

You can create a support file using the PCoIP control panel. If the PCoIP control panel is disabled, you can also run the bundling application directly using Windows Explorer or from the command line.

Both methods place a support bundle in the Teradici Support folder, located at **C:\ProgramData\Teradici\Support**.

To create a support file with the PCoIP Control Panel:

1. Open the PCoIP Control Panel  in the system tray.
2. Select the **Support** tab and then click the **Create Support File** button.
3. When the zipped support file is ready, an Explorer window opens and displays your Teradici Support folder. The generated file is selected.

To create a support file with the bundling application:

1. Using Windows Explorer or a command line tool, navigate to **C:\Program Files\Teradici\PCoIP Agent**.
2. Run **SupportBundler.exe**.
3. When the zipped support file is ready, an Explorer window opens and displays your Teradici Support folder. The generated file is selected.

Performing Diagnostics

Each PCoIP component creates and updates a log file which records its activity as the system is used. Most troubleshooting within a PCoIP system begins by examining these log files and looking for error conditions or other indications that may explain why the system is not operating as expected.

Log files for the and other Teradici PCoIP components are saved to log directories.

The Windows Event Viewer also contains PCoIP event logs for high-level events.

 **Note: Bundling log files for support**

When investigating issues with Teradici support, you may need to provide a support file which includes system log files. Instructions are provided [here](#).

Troubleshooting License Issues

Teradici includes license troubleshooting utilities with the Graphics Agent for Windows. These utilities allow you to validate your licenses and list license entitlements.

Validate Licenses

`pcoip-validate-license` scans your local system and any connected physical or cloud-based license servers for active licenses, and lets you know when your license subscription expires. For more information, see [Welcome to Cloud Licensing](#).

To run the license validation tool, open a PowerShell window, navigate to the PCoIP Agent directory, and type:

```
./pcoip-validate-license.ps1
```

For more detailed instructions, open a PowerShell window and type:

```
get-help ./pcoip-validate-license.ps1
```

List License

`pcoip-list-licenses` retrieves and displays all license entitlements on a connected physical or cloud-based PCoIP license server.

To run the license list tool, open a PowerShell window, navigate to the PCoIP Agent directory, and type:

```
./pcoip-list-licenses.ps1
```

For more detailed instructions, open a PowerShell window and type:

```
get-help ./pcoip-list-licenses.ps1
```

Tracking Usage Over Time


Teradici Local License Server users can use our open-source script, which displays the maximum Cloud Access Software license concurrent usage for a license server over time. For more information, refer to our [Github page](#).

Teradici Cloud Licensing users can write a short script that runs `pcoip-list-licenses` periodically (for example, every 60 minutes) on any PCoIP agent machine to track license usage.

Managing Session Licenses Using the PCoIP Control Panel

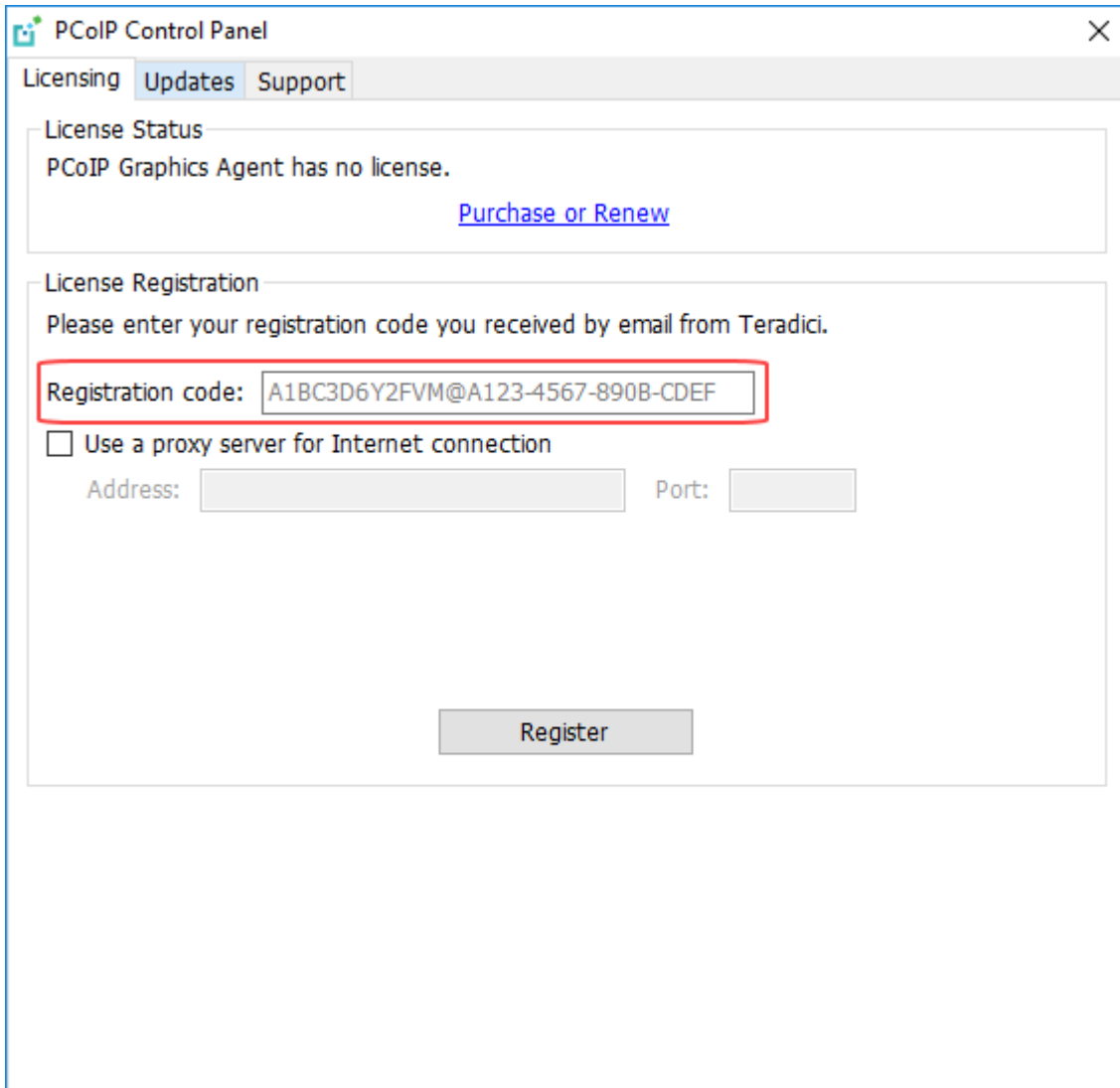
You can use the PCoIP Control Panel to register a license, check the status of a license, and renew a license.

The PCoIP Control Panel can be opened using either of these methods:

- Click  in the Windows system tray
- Open a command line tool and run

```
"C:\Program Files\Teradici\PCoIP Agent\bin\pcoip_control_panel.exe"
```


If you have not registered your license already, select the **Licensing** tab and enter your registration code, as shown next.



The screenshot shows the PCoIP Control Panel interface with the 'Licensing' tab selected. The 'License Status' section indicates that the PCoIP Graphics Agent has no license and provides a 'Purchase or Renew' link. The 'License Registration' section prompts the user to enter a registration code received by email from Teradici. A red box highlights the registration code input field containing 'A1BC3D6Y2FVM@A123-4567-890B-CDEF'. Below this, there is an unchecked checkbox for 'Use a proxy server for Internet connection' and input fields for 'Address' and 'Port'. A 'Register' button is located at the bottom of the registration section.

PCoIP Control Panel

Licensing Updates Support

License Status

PCoIP Graphics Agent has no license.

[Purchase or Renew](#)

License Registration

Please enter your registration code you received by email from Teradici.

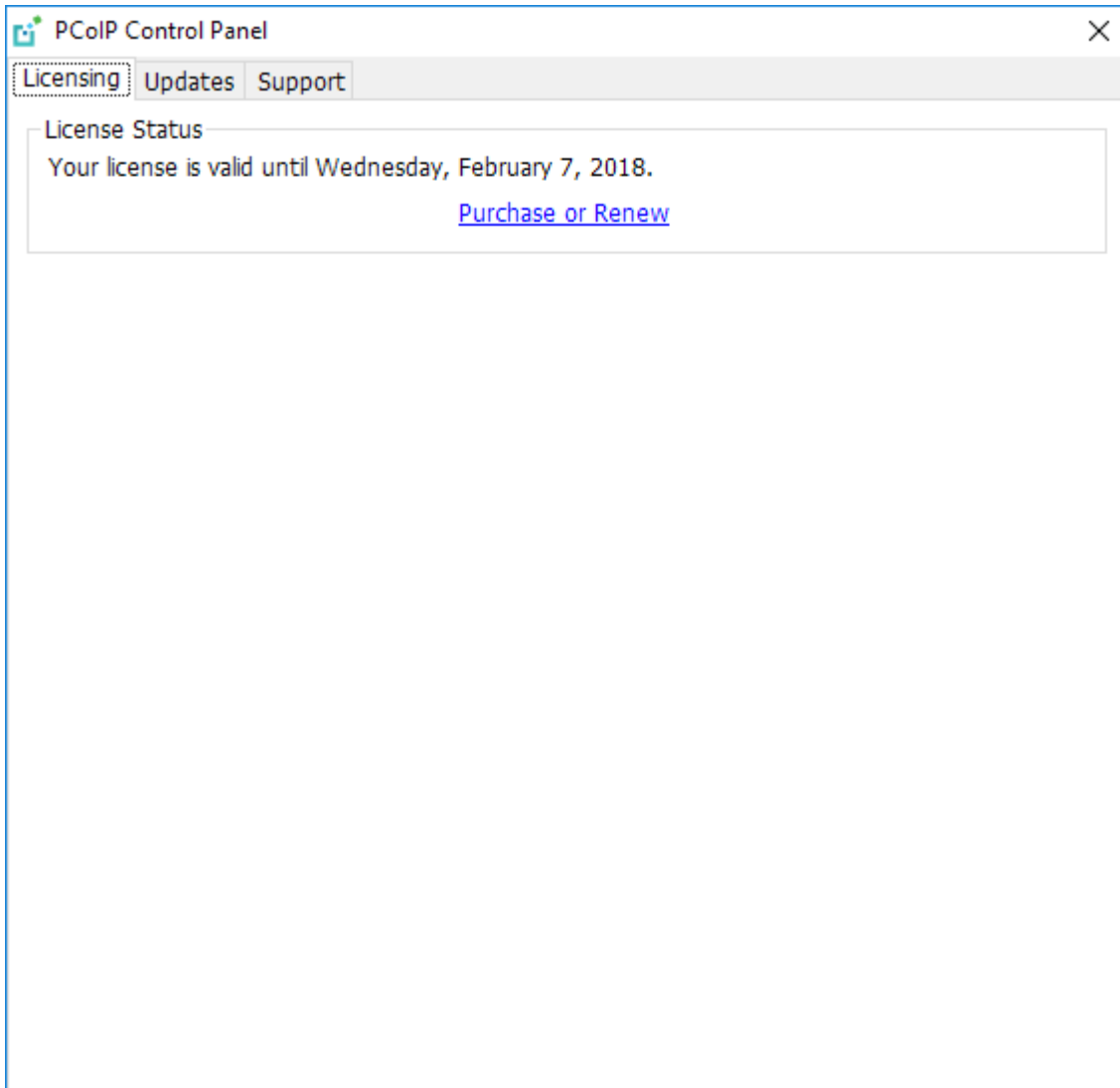
Registration code:

Use a proxy server for Internet connection

Address: Port:

Register

Once you are licensed, the tab will show your license subscription expiry information, and enables you to renew the license.



Handling GPU Configuration Problems

If you are experiencing performance issues with your agent system, or believe that your displays are not being accelerated by your Graphics cards as expected, there may be a configuration or licensing issue. The Graphics Agent includes tools designed to help diagnose configuration problems.

Identifying Non-Accelerated Displays

If there are problems with a GPU's configuration or licensing, the Graphics Agent will not be able to accelerate some or all of your displays. Affected displays will continue to work, but in a degraded, non-accelerated state.

Displays that are operating in this fallback state show a small yellow marker in the top-right corner.

Displays which are working properly do not show an indicator.

Tip: Disabling non-accelerated displays

If you would rather non-accelerated displays be disabled entirely, you can change the fallback mode by editing a [registry key](#).

Troubleshooting GRID Status Indicators

Note: Recommendations may also work for troubleshooting non-GRID status indicators

Although the following recommendations address GRID configuration issues, their equivalents may also help for non-GRID GPUs (including the AMD technology preview). Teradici's general advice is to ensure that your GPU card and driver version is [supported](#), restart your PCoIP session, and retry when necessary.

A yellow status indicator indicates that a display is not GPU-accelerated and is using fallback behavior. If you see a yellow status indicator, it is most most likely caused by a GRID licensing issue or limitation of the allocated GRID profile.

Here are some recommendations for addressing status indicators:

- Check the licensing status of the NVIDIA graphic card. For more information, [NVIDIA's GRID Licensing Guide](#).
- Ensure you have a supported NVIDIA GRID driver installed. Supported driver versions are listed [here](#).
- If you recently updated your driver and see a yellow status indicator, restart your PCoIP session.

Configuring GPU Status Markers

If required, you can change the status indicator behavior. The possible indicator states are:

Indicator state	Description
All indicators off	Markers will never be displayed.
Non-GPU indicator only (default)	The system shows a yellow marker on each non-accelerated display.
All indicators on	Markers will appear on all displays: Yellow markers on each non-accelerated display, and green markers on each accelerated display.

To change how GPU status indicators display:

1. Open the registry editor on the agent machine:
 - a. Press + to open the run dialog
 - b. type `regedit.exe` and press .
2. Navigate to the `HKEY_LOCAL_MACHINE > SOFTWARE > Teradici > PCoIP > pcoip_admin` directory.
3. Right-click the `pcoip_admin` folder and select **New DWORD**. Name the new entry `pcoip.efe_marker`.
4. Right-click `pcoip.efe_marker` and select **Modify**.

5. In the *Edit DWORD Value* dialog box, revise the number in the **Value data** field:
 - Use **0** to turn off all status markers.
 - Use **1** to display status marker when the system displays a non-GPU display. This is the default setting.
 - Use **2** to turn on all status markers.
6. Click **OK**.

Disabling Non-Accelerated Displays

If you would prefer that non-accelerated screens be disabled entirely, configure the `pcoip.efe_capture_fallback` registry key.

To configure system fallback behavior:

1. Open the registry editor on the agent machine:
 - a. Press + **r** to open the run dialog
 - b. type `regedit.exe` and press **Enter**.
2. Navigate to the `HKEY_LOCAL_MACHINE > SOFTWARE > Teradici > PCoIP > pcoip_admin` directory.
3. Right-click `pcoip.efe_capture_fallback` and select **Modify**.
4. Set the desired behavior for the Value data field:
 - Use **0** to turn the fallback feature **off**. Non-accelerated displays will be disabled.
 - Use **1** to turn the fallback feature **on**. Non-accelerated displays will be used. This is the default setting.
5. Click **OK**.

Locating Agent Log Files

Log files for the PCoIP agent are located in the following directories by default. If you changed your agent's location during installation, the log files will be in your custom location instead.

Component	Log file location
Graphics Agent for Windows	%programdata%\Teradici\PCoIPAgent\logs
PCoIP Server	PCoIP Server%programdata%\Teradici\PCoIPAgent\logs

 **Note: Bundling log files for support**

When investigating issues with Teradici support, you may need to provide a support file which includes system log files. Instructions are provided [here](#).

Setting Log Levels

Each PCoIP component is configured to log events. The amount of information captured can be configured by setting the log verbosity on a scale from 0 (least verbose) to 3 (most verbose). By default, the Graphics Agent for Windows records log events at level 2.

When troubleshooting a particular problem, Teradici Support Services may recommend adjusting the log level for specific components to obtain more information from certain parts of the system.

To change the verbosity level, specify a new *Event Filter Mode* setting. For help changing agent configuration settings, see [Configuring the Graphics Agent for Windows](#).

Session Log IDs

At the start of each PCoIP session, a unique session ID is generated by the PCoIP Client and passed to all connected PCoIP components (including the agent). Log messages generated by the agent are prefixed with this session ID, making it easy to identify. All log messages generated during a single session, by any PCoIP component, will be prefixed with the same session log ID in RFC-4122 format:

```
yyyy-mm-ddThh:mm:ss.ffffffZ xxxxxxxx-xxxx-xxxx-xxxx-xxxxxxxxxxxx > ...
```

For example:

```
2015-11-06T08:01:18.688879Z 4208fb66-e22a-11d1-a7d7-00a0c982c00d > ...
```

Log messages that do not pertain to a specific session will show a string of zeroes in place of the session log ID number.

If a PCoIP component does not receive a session log ID from the PCoIP client, or receives an invalid value, it will generate a new session log ID and distribute it to the other components in the system.

Viewing Windows Event Viewer PCoIP Agent Logs

You can view high-level session and connection events generated by the PCoIP agent and Cloud Access Manager in the Windows Event Viewer.

PCoIP Agent Events

To view events using the Windows Event Viewer:

1. Navigate to *Start > Control Panel > System and Security > Administrative Tools* and double-click **Event Viewer**.
2. Navigate to *Event Viewer (Local) > Windows Logs*, right-click **Application**, and select **Filter Current Log**.
3. In the *Event sources* drop-down list, select **PCoIPAgentService** and click **OK**.
4. Select an event to view its details.

The next example shows typical PCoIP agent session and connection events that you can view in the Windows Event Viewer.

Application Number of events: 8,957

Filtered: Log: Application; Source: PCoIPAgentService. Number of events: 96

Level	Date and Time	Source	Event ID	Task Category
Information	2/4/2016 10:47:03 AM	PCoIPAgent...	88	None
Information	2/4/2016 10:45:32 AM	PCoIPAgent...	89	None
Information	2/4/2016 10:44:08 AM	PCoIPAgent...	88	None
Information	1/25/2016 4:45:03 PM	PCoIPAgent...	95	None
Information	1/25/2016 4:43:09 PM	PCoIPAgent...	89	None
Information	1/25/2016 3:49:37 PM	PCoIPAgent...	88	None
Information	1/22/2016 10:09:50 AM	PCoIPAgent...	95	None
Information	1/12/2016 12:25:27 PM	PCoIPAgent...	89	None
Information	1/11/2016 11:16:52 AM	PCoIPAgent...	88	None
Information	12/22/2015 10:46:00 AM	PCoIPAgent...	89	None
Information	12/21/2015 10:03:11 AM	PCoIPAgent...	88	None
Information	12/17/2015 6:55:59 PM	PCoIPAgent...	89	None
Information	12/17/2015 4:15:47 PM	PCoIPAgent...	88	None
Information	12/17/2015 4:15:26 PM	PCoIPAgent...	95	None
Information	12/17/2015 4:14:30 PM	PCoIPAgent...	96	None
Information	12/17/2015 4:01:37 PM	PCoIPAgent...	89	None

Event 88, PCoIPAgentService

General Details

Session cc3effd2-ebf7-42e4-8172-8f14f7474aaa is starting.

Log Name:	Application	Logged:	2/4/2016 10:47:03 AM
Source:	PCoIPAgentService	Task Category:	None
Event ID:	88	Keywords:	Classic
Level:	Information	User:	N/A
Computer:	JWTWAS23.terase.local		

Key events to watch for in the event viewer logs:

Event ID	Key	Notes
88	SESSION_START	
89	SESSION_END	
90	LAUNCHER_EXIT	

Event ID	Key	Notes
91	CONNECTION_TIMEOUT	
92	CONNECTION_FAILURE	
93	SESSION_REDIRECTION	
94	SESSION_INTERRUPTION	
95	SERVICE_STARTING PCoIP	Agent service starting.
96	SERVICE_STOPPING PCoIP	Agent service stopping.
97	SESSION_RESUMING	
98	VIDEO_DRIVER_REPAIR_ERROR	
99	FLEXERA_SERVICE_ERROR	
100	VCHAN_LOADER_EXCEPTION	An exception was thrown in a PCoIP virtual channel plugin.
101	NO_AGENT_ERROR	The PCoIP agent process could not be detected.
102	VCHAN_LOADER_INTERNAL_ERROR	An internal error has occurred.
103	VCHAN_LOADER_BAD_INVOCATION_ERROR	The PCoIP virtual channel loader utility was invoked incorrectly.
104	AGENT_PROCESS_TERMINATED_ERROR	The PCoIP Agent process was terminated.
105	SSO_PIPE_CREATION_ERROR	The Single Sign On framework was unable to establish a secure connection with the Teradici Agent.
112	SERVICE_START_ERROR PCoIP	Agent service cannot be started.
113	SERVICE_INTERNAL_ERROR	

Event ID	Key	Notes
114	SERVICE_ADMINISTRATIVE_MESSAGE	

Cloud Access Manager Events

If you are using Cloud Access Manager to start and stop your host machines, the CAMIdleShutdown process will log events as well. Follow the same procedure

Event ID	Description
95	CAM Idle Machine Shutdown service starting
96	CAM Idle Machine Shutdown service stopping
114	Machine will be checked for idle state.
115	Shutting down idle machine.

Frequently Asked Questions

Can I use a screensaver?

Yes. However, a blank, static screensaver will provide the most efficient CPU and network bandwidth usage.

Why can't I use the maximum number of monitors or monitor resolution?

GPU profile licensing, GPUs, or clients may limit monitor resolution and monitor count, which will prevent you from utilizing the full agent specification. For more information, see [supported displays](#).

Which graphics rendering APIs are supported?

The Graphics Agent captures and delivers the output from the GPU, which is responsible for providing rendering APIs like OpenGL. See the documentation for your GPU for more information about rendering APIs.

How quickly does a PCoIP agent complete a connection?

PCoIP agents can usually achieve a connection in 15 to 30 seconds. Teradici uses the statistical value Top Percentile (TP) to measure the time to establish a session:

- TP99: Ninety-nine percent of connections complete in under 30 seconds.
- TP50: Fifty percent of connections complete in under 15 seconds.

What do I need to know about power management?

Hosts with Windows power management enabled may drop PCoIP connections when turning off displays or going to sleep. If this behavior is undesirable, these Windows power management features should be turned off.

To disable Windows power management features:

1. From the Windows Control Panel, open **Power Options**.
2. Click **Change plan settings** next to the enabled power plan.
3. Select **Never** from the drop-down list for *Turn off the display*
4. Select **Never** in the drop-down list for *Put the computer to sleep*.
5. Click **Save changes**.

Why am I seeing black bars?

Black bars may appear around the outside of your desktop when there is a mismatch between the supported resolutions on the host side and the client monitors. This is only applicable when the PCoIP Graphics Agent is not able to successfully initialize or communicate with the NVIDIA GPU via the Grid APIs. For more information, see [Handling GRID Configuration Problems](#).

Why is my display topology broken after upgrading my GRID card?

If you upgrade your NVIDIA graphics card to a new supported GRID driver version **after** installing the Graphics Agent, the NVIDIA Capture SDK may need to be [manually re-enabled](#).

Why is my application not sending audio?

The PCoIP agent delivers audio over PCoIP connections by reassigning the system's default audio device. Only applications that use the system default audio device will send or receive audio over PCoIP; applications that are configured to use non-default devices will not work. If you don't hear audio from your application, make sure it is configured to use the system default audio device.

I'm using Teradici Cloud Licensing. What network blocks should I leave open?

If you are using Teradici Cloud Licensing, you will need to whitelist the following:

- teradici.flexnetoperations.com
- teradici.compliance.flexnetoperations.com

Alternatively, you can also ensure the following network blocks are whitelisted:

- **Production:** 64.14.29.0/24
- **Disaster Recovery:** 64.27.162.0/24

The following network blocks are not currently in use, but may also be used in the future:

- **Production:** 162.244.220.0/24
- **Disaster Recovery:** 162.244.222.0/24