

Chengdu Yunjiutian Network
Technology Co., Ltd

aaPanel User Guide

(2023 V3.1)



See more Online Guide: <https://help.yunjiutian.com/project-1/doc-67/>

The ECSserver has pre installed the pure aaPanel Linux Panel. To use the panel, you need to release port 7800 in the security group direction. If you use FTP, you need to release port 20,21,39000-40000. If you need to connect to MySQL through the internet, you need to release port 3306. PhpMyadmin still needs to release port 888. Otherwise, the use will be affected

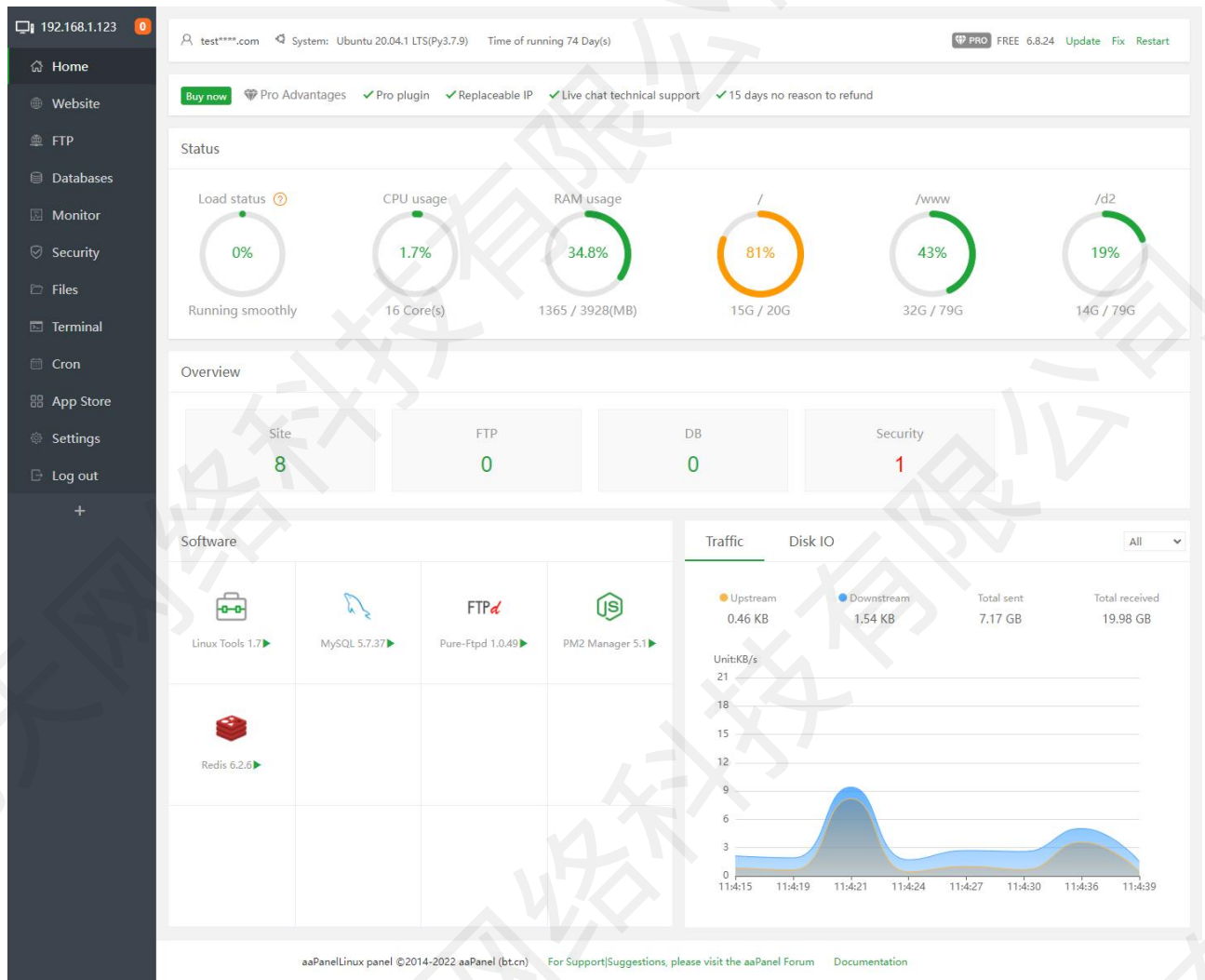
DefaultInformation

ConsoleUrl: http://ECS_Public_ip:7800/653a501b

username: v03vhs2z

password: f09c5ec8

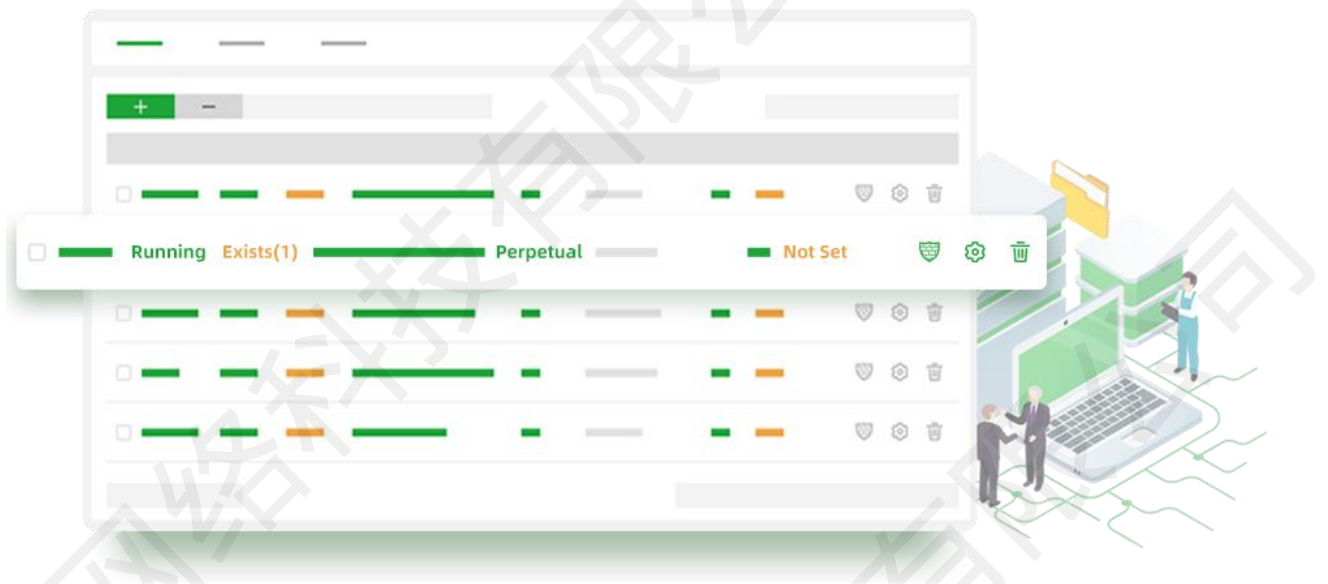
Note: The username and password of the aaPanel Linux Panel image is the same. After logging in, please change the password in time .



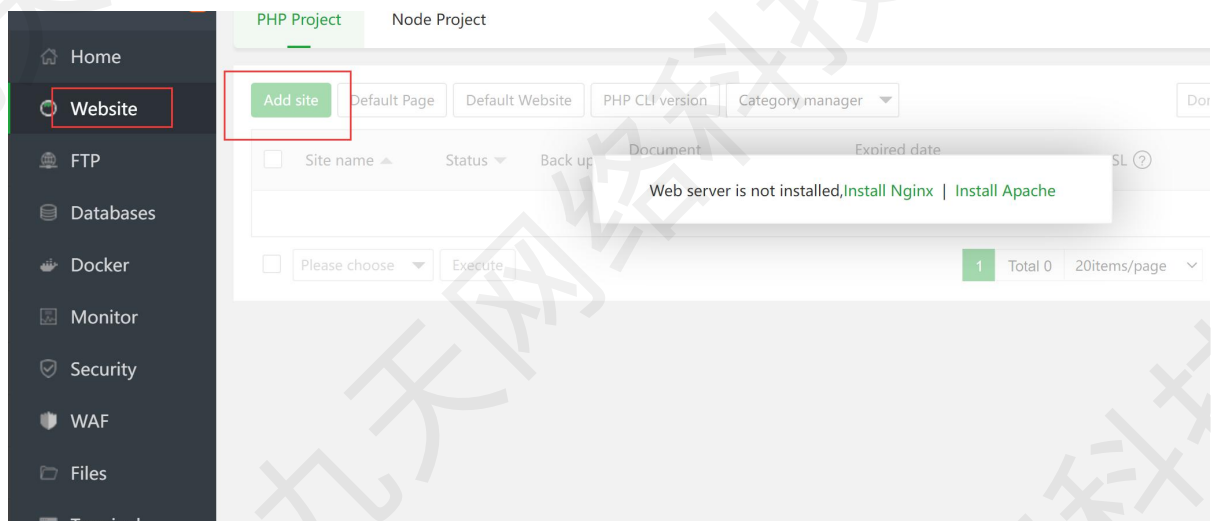
1、Create and manage web projects:

The panel provides convenient website management functions, such as domain name binding, application and deployment of SSL certificates, change of

website configuration,

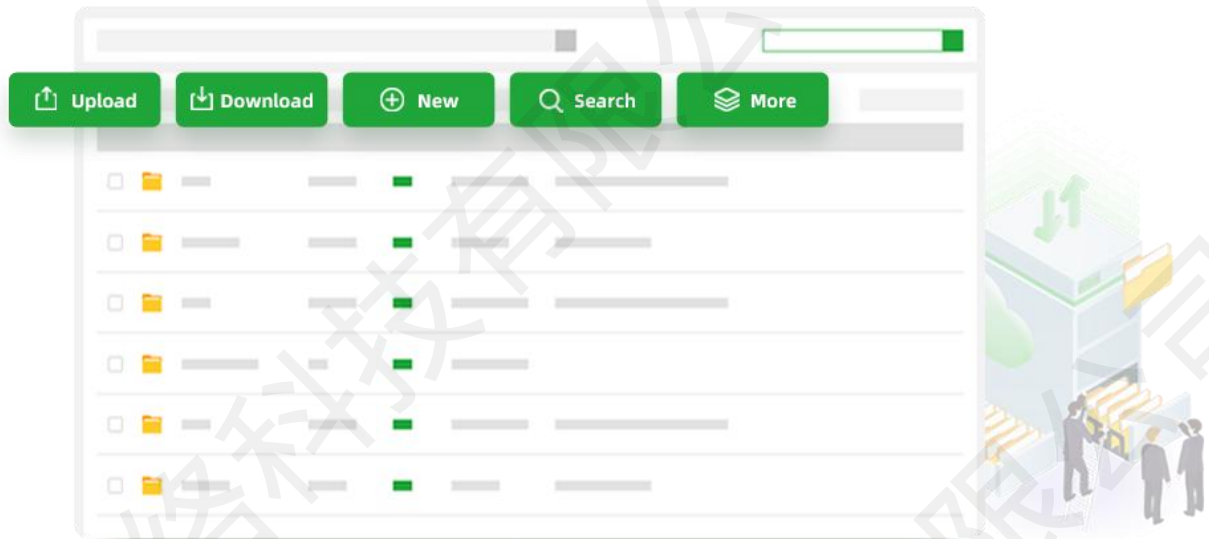


2、Create Site:



3、Familiar file management system:

A convenient and efficient file manager that supports uploading, downloading, packaging, decompression and other operations, and can write code online.



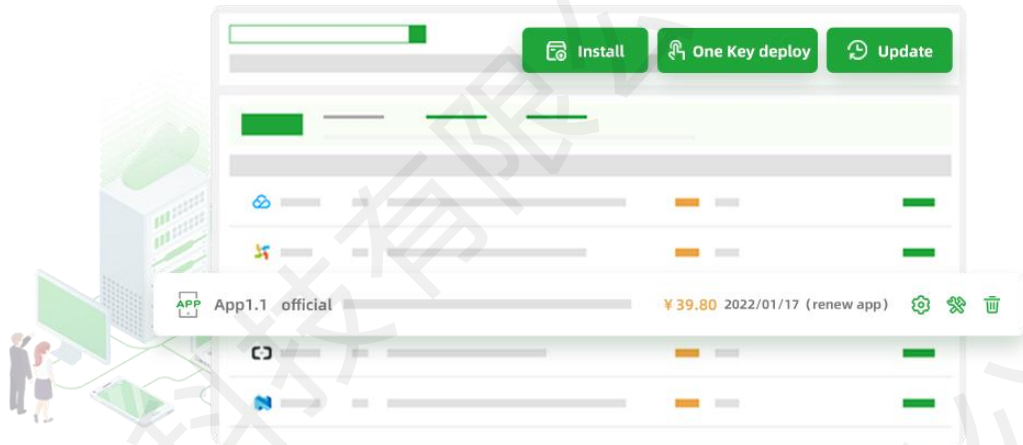
4、Preview of server resources usage:

CPU, memory, disk I/O, network I/O data monitoring, record keeping days can be set and data of a certain day can be viewed



5、One-click software installation:

Through the web interface, you can easily manage the server software used for installation, as well as rich extension applications



6、Cron Job:

Scheduled tasks can be added and executed periodically, support SHELL script, and provide website, database backup and log cutting

- Home
- Website
- FTP
- Databases
- Docker
- Monitor
- Security
- WAF
- Files
- Terminal
- Cron**
- App Store
- Settings

Dashboard / Cron Job

Add Cron Job

Type of Task Shell Script * Type of task: shell script, backup site, backup database, cut log, free RAM, access URL

Name of Task

Execution cycle Weekly Monday 1 Hour 30 Minute

Script content

Add Task

- When adding a backup task, you should run it manually and check if the backup package is complete
- Insufficient disk space, database password error, network instability, etc. may result in incomplete data backup
- Support file or directory exclusion when backing up sites and directories. Please upgrade the plug-ins that need to be excluded to the latest version

For more functions, please study by yourself. If you encounter problems, you can contact our online customer service. For pagoda use, you can post on the official forum for help

Service Description

Email: admin@yunjiutian.com on working days

Service time: 5 * 8 hours on working days

Provide purchase consultation, installation guidance, image reinstallation, and no free technical support for non image problems .



成都云九天网络科技有限公司 | www.yunjiutian.com